



THE CITY OF LAKE ELSINORE

Citywide Sidewalk Assessment and Repair Estimate



Presented to the City of Lake Elsinore
September 2020

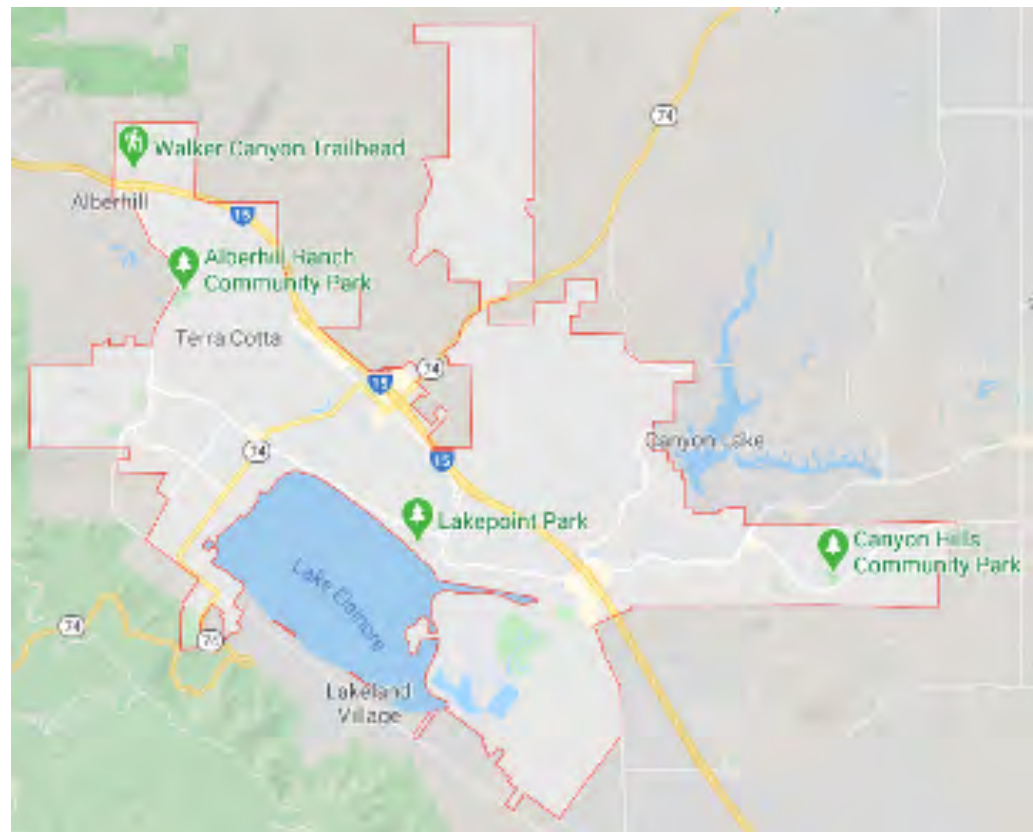


CITYWIDE SIDEWALK ASSESSMENT & REPAIR

PROJECT AREA

City of Lake Elsinore

The project includes the citywide inspection and repair of public sidewalks within the city limits of Lake Elsinore





SIDEWALK ASSESSMENT AND REPAIR PROGRAM

City of Lake Elsinore

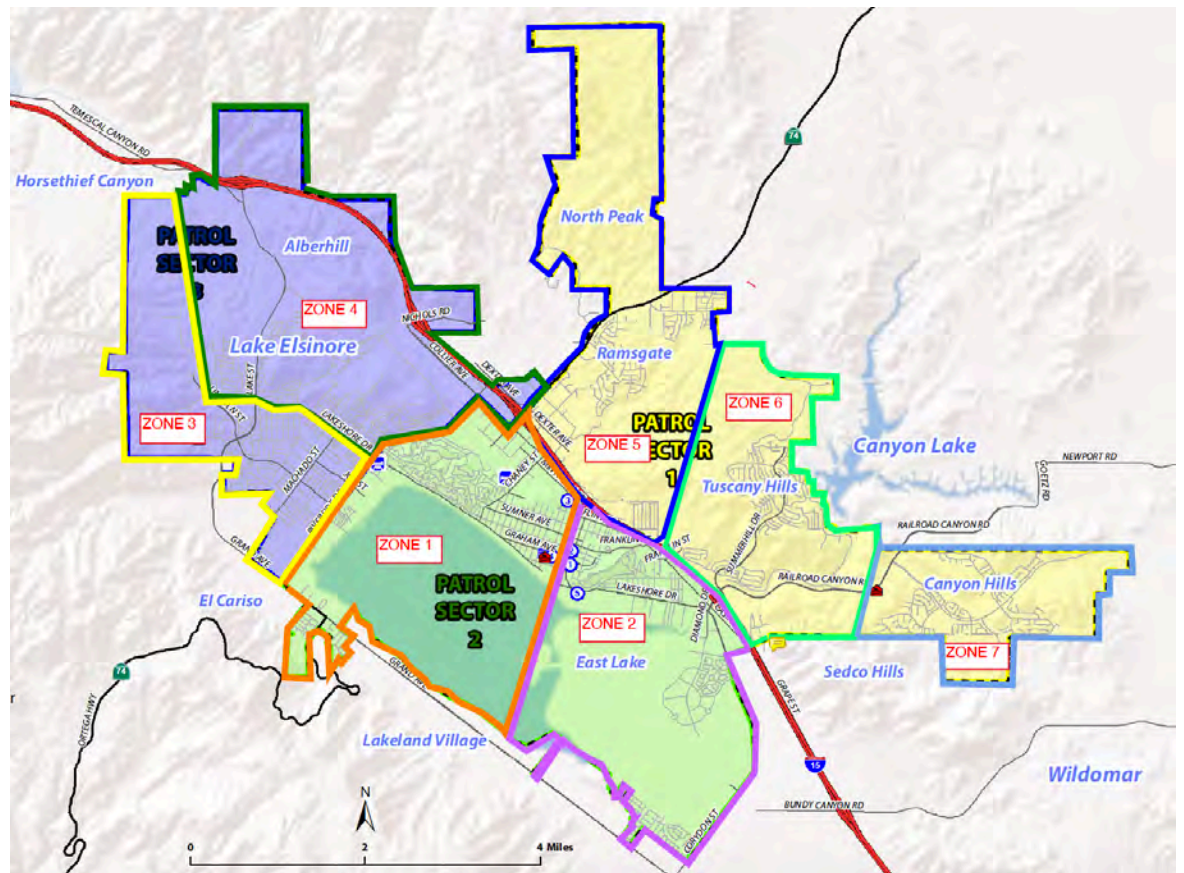
The City of Lake Elsinore Sidewalk Maintenance Program divides the city into 7 sidewalk maintenance zones to be inspected and repaired over a planned and recurring 5 year period.

The project includes the following:

- Citywide Sidewalk Assessment and Repair on a zone by zone basis
- Sidewalk Assessment of Canyon Hill Subdivision - Phase 3, 4, and 5
- Sidewalk Repair of Canyon Hill Subdivision over a 5 year period
- Sidewalk Repair of 8 Specified School Areas



- 7 Sidewalk Maintenance Zones
- Annual recurring inspection & repair
- 5 year cycle through the city





CITYWIDE SIDEWALK ASSESSMENT

City of Lake Elsinore

Citywide inspection of **395 miles** of public sidewalks within the city limits of Lake Elsinore.

49 miles of public sidewalks in the Canyon Hills Subdivision and 8 specified school zones were surveyed in 2019 - 2020. **346 miles** of public sidewalks remain to be surveyed.

CITY OF LAKE ELSINORE			
Streets & Sidewalk Miles	Centerline Miles	*Sidewalk Miles	Unique Sections
Arterials/Collector Segments	48.5	92.15	198
Local Street Network	159.3	302.67	1194
Alleys	0.5	0	6
Total	208.3	394.82	1398
Less Completed Sidewalk Survey Areas			
Canyon Hills Subdivision - Phase 1	7.5	15	44
8 School Zones	12	34	87
Revised Survey Total	188.8	345.82	1267

*Estimated Sidewalk Miles based on 90% of streets have sidewalks on both sides.



CITYWIDE SIDEWALK ASSESSMENT

Price Summary

Based on 346 estimated sidewalk miles and the preferential pricing associated with the CJPIA Master Services Agreement available to all members.

Lake Elsinore	Estimated Sidewalk Miles	Cost per Sidewalk Mile	Total Survey Cost
Citywide Sidewalk Survey (7 Zones)	346	\$386.00	133,556
Total	346		\$133,556



PROJECT AREA - CANYON HILL SUBDIVISION

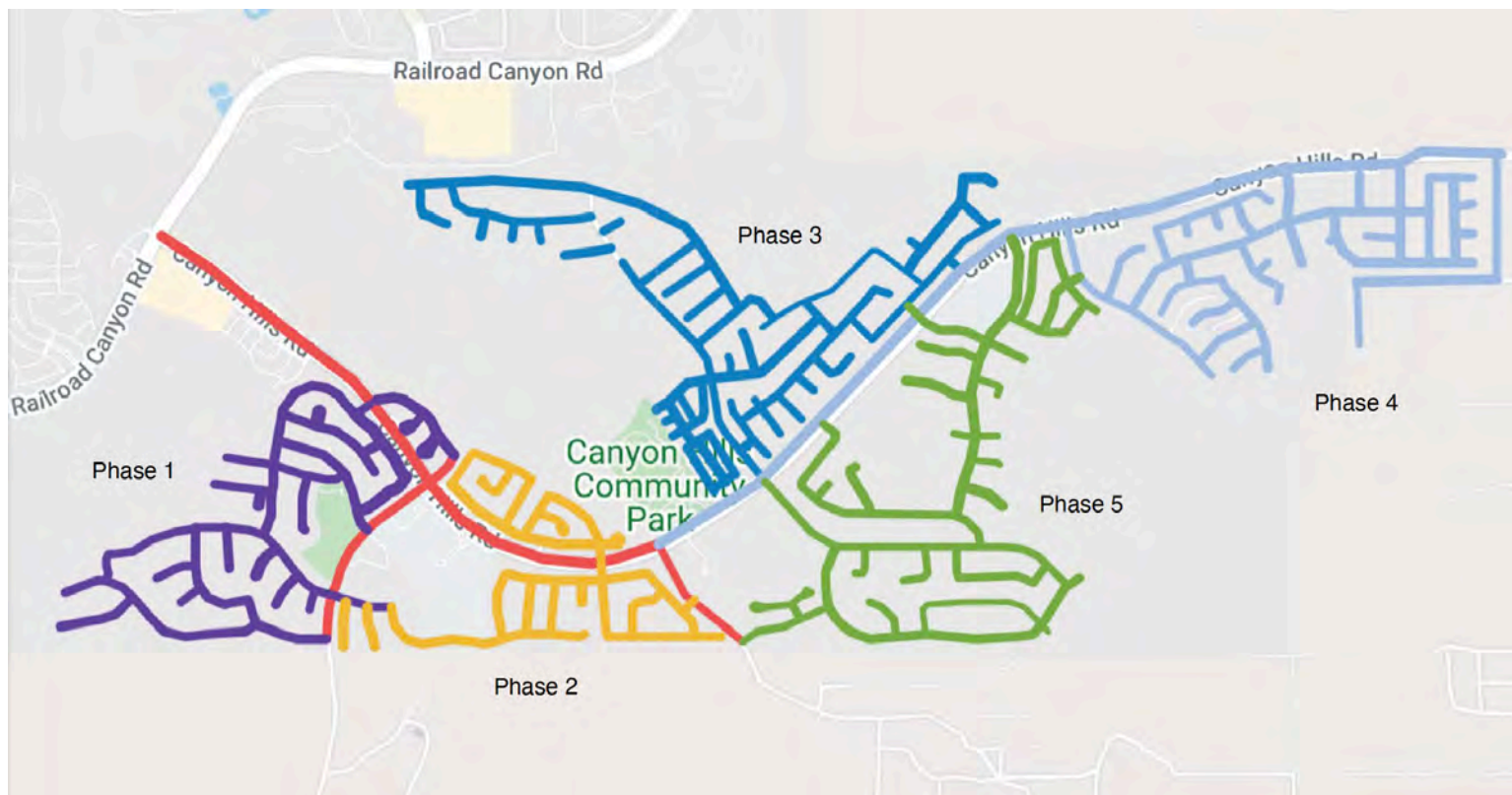
Canyon Hill Sidewalk Repair and Tree Survey





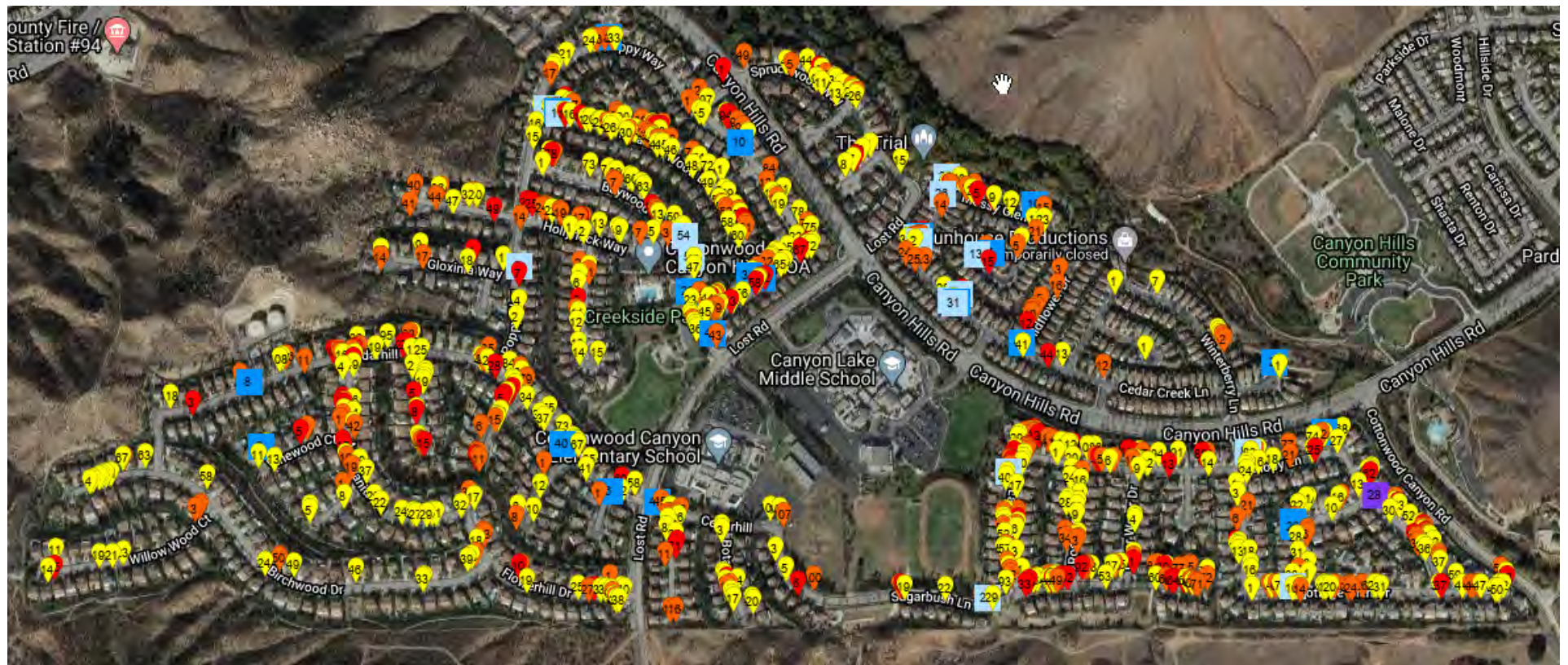
PROJECT AREA – CANYON HILL SUBDIVISION

Canyon Hill Sidewalk Repair project to be implemented annually in phases over a five year period together with city wide survey and repair





CANYON HILL PHASE 1 & 2 ASSESSMENT COMPLETED





CANYON HILL PHASE 1 & PHASE 2

ESTIMATED TOTAL PROJECT REPAIRS

TOTAL PROJECT REPAIRS*

Project Totals	Total Repair LOC	Total Tree LOC	Total Sq Feet	Saw Cut \$	Spall Fill \$	Est R&R/Tree \$	Total Project \$
Canyon Hill Subdivision	950	717	29,909.00	\$49,440.75	\$1,650.00	\$24,696.00	\$75,786.75

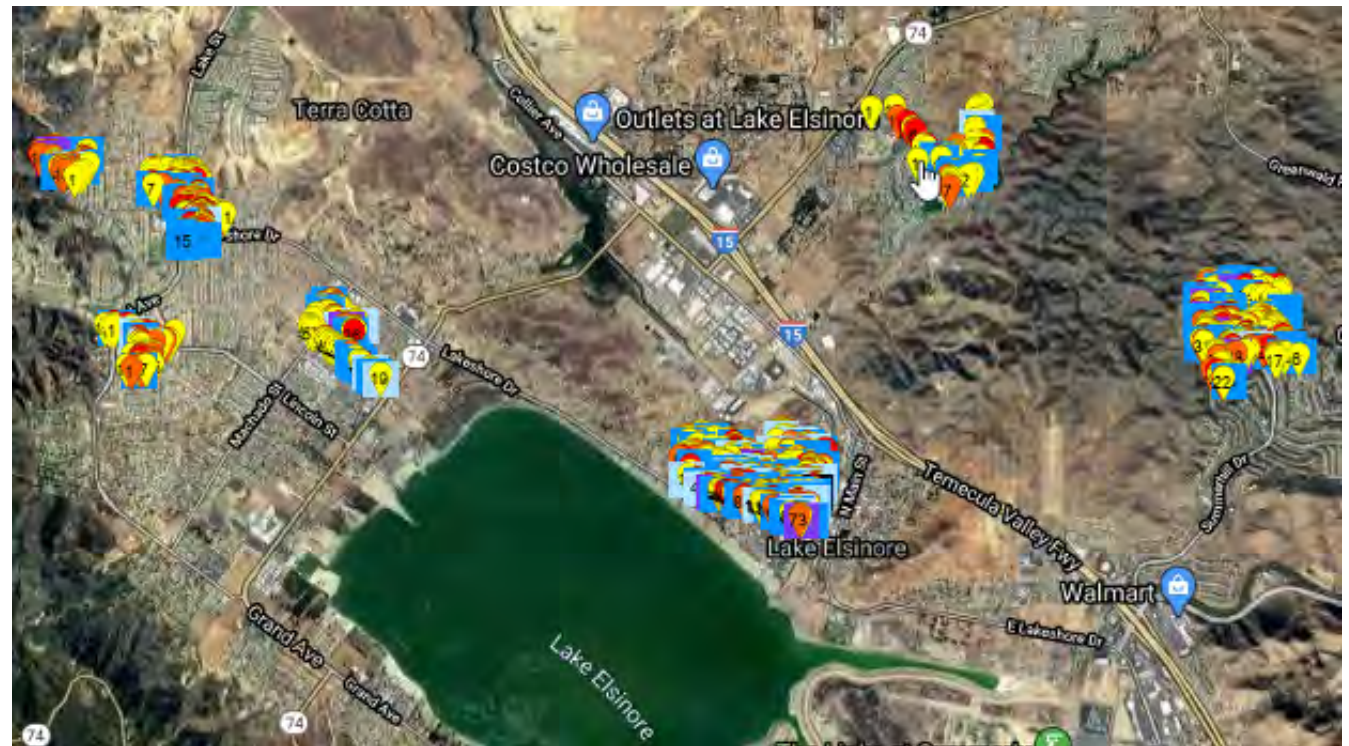
*Estimate only.

The information in this document is confidential, and is to be used only by the City of Lake Elsinore, and Precision Concrete Cutting in evaluating the project.



PROJECT AREA - 8 SPECIFIED SCHOOL AREAS

Sidewalk repair at 8 specified school areas to be implemented annually together with citywide sidewalk inspection and sidewalk repair.





PROJECT AREA - 8 SPECIFIED SCHOOL AREAS

ESTIMATED TOTAL PROJECT REPAIRS

TOTAL PROJECT REPAIRS*

Project Totals		Total LOC	Total Sq Feet		Saw Cut \$	Spall Fill \$	Est R&R \$		Total Project \$
8 School Zones		1831	62,346.00		\$69,744.75	\$11,475.00	\$31,410.00		\$112,629.75

*Estimate only. Spall patch, Remove and Replacement not included in the scope

The information in this document is confidential, and is to be used only by the City of Lake Elsinore, and Precision Concrete Cutting in evaluating the project.



CITYWIDE SIDEWALK ASSESSMENT AND REPAIR

ESTIMATE FOR ANNUAL SIDEWALK ASSESSMENT AND REPAIR

ASSUMPTIONS

- 5 Year Citywide Program recurring every 5 years
- Annual Assessment and Repair
- 395 Estimated Sidewalk Miles
- 7 Sidewalk Maintenance Zones
- 50 Sidewalk Miles average per Maintenance Zone
- Repair of uneven sidewalks ½" high to 2" high
- CJPAL Master Services Agreement Cost per Location
- \$4059 Average Repair Cost per Sidewalk mile
- Includes Precision Saw Cutting, patching and Removal and Replacement



CITYWIDE SIDEWALK SURVEY AND REPAIR

ESTIMATE FOR SIDEWALK ASSESSMENT AND REPAIR

SIDEWALK MAINTENANCE ZONES (1-7)

Annual SW Program Cost Summary	Year 1	Year 2	Year 3	Year 4	Year 5	Total
Citywide Sidewalk Assessment	26,711	26,711	26,711	26,711	26,712	\$133,556
Citywide Sidewalk Repair by SW Zone	60,770	197,391	173,481	169,016	179,366	\$780,024
Canyon Hill Sidewalk Repair by Phase	49,889	25,898	49,808	54,273	43,922	\$223,790
8 School Zone Sidewalk Repair	112,630					\$112,630
Totals	\$250,000	\$250,000	\$250,000	\$250,000	\$250,000	\$1,250,000

Estimate only. Some Demolition and Replacement Cost included in this estimate.