

PETITION TO THE CITY COUNCIL OF THE CITY OF LAKE
ELSINORE REQUESTING INSTITUTION OF PROCEEDINGS
TO ANNEX CERTAIN PROPERTY TO COMMUNITY FACILITIES
DISTRICT NO. 2015-1 (SAFETY SERVICES) OF THE CITY OF
LAKE ELSINORE

1. The undersigned (the "Owner") is the owner of more than 10% of the land depicted in Exhibit A hereto and described in Exhibit B hereto (the "Property"), which Owner desires to be annexed to Community Facilities District No. 2015-1 (Safety Services) of the City of Lake Elsinore (the "District"). The Property is located within the City of Lake Elsinore (the "City") in the County of Riverside.

2. The Owner requests that the City Council of the City (the "City Council") institute proceedings to annex the Property to the District pursuant to Chapter 2.5 (commencing with Section 53311), Part 1, Division 2, Title 5, of the Government Code of the State of California, commonly known as the "Mello-Roos Community Facilities Act of 1982" (the "Act").

3. The boundaries of the territory which is proposed for annexation to the District are those depicted in Exhibit A hereto and described in Exhibit B hereto.

4. The Owner requests that, upon annexation to the District, the District provide certain services within the Property (the "Services") including police protection services (including but not limited to criminal justice services), fire protection and suppression services, and paramedic services as further described in Resolution No. 2016-035 adopted by the City Council on April 12, 2016.

5. The Owner further requests that upon the approval at a special election to be held within the Property, the City Council, as legislative body of the District, annually levy Special Tax (as defined in the Rate and Method of Apportionment for the District (the "Rate and Method")) for the Services on the Property in accordance with the Rate and Method.

6. The Owner further requests upon the annexation of the Property to the District and the approval of the Special Tax at the election described in paragraph 5 above, the City record a notice of cancellation of special tax lien on the Property currently imposed by City of Lake Elsinore Community Facilities District No. 2003-1 (Law Enforcement, Fire and Paramedic Services).

7. This Petition may be executed in any number of counterparts, each of which shall be deemed to be an original, but all together shall constitute but one and the same Petition.

Dated: May __, 2020

THE DONALD S. CLURMAN SEPARATE
PROPERTY TRUST

By: _____
Don Clurman, Trustee

THREE STRANDS PROPERTIES, LLC,
a California limited liability company

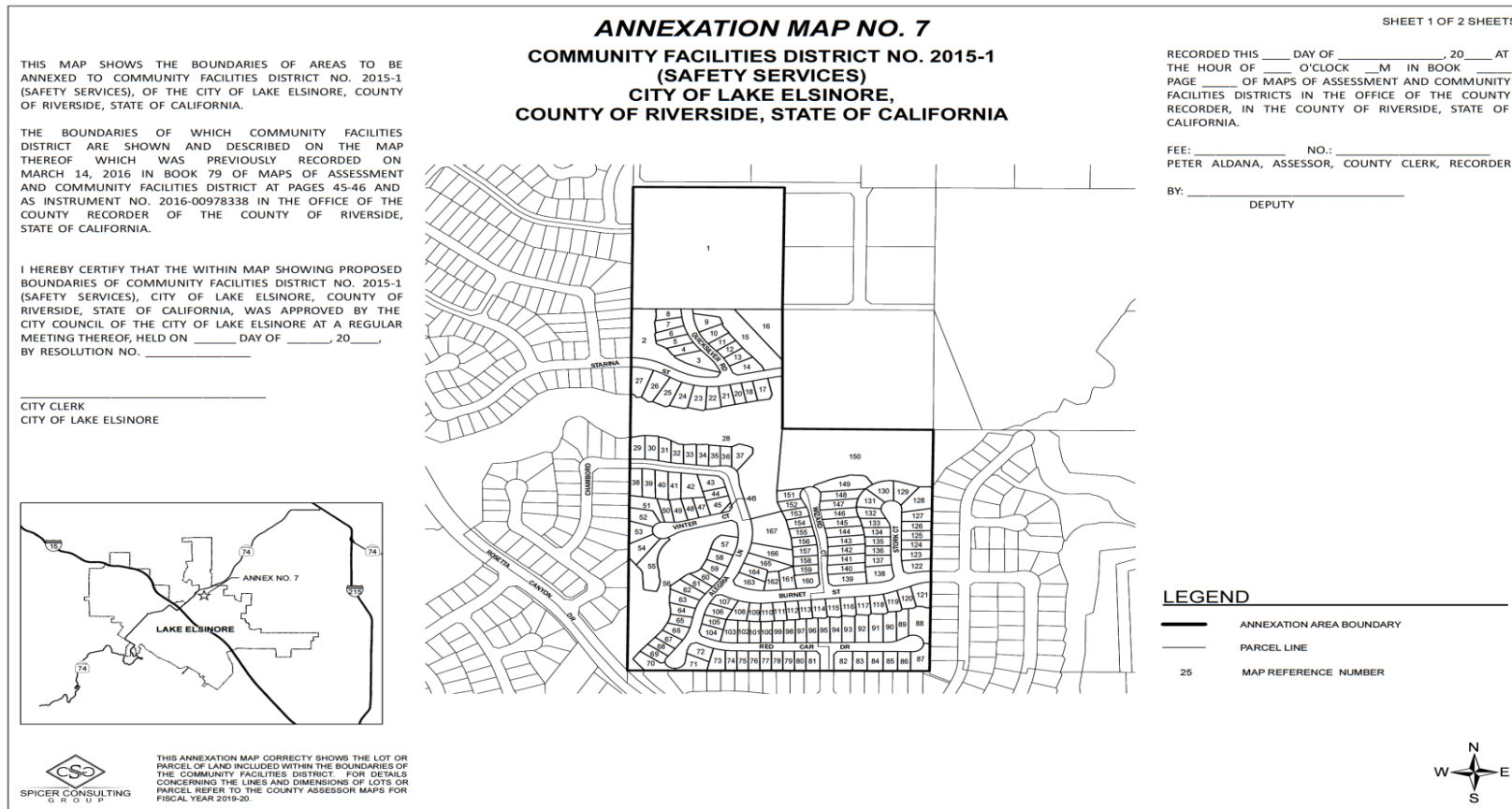
By: _____
Name: _____
Title: _____

SPECTRUM COMMUNITIES, LLC,
a California limited liability company

By: _____
Name: _____
Title: _____

EXHIBIT A

ANNEXATION BOUNDARY MAP



ANNEXATION MAP NO. 7
COMMUNITY FACILITIES DISTRICT NO. 2015-1
(SAFETY SERVICES)
CITY OF LAKE ELSINORE,
COUNTY OF RIVERSIDE, STATE OF CALIFORNIA

REFERENCE NO.	APN	REFERENCE NO.	APN	REFERENCE NO.	APN	REFERENCE NO.	APN
1	347-110-021	49	347-560-022	96	347-561-001	143	347-571-022
2	347-580-007	50	347-560-023	97	347-561-002	144	347-571-023
3	347-580-001	51	347-560-024	98	347-561-003	145	347-571-024
4	347-580-002	52	347-560-025	99	347-561-004	146	347-571-025
5	347-580-003	53	347-560-026	100	347-561-005	147	347-571-026
6	347-580-004	54	347-560-027	101	347-561-006	148	347-571-027
7	347-580-005	55	347-560-028	102	347-561-007	149	347-571-028
8	347-580-006	56	347-560-044	103	347-561-008	150	347-571-029
9	347-581-001	57	347-560-029	104	347-561-009	151	347-562-001
10	347-581-002	58	347-560-030	105	347-561-010	152	347-562-002
11	347-581-003	59	347-560-031	106	347-561-011	153	347-562-003
12	347-581-004	60	347-560-032	107	347-561-012	154	347-562-004
13	347-581-005	61	347-560-033	108	347-561-013	155	347-562-005
14	347-581-006	62	347-560-034	109	347-561-014	156	347-562-006
15	347-581-007	63	347-560-035	110	347-561-015	157	347-562-007
16	347-581-008	64	347-560-036	111	347-561-016	158	347-562-008
17	347-582-001	65	347-560-037	112	347-561-017	159	347-562-009
18	347-582-002	66	347-560-038	113	347-561-018	160	347-562-010
20	347-582-003	67	347-560-039	114	347-570-015	161	347-562-011
21	347-582-004	68	347-560-040	115	347-570-016	162	347-562-012
22	347-582-005	69	347-560-041	116	347-570-017	163	347-562-013
23	347-582-006	70	347-560-042	117	347-570-018	164	347-562-014
24	347-582-007	71	347-560-001	118	347-570-019	165	347-562-015
25	347-582-008	72	347-560-002	119	347-570-020	166	347-562-016
26	347-582-009	73	347-560-003	120	347-570-021	167	347-562-017
27	347-582-010	74	347-560-004	121	347-570-022		
28	347-582-023	75	347-560-005	122	347-571-001		
29	347-582-019	76	347-560-006	123	347-571-002		
30	347-582-018	77	347-560-007	124	347-571-003		
31	347-582-017	78	347-560-008	125	347-571-004		
32	347-582-016	79	347-560-009	126	347-571-005		
33	347-582-015	80	347-560-010	127	347-571-006		
34	347-582-014	81	347-560-011	128	347-571-007		
35	347-582-013	82	347-570-001	129	347-571-008		
36	347-582-012	83	347-570-002	130	347-571-009		
37	347-582-021	84	347-570-003	131	347-571-010		
38	347-560-012	85	347-570-004	132	347-571-011		
39	347-560-013	86	347-570-005	133	347-571-012		
40	347-560-014	87	347-570-006	134	347-571-013		
41	347-560-015	88	347-570-007	135	347-571-014		
42	347-560-016	89	347-570-008	136	347-571-015		
43	347-560-017	90	347-570-009	137	347-571-016		
44	347-560-018	91	347-570-010	138	347-571-017		
45	347-560-019	92	347-570-011	139	347-571-018		
46	347-560-043	93	347-570-012	140	347-571-019		
47	347-560-020	94	347-570-013	141	347-571-020		
48	347-560-021	95	347-570-014	142	347-571-021		

EXHIBIT B

LEGAL DESCRIPTION

LOTS 1 THROUGH 158, INCLUSIVE AND LETTERED LOTS K THROUGH P, INCLUSIVE, AS SHOWN ON THE MAP ENTITLED TRACT NO. 30698 FILED OCTOBER 19, 2006 IN BOOK 411 OF TRACT MAPS, AT PAGES 42-50, AMENDED BY CERTIFICATE OF CORRECTION RECORDED NOVEMBER 18, 2015 AS INSTRUMENT NO. 2015-0506634 IN THE CITY OF LAKE ELSINORE, COUNTY OF RIVERSIDE, STATE OF CALIFORNIA COUNTY OF RECORDS.

AND

THE NORTHWEST ONE-QUARTER OF THE NORTHWEST ONE-QUARTER OF THE SOUTHEAST ONE-QUARTER OF SECTION 29, TOWNSHIP 5 SOUTH, RANGE 4 WEST, SAN BERNARDINO MERIDIAN, IN THE CITY OF LAKE ELSINORE, COUNTY OF RIVERSIDE, STATE OF CALIFORNIA, ACCORDING TO THE OFFICIAL PLAT THEREOF.

AND

LOT P OF TRACT NO. 30698, IN THE CITY OF LAKE ELSINORE, COUNTY OF RIVERSIDE, STATE OF CALIFORNIA, FILED IN BOOK 411, OF MAPS, PAGES 42 THROUGH 50, INCLUSIVE, IN THE OFFICE OF THE COUNTY RECORDER OF SAID COUNTY.