

- INSTALL (1) (N) 60'-0" MONOEUCALYPTUS TREE
- INSTALL (12) (N) PANEL ANTENNAS ON A (N) 60'-0" MONOEUCALYPTUS
- INSTALL (1) (N) MICROWAVE DISH ANTENNA ON A (N) 60'-0" MONOEUCALYPTUS
- INSTALL (6) (N) RADIO UNITS ON A (N) 60'-0" MONOEUCALYPTUS
- INSTALL (1) (N) 12'-0" x 24'-0" x 8'-0" HIGH CMU EQUIPMENT ENCLOSURE
- INSTALL (2) (N) 6102 EQUIPMENT CABINETS ON (N) RAISED STEEL PLATFORM INSIDE (N) CMU ENCLOSURE
- INSTALL (3) (N) 'HCS' HYBRID CABLES FROM (N) EQUIPMENT CABINET TO (N) RADIO UNITS
- INSTALL (N) POWER & TELCO CABINETS
- INSTALL (N) 200 AMP DEDICATED ELECTRICAL SERVICE TO (1) (N) 200 AMP METER PEDESTAL
- INSTALL (N) TELCO / FIBER SERVICE AND (N) POWER SERVICE TO (N) EQUIPMENT ENCLOSURE

1. THIS WIRELESS TELECOMMUNICATIONS FACILITY WILL MEET THE HEALTH AND SAFETY STANDARDS FOR ELECTROMAGNETIC FIELD EMISSIONS AS ESTABLISHED BY THE FEDERAL COMMUNICATIONS COMMISSION OR ANY SUCCESSOR THEREOF, AND ANY OTHER FEDERAL OR STATE AGENCY.
2. THIS WIRELESS TELECOMMUNICATIONS FACILITY WILL MEET THE REGULATIONS OF THE FEDERAL COMMUNICATIONS COMMISSION REGARDING PHYSICAL AND ELECTROMAGNETIC INTERFERENCE.
3. LIGHTING OR SIGNS WILL BE PROVIDED ONLY AS REQUIRED BY FEDERAL OR STATE AGENCIES

RADIATION FROM THIS FACILITY WILL NOT INTERFERE WITH THE OPERATION OF OTHER COMMUNICATION DEVICES

LATITUDE: 33° 37' 29.38" (33.624828) NORTH (NAD83)
 LONGITUDE: -117° 18' 12.63" (-117.303508) WEST (NAD83)
 ELEVATION AT GRADE: 1262.75' A.M.S.L. (NAVD88)

THE GENERAL CONTRACTOR SHALL VERIFY ALL EXISTING CONDITIONS AND DIMENSIONS MATCH THE DRAWINGS AND SHALL IMMEDIATELY NOTIFY THE ARCHITECT IN WRITING OF ANY DISCREPANCIES. PROCEEDING WITH CONSTRUCTION WITHOUT SUCH NOTIFICATION OF DISCREPANCIES INDICATES THE GENERAL CONTRACTOR ACCEPTS RESPONSIBILITY FOR THE EXISTING CONDITIONS AND HAS INCLUDED RESOLUTION OF THOSE DISCREPANCIES IN HIS OR HER BID FOR CONSTRUCTION.

NOTE: THERE ARE NO (E) TELECOMMUNICATIONS FACILITIES ON THIS PROPERTY.

IN THE EVENT OF A CONFLICT, THE MORE RESTRICTIVE CODE SHALL GOVERN.

LEGAL DESCRIPTION:
LOT 17 IN BLOCK "E", IN THE CITY OF LAKE
ELSINORE, COUNTY OF RIVERSIDE, STATE
OF CALIFORNIA, AS SHOWN BY MAP
SHOWING SUBDIVISION OF BLOCK "D"
ELSINORE, AS SHOWN BY MAP ON FILE IN
BOOK 6, PAGE 296 OF MAPS, RECORDS OF
SAN DIEGO COUNTY, CALIFORNIA

ZONING DRAWINGS



32533 CORYDON ROAD
LAKE ELSINORE, CA 92530

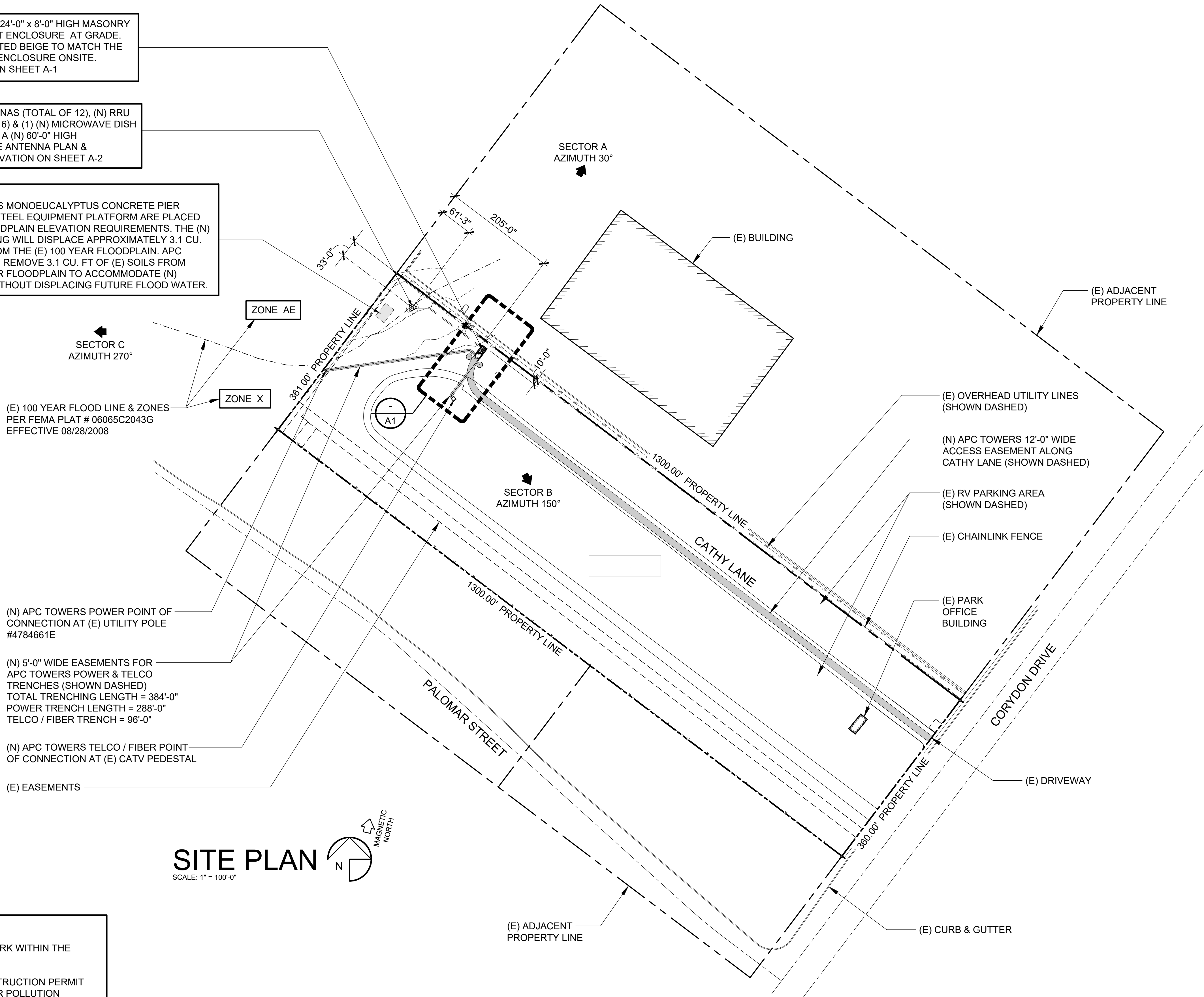
TITLE SHEET

T-1

(N) APC TOWERS 12'-0" x 24'-0" x 8'-0" HIGH MASONRY BLOCK WALL EQUIPMENT ENCLOSURE AT GRADE.
(N) WALL SHALL BE PAINTED BEIGE TO MATCH THE (E) EVMWD EQUIPMENT ENCLOSURE ONSITE.
SEE EQUIPMENT PLAN ON SHEET A-1

(N) APC TOWERS ANTENNAS (TOTAL OF 12), (N) RRU RADIO UNITS (TOTAL OF 6) & (1) (N) MICROWAVE DISH ANTENNA MOUNTED ON A (N) 60'-0" HIGH MONOEUCALYPTUS. SEE ANTENNA PLAN & MONOEUCALYPTUS ELEVATION ON SHEET A-2

FLOODPLAIN NOTE:
TOP OF (N) APC TOWERS MONOEUCALYPTUS CONCRETE PIER FOOTING & (N) RAISED STEEL EQUIPMENT PLATFORM ARE PLACED @ +1267.0' PER (E) FLOODPLAIN ELEVATION REQUIREMENTS. THE (N) CONCRETE PIER FOOTING WILL DISPLACE APPROXIMATELY 3.1 CU. YDS. (3.08 CU. YDS.) FROM THE (E) 100 YEAR FLOODPLAIN. APC TOWERS SHALL EVENLY REMOVE 3.1 CU. FT OF (E) SOILS FROM WITHIN THE (E) 100 YEAR FLOODPLAIN TO ACCOMMODATE (N) CONCRETE FOOTING WITHOUT DISPLACING FUTURE FLOOD WATER.



ENGINEERING NOTES:

- THIS PROJECT DOES NOT PROPOSE WORK WITHIN THE PUBLIC RIGHT-OF-WAY
- PRIOR TO THE ISSUANCE OF ANY CONSTRUCTION PERMIT THE PERMITTEE SHALL SUBMIT A WATER POLLUTION CONTROL PLAN (WPCP). THE WPCP SHALL BE PREPARED IN ACCORDANCE WITH THE GUIDELINES OF THE CITY OF LAKE ELSINORE STORM WATER STANDARDS.

ISSUE STATUS

REV.	DATE	DESCRIPTION	BY
1	12/11/18	90% ZD - REV. 1	JB
2	02/01/19	90% ZD - REV. 2	JB
3	03/13/19	90% ZD - REV. 3	JB
4	03/20/19	90% ZD - REV. 4	JB
5	04/18/19	100% ZD	JB
6	04/30/19	100% ZD - REV. 1	JB
7	05/22/19	100% ZD FINAL	JB
8	10/30/19	PLANNING COMMENTS	REW
9	11/08/19	WALL COLOR	REW

PLANCOM

TELECOMMUNICATIONS PROJECT MANAGEMENT

302 STATE PLACE,
ESCONDIDO, CALIFORNIA 92029

PROPRIETARY INFORMATION

THE INFORMATION CONTAINED IN THIS SET OF DRAWINGS
IS PROPRIETARY & CONFIDENTIAL TO APC TOWERS
ANY USE OR DISCLOSURE OTHER THAN AS IT RELATES
TO APC TOWERS IS STRICTLY PROHIBITED

APC Towers

8601 SIX FORKS ROAD, SUITE 250
RALEIGH, NC 27615
PHONE: (919) 324-1943

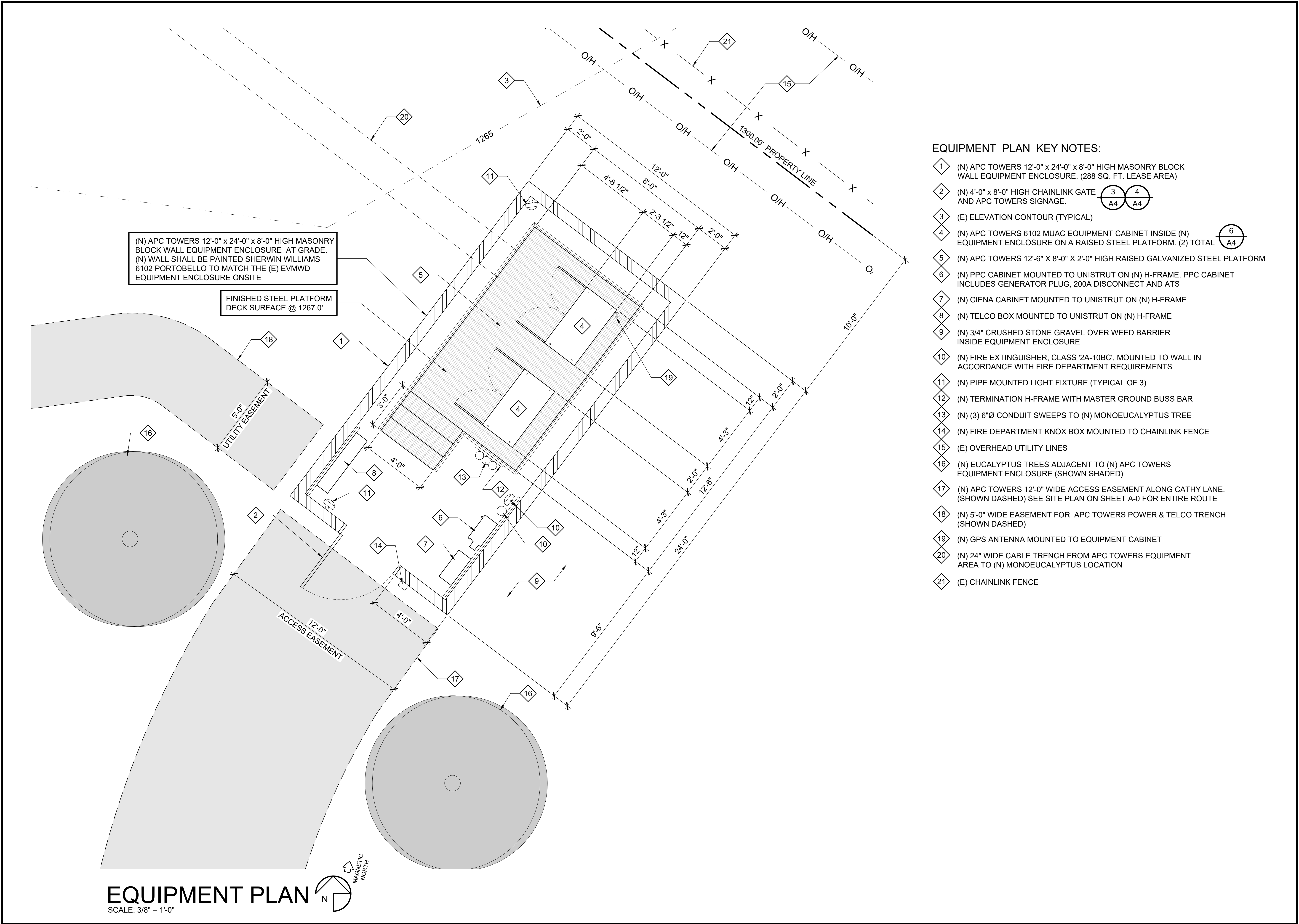
**AIRPARK LAKE
ELSINORE**

32533 CORYDON ROAD
LAKE ELSINORE, CA 92530

SHEET TITLE:

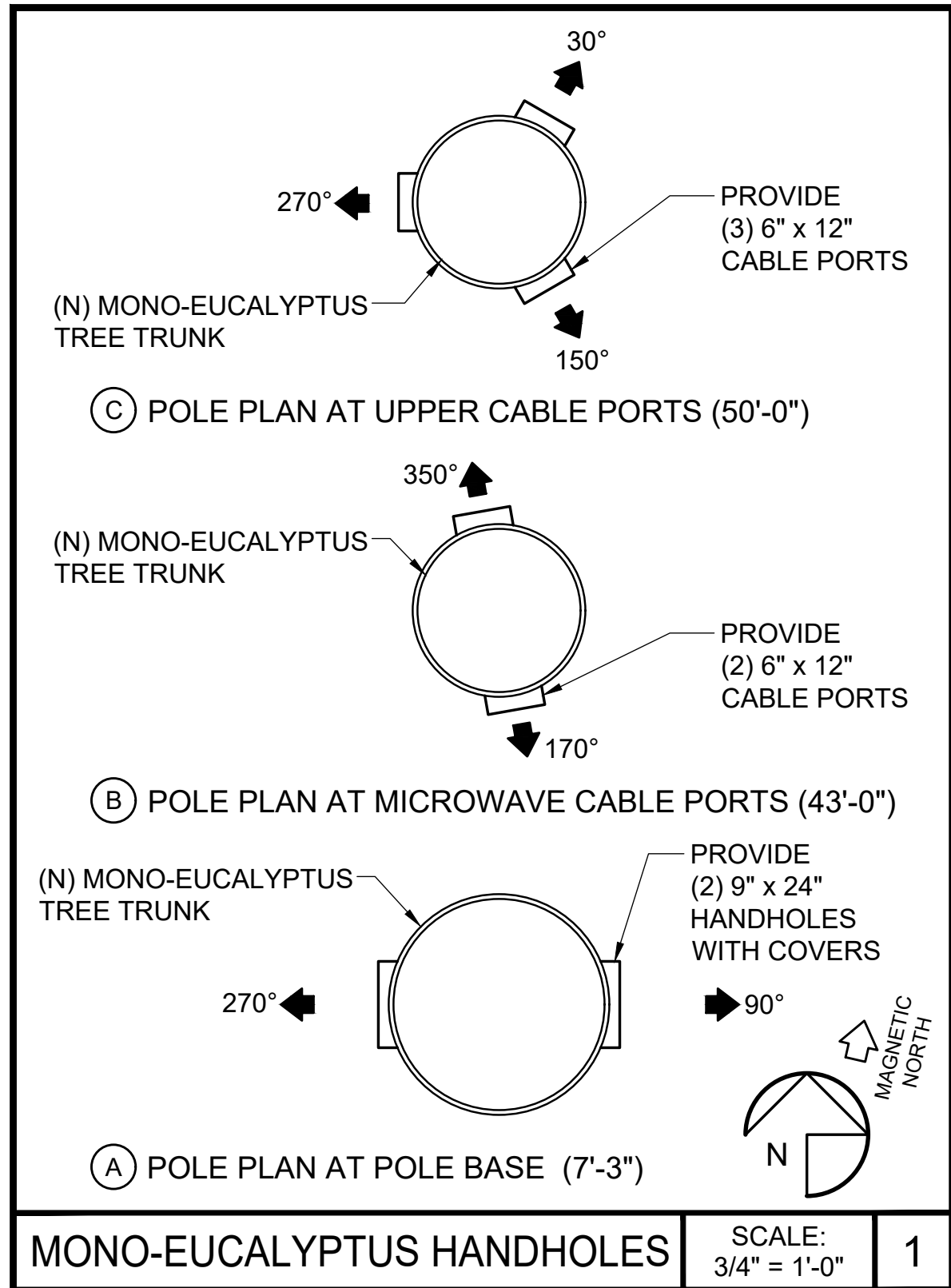
SITE PLAN

A-0



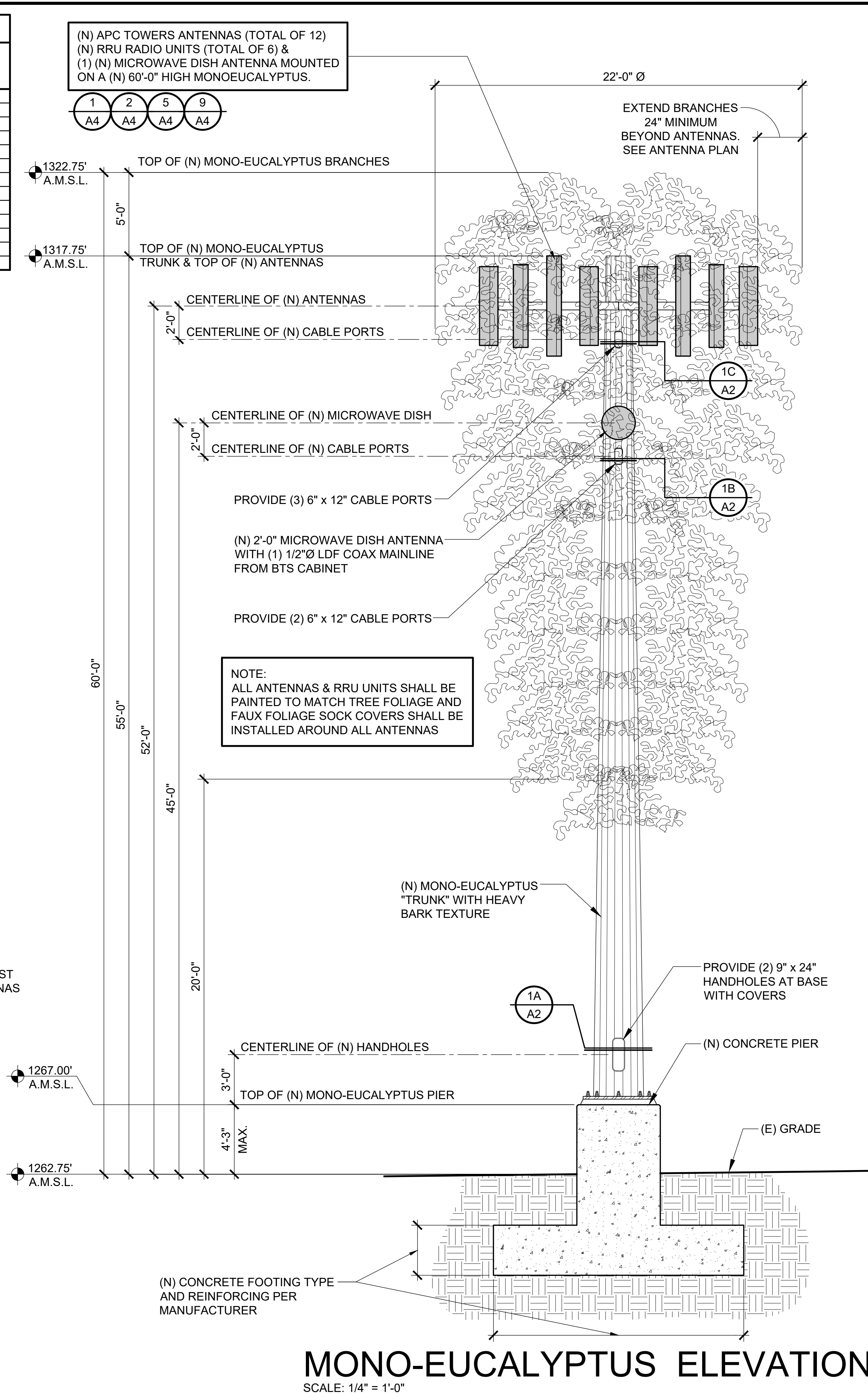
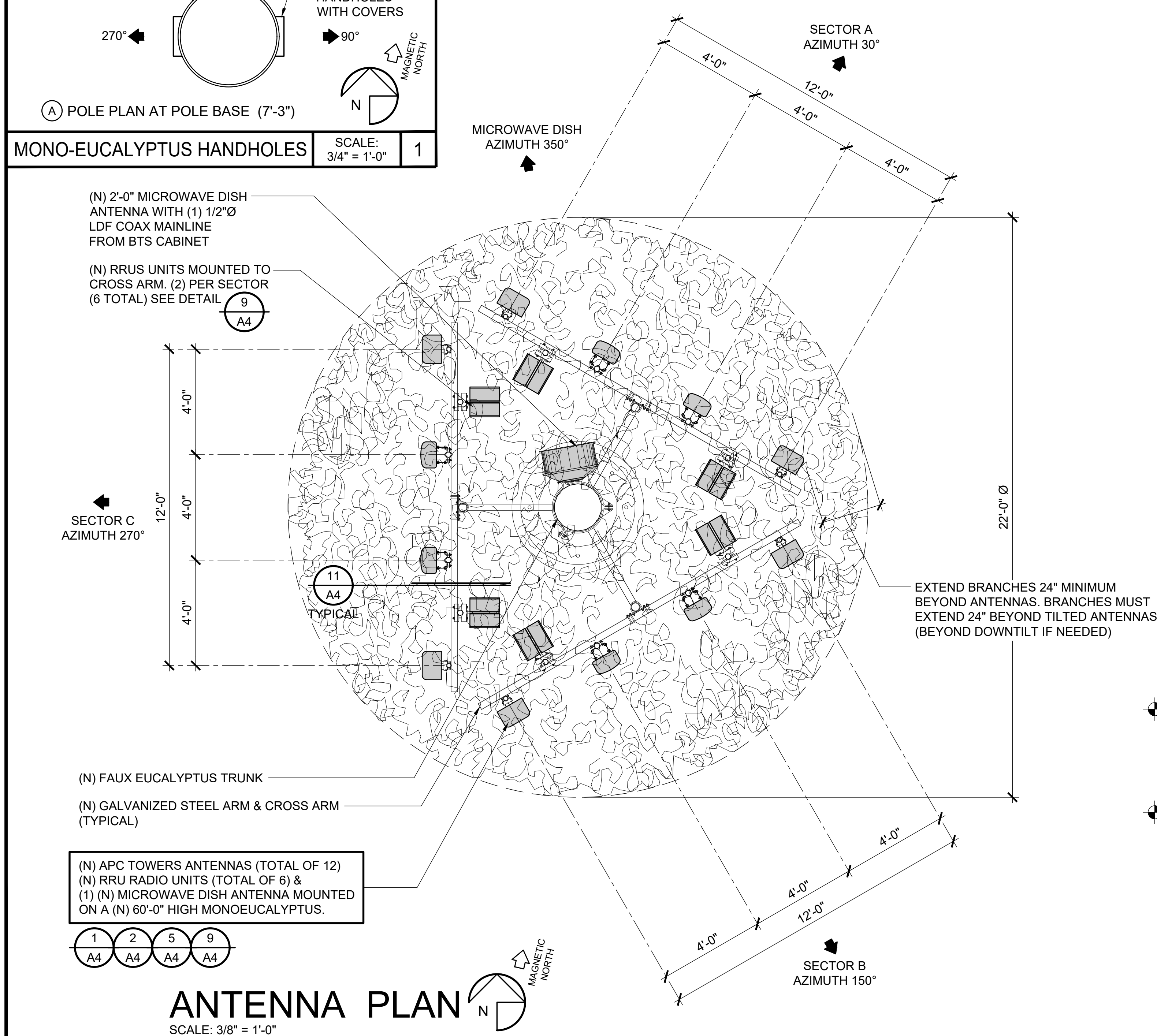
ISSUE STATUS			
REV.	DATE	DESCRIPTION	BY
1	12/11/18	90% ZD - REV. 1	JB
2	02/01/19	90% ZD - REV. 2	JB
3	03/13/19	90% ZD - REV. 3	JB
4	03/20/19	90% ZD - REV. 4	JB
5	04/18/19	100% ZD	JB
6	04/30/19	100% ZD - REV. 1	JB
7	05/22/19	100% ZD FINAL	JB
8	10/30/19	PLANNING COMMENTS	REW
9	11/08/19	WALL COLOR	REW

PLANCOM TELECOMMUNICATIONS PROJECT MANAGEMENT 302 STATE PLACE, ESCONDIDO, CALIFORNIA 92029
PROPRIETARY INFORMATION <small>THE INFORMATION CONTAINED IN THIS SET OF DRAWINGS IS PROPRIETARY & CONFIDENTIAL TO APC TOWERS ANY USE OR DISCLOSURE OTHER THAN AS IT RELATES TO APC TOWERS IS STRICTLY PROHIBITED</small>
APC Towers 8601 SIX FORKS ROAD, SUITE 250 RALEIGH, NC 27615 PHONE: (919) 324-1943
AIRPARK LAKE ELSINORE 32533 CORYDON ROAD LAKE ELSINORE, CA 92530
SHEET TITLE: EQUIPMENT PLAN
A-1



PROPOSED ANTENNA SCHEDULE						
ANTENNA NUMBER	ANTENNA MODEL	RAD CENTER	AZIMUTH	COAX / FIBER CABLE LENGTH	RADIO UNIT TYPE	ACTIVE TECHNOLOGY
A1	ERICSSON AIR3246 B66 (OCTO)	52'-0"	30°	70'-0"	NONE	L2100
A2	6' MB RFS - APXVAARR24_43-U-NA20 (OCTO)				RADIO 4449 B71+B12	L700
A3	4' MID-BAND ANDREW - HBXX-6516DS-A2M (QUAD)				RADIO 4415 B25	L1900/U1900
A4	ERICSSON AIR3246 B66 (OCTO)	52'-0"	150°	70'-0"	NONE	L2100
B1	ERICSSON AIR3246 B66 (OCTO)				NONE	L2100
B2	6' MB RFS - APXVAARR24_43-U-NA20 (OCTO)				RADIO 4449 B71+B12	L700
B3	4' MID-BAND ANDREW - HBXX-6516DS-A2M (QUAD)	52'-0"	270°	70'-0"	RADIO 4415 B25	L1900/U1900
B4	ERICSSON AIR3246 B66 (OCTO)				NONE	L2100
C1	ERICSSON AIR3246 B66 (OCTO)				NONE	L2100
C2	6' MB RFS - APXVAARR24_43-U-NA20 (OCTO)	45'-0"	350°	63'-0"	N/A	N/A
C3	4' MID-BAND ANDREW - HBXX-6516DS-A2M (QUAD)				N/A	N/A
C4	ERICSSON AIR3246 B66 (OCTO)				N/A	N/A
MICROWAVE						
T.B.D.						

- NOTES:
1. TYPICAL HYBRID CABLE (3) 6X12 HCS (1 PER SECTOR)
 2. TYPICAL FIBER JUMPER LENGTH, PER SECTOR:
(6) 16' FOR ERICSSON ANTENNAS
(2) 16' FOR RFS ANTENNAS
(2) 16' FOR ANDREW ANTENNAS
(4) COAXIAL JUMPERS FOR RFS ANTENNAS
(2) 16' FOR ANDREW ANTENNAS
(4) COAXIAL JUMPERS FOR ANDREW ANTENNAS
 3. COAXIAL CABLE LENGTH = 70'



ISSUE STATUS

REV.	DATE	DESCRIPTION	BY
1	12/11/18	90% ZD - REV. 1	JB
2	02/01/19	90% ZD - REV. 2	JB
3	03/13/19	90% ZD - REV. 3	JB
4	03/20/19	90% ZD - REV. 4	JB
5	04/18/19	100% ZD	JB
6	04/30/19	100% ZD - REV. 1	JB
7	05/22/19	100% ZD FINAL	JB
8	10/30/19	PLANNING COMMENTS	REW
9	11/08/19	WALL COLOR	REW

PLANCOM

TELECOMMUNICATIONS PROJECT MANAGEMENT

302 STATE PLACE,
ESCONDIDO, CALIFORNIA 92029

PROPRIETARY INFORMATION

THE INFORMATION CONTAINED IN THIS SET OF DRAWINGS IS PROPRIETARY & CONFIDENTIAL TO APC TOWERS. ANY USE OR DISCLOSURE OTHER THAN AS IT RELATES TO APC TOWERS IS STRICTLY PROHIBITED.

APC Towers

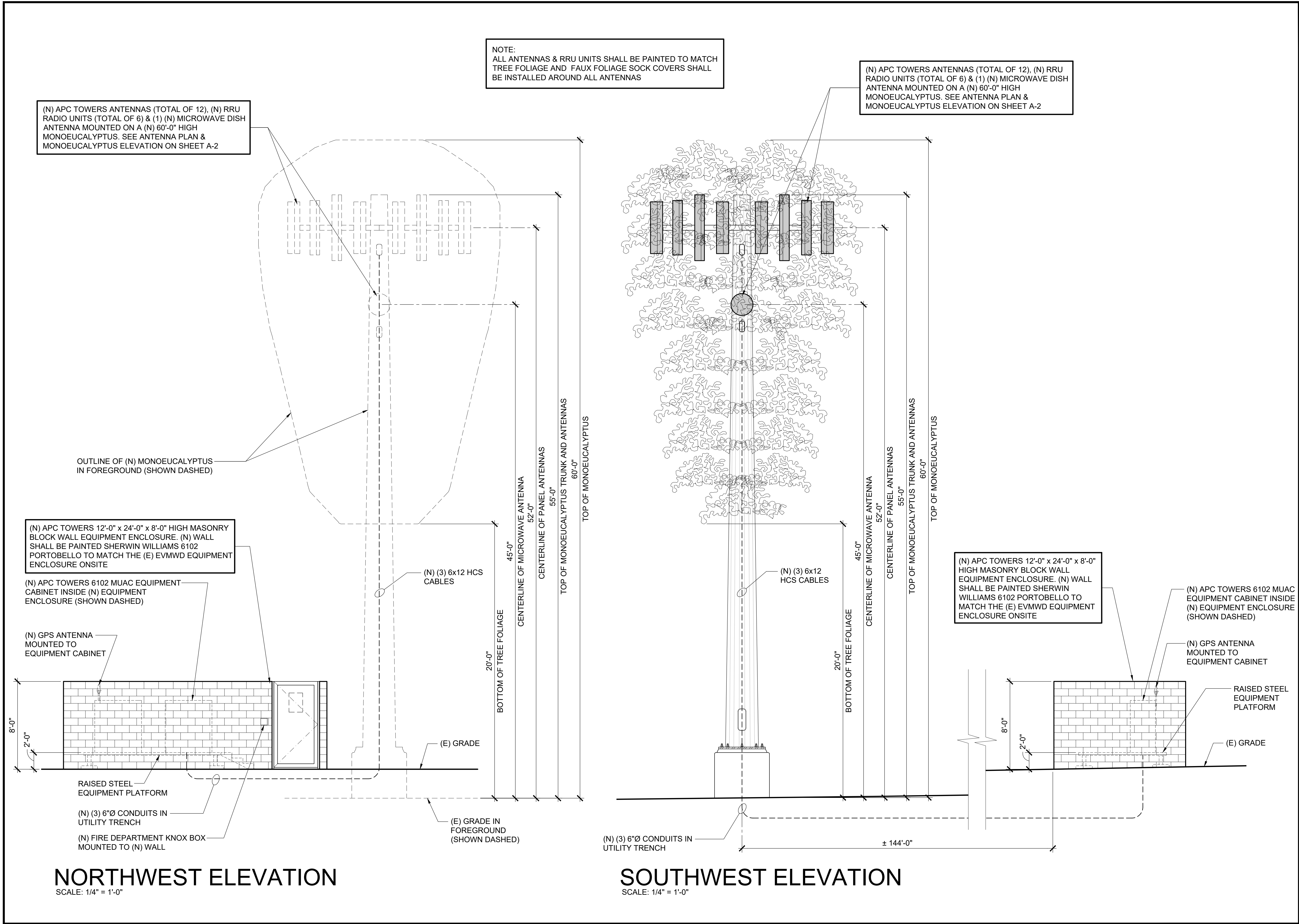
8601 SIX FORKS ROAD, SUITE 250
RALEIGH, NC 27615
PHONE: (919) 324-1943

**AIRPARK LAKE
ELSINORE**

32533 CORYDON ROAD
LAKE ELSINORE, CA 92530

SHEET TITLE:
ANTENNA PLAN &
MONO-EUCALYPTUS
ELEVATION

A-2



ISSUE STATUS			
REV.	DATE	DESCRIPTION	BY
1	12/11/18	90% ZD - REV. 1	JB
2	02/01/19	90% ZD - REV. 2	JB
3	03/13/19	90% ZD - REV. 3	JB
4	03/20/19	90% ZD - REV. 4	JB
5	04/18/19	100% ZD	JB
6	04/30/19	100% ZD - REV. 1	JB
7	05/22/19	100% ZD FINAL	JB
8	10/30/19	PLANNING COMMENTS	REW
9	11/08/19	WALL COLOR	REW

PLANCOM
TELECOMMUNICATIONS PROJECT MANAGEMENT

302 STATE PLACE,
ESCONDIDO, CALIFORNIA 92029

PROPRIETARY INFORMATION

THE INFORMATION CONTAINED IN THIS SET OF DRAWINGS IS PROPRIETARY & CONFIDENTIAL TO APC TOWERS

ANY USE OR DISCLOSURE OTHER THAN AS IT RELATES TO APC TOWERS IS STRICTLY PROHIBITED

APC Towers

8601 SIX FORKS ROAD, SUITE 250
RALEIGH, NC 27615
PHONE: (919) 324-1943

**AIRPARK LAKE
ELSINORE**

32533 CORYDON ROAD
LAKE ELSINORE, CA 92530

SHEET TITLE:
EXTERIOR ELEVATIONS

A-3

RFS: APXVAARR24_43-U-NA20			ERICSSON: AIR3246 B66									ISSUE STATUS																																										
<div>ANTENNA MATERIAL: GRP</div> <div>ANTENNA COLOR: LIGHT GREY</div> <div>DIMENSIONS, HxWxD: 72.0" x 12.6" x 6.3"</div> <div>WEIGHT: 76.0 lbs</div> <div>WIND LOAD: FRONTAL: 746.0 N @ 150 km/h LATERAL: 243.0 N @ 150 km/h REAR: 776.0 N @ 150 km/h</div> <div>RF CONNECTOR INTERFACE: 4.1-9.5 DIN FEMALE (8)</div> <div>RF CONNECTOR LOCATION: BOTTOM</div> <div><div><div></div><div></div><div></div></div><div>FRONT VIEW SIDE VIEW BOTTOM VIEW</div></div>			<div>ANTENNA MATERIAL: GRP</div> <div>ANTENNA COLOR: LIGHT GRAY</div> <div>DIMENSIONS, HxWxD: 56.6" x 12.9" x 8.7"</div> <div>WEIGHT: 105.8 lbs</div> <div>RF CONNECTOR INTERFACE: (2) 7-16 DIN FEMALE</div> <div>RF CONNECTOR LOCATION: BOTTOM</div> <div><div><div></div><div></div><div></div></div><div>BOTTOM VIEW FRONT VIEW SIDE VIEW</div></div>			<div><div><div></div><div></div><div></div></div><div>1'-6" 1'-4"</div><div>CAUTION BATTERY ROOM</div><div>BATTERY ELECTROLYTE SOLUTIONS ARE CORROSIVE LIQUIDS</div><div>THIS ROOM CONTAINS ENERGIZED BATTERY SYSTEMS AND ENERGIZED ELECTRICAL CIRCUITS</div><div>MOUNTING SCREWS</div><div>MICARTA SIGN RED BACKGROUND WITH WHITE LETTERS</div><div>1" HELVETICA LETTERING</div><div>1/2" HELVETICA LETTERING</div></div>			<div><div><div></div><div></div><div></div></div><div>4'-0" 14" SQUARE</div><div>RED (FLAMMABILITY)</div><div>YELLOW (REACTIVITY)</div><div>NUMBERS & LETTERS SHALL BE REFLECTIVE</div><div>BLUE (HEALTH HAZARD)</div><div>WHITE (SPECIAL)</div><div>FOR BATTERIES</div></div>			<table><tr><th>REV.</th><th>DATE</th><th>DESCRIPTION</th><th>BY</th></tr><tr><td>1</td><td>12/11/18</td><td>90% ZD - REV. 1</td><td>JB</td></tr><tr><td>2</td><td>02/01/19</td><td>90% ZD - REV. 2</td><td>JB</td></tr><tr><td>3</td><td>03/13/19</td><td>90% ZD - REV. 3</td><td>JB</td></tr><tr><td>4</td><td>03/20/19</td><td>90% ZD - REV. 4</td><td>JB</td></tr><tr><td>5</td><td>04/18/19</td><td>100% ZD</td><td>JB</td></tr><tr><td>6</td><td>04/30/19</td><td>100% ZD - REV. 1</td><td>JB</td></tr><tr><td>7</td><td>05/22/19</td><td>100% ZD FINAL</td><td>JB</td></tr><tr><td>8</td><td>10/30/19</td><td>PLANNING COMMENTS</td><td>REW</td></tr><tr><td>9</td><td>11/08/19</td><td>WALL COLOR</td><td>REW</td></tr></table> <div>PLANCOM TELECOMMUNICATIONS PROJECT MANAGEMENT</div> <div>302 STATE PLACE, ESCONDIDO, CALIFORNIA 92029</div> <div>PROPRIETARY INFORMATION</div> <div>THE INFORMATION CONTAINED IN THIS SET OF DRAWINGS IS PROPRIETARY & CONFIDENTIAL TO APC TOWERS</div> <div>ANY USE OR DISCLOSURE OTHER THAN AS IT RELATES TO APC TOWERS IS STRICTLY PROHIBITED</div> <div>APC Towers 8601 SIX FORKS ROAD, SUITE 250 RALEIGH, NC 27615 PHONE: (919) 324-1943</div>			REV.	DATE	DESCRIPTION	BY	1	12/11/18	90% ZD - REV. 1	JB	2	02/01/19	90% ZD - REV. 2	JB	3	03/13/19	90% ZD - REV. 3	JB	4	03/20/19	90% ZD - REV. 4	JB	5	04/18/19	100% ZD	JB	6	04/30/19	100% ZD - REV. 1	JB	7	05/22/19	100% ZD FINAL	JB	8	10/30/19	PLANNING COMMENTS	REW	9	11/08/19	WALL COLOR	REW
REV.	DATE	DESCRIPTION	BY																																																			
1	12/11/18	90% ZD - REV. 1	JB																																																			
2	02/01/19	90% ZD - REV. 2	JB																																																			
3	03/13/19	90% ZD - REV. 3	JB																																																			
4	03/20/19	90% ZD - REV. 4	JB																																																			
5	04/18/19	100% ZD	JB																																																			
6	04/30/19	100% ZD - REV. 1	JB																																																			
7	05/22/19	100% ZD FINAL	JB																																																			
8	10/30/19	PLANNING COMMENTS	REW																																																			
9	11/08/19	WALL COLOR	REW																																																			
ANTENNA SPECIFICATIONS			SCALE: N.T.S.	1	ANTENNA SPECIFICATIONS			SCALE: N.T.S.	2	BATTERY CAUTION SIGN			SCALE: N.T.S.	3	NFPA 704 PLACARD			SCALE: N.T.S.	4																																			
<div>ANDREW: HBXX-6516DS-A2M</div> <div>ANTENNA MATERIAL: PVC, UV RESISTANT</div> <div>ANTENNA COLOR: OFF WHITE</div> <div>DIMENSIONS, HxWxD: 51.1" x 12.0" x 6.5"</div> <div>WEIGHT: 30.6 lbs</div> <div>WIND LOAD: FRONTAL: 419.0 N @ 150 km/h LATERAL: 113.0 N @ 150 km/h WIND SPEED: 241 km/h / 150 mph</div> <div>RF CONNECTOR INTERFACE: 7/16 DIN FEMALE (4)</div> <div>RF CONNECTOR LOCATION: BOTTOM</div> <div><div><div></div><div></div><div></div></div><div>FRONT VIEW SIDE VIEW BOTTOM VIEW</div></div>			<div>RBS 6102:</div> <div>DIMENSIONS, HxWxD: (57"x51.1"x27.5")</div> <div>WEIGHT: 859 lbs</div> <div><div><div></div><div></div><div></div></div><div>27.5" 51.1" 57" 51.1" 21.5" 5"</div></div>			<div><div><div></div><div></div><div></div></div><div>15"± 5° DOWNTILT</div><div>(N) ANTENNA. SEE DETAILS</div><div>(N) 2"Ø SCHEDULE 40 GALVANIZED STANDARD (ASTM 53 GRADE B) STEEL ANTENNA PIPE MOUNT</div><div>PROPOSED ANTENNA MOUNTING BRACKET</div><div>PROPOSED 3/8" THICK STEEL PLATE & 1/2"Ø U-BOLTS</div><div>MONO-EUCALYPTUS ARM ASSEMBLY</div><div>PROPOSED RRUS UNIT MOUNTED TO ANTENNA PIPE. SEE DETAILS</div><div>PROPOSED COMMSCOPE ANTENNA BRACKET</div><div>COAXIAL CABLE JUMPER</div><div>PROPOSED FAUX FOLIAGE SOCK COVER AROUND ALL ANTENNAS</div><div>(2) RRUS PER SECTOR</div><div>ALL EXPOSED CABLES, BRACKETS & SUPPORTS SHALL BE PAINTED TO MATCH FAUX TREE FOLIAGE</div></div>			<div>NOT USED</div>			<div>NOT USED</div>																																										
ANTENNA SPECIFICATIONS			SCALE: N.T.S.	5	6102 EQUIPMENT CABINET			SCALE: N.T.S.	6	<div>ANTENNA & RRU MOUNTING</div> <div>SCALE: N.T.S.</div>			11	NOT USED			12																																					
<div>RADIO 4449-B13+B5</div> <div>4TX 4RX PER BAND</div> <div>8 ANTENNA PORTS, 4TX/4RX FOR 2 BANDS WITH SEPARATE RF PORTS UP TO 320W RF POWER SHARED BETWEEN 2 BANDS</div> <div>CARRIER CAPACITY: UP TO 24 CARRIER AND UP TO 10+25 MHz OBW FOR LTE 2x 10Gbps CPRI</div> <div>HEIGHT 18.0 in. (457 mm)</div> <div>WIDTH 13.2 in. (335 mm)</div> <div>DEPTH 9.4 in. (238.76 mm)</div> <div>WEIGHT 70 lbs. (31.7 Kg)</div> <div>-48 VDC</div> <div>2X20A FUSE (2 POWER CONNECTORS, 2 OR 3 WIRE)</div> <div>AISG TMA & RET SUPPORT (2 BIAS-T, 1 ALD PORT)</div> <div>TYPE 4.3 RF CONNECTORS</div> <div>2 EXTERNAL ALARMS</div> <div>IP 65, -40 TO +55 °C</div> <div><div><div></div><div></div><div></div></div><div>FRONT VIEW SIDE VIEW TOP VIEW BOTTOM VIEW</div></div>			<div>ERICSSON RRUS 4415</div> <div>COLOR: WHITE</div> <div>DIMENSIONS, HxWxD: 16.5" x 13.4" x 5.9"</div> <div>WEIGHT: 46 LBS.</div> <div>FAN INCLUDED.</div> <div><div><div></div><div></div><div></div></div><div>ISOMETRIC VIEW</div><div>FRONT VIEW SIDE VIEW</div></div>			<div>ANTENNA & RRU MOUNTING</div> <div>SCALE: N.T.S.</div>			NOT USED																																													
RRU 4449 SPECIFICATIONS			SCALE: N.T.S.	9	RADIO UNIT SPECIFICATIONS			SCALE: 1/8" = 1'-0"	10	ANTENNA & RRU MOUNTING			SCALE: N.T.S.	11	NOT USED			12																																				

**AIRPARK LAKE
ELSINORE**

32533 CORYDON ROAD
LAKE ELSINORE, CA 92530

SHEET TITLE:
EQUIPMENT PLATFORM
PLAN

A-4