

CITY OF LAKE ELSINORE

Landscape and Street Lighting Maintenance District No. 1



FISCAL YEAR 2019-20

PRELIMINARY ENGINEERS REPORT



SPICER CONSULTING
GROUP

Table of Contents

Sections

i. Introduction	i
1. Plans and Specifications	1
2. Cost Estimate	4
3. Method of Apportionment of Assessment	17
4. Assessment Rolls	30
5. District Diagram	31

Tables

Table 2-1 Zone 1 Budget	4
Table 2-2 Zone 2 Budget	5
Table 2-3 Zone 3 Budget	5
Table 2-4 Zone 4 Budget	6
Table 2-5 Zone 5 Budget	6
Table 2-6 Zone 6 Budget	7
Table 2-7 Zone 7 Budget	7
Table 2-8 Zone 8 Budget	8
Table 2-9 Zone 9 Budget	8
Table 2-10 Zone 10 Budget	9
Table 2-11 Zone 11 Budget	9
Table 2-12 Zone 12 Budget	10
Table 2-13 Zone 13 Budget	10
Table 2-14 Zone 14 Budget	11
Table 2-15 Zone 15 Budget	11
Table 2-16 Zone 16 Budget	12
Table 2-17 Zone 17 Budget	12
Table 2-18 Zone 18 Budget	13
Table 2-19 Zone 19 Budget	13

Table of Contents

Table 2-20 Zone 20 Budget	14
Table 2-21 Zone 21 Budget	14
Table 2-22 Zone 22 Budget	15
Table 2-23 Zone 23 Budget	15
Table 2-24 Zone 24 Budget	16
Table 2-25 Zone 25 Budget	16
Table 3-1 Zone 1 Assessment Summary	19
Table 3-2 Zone 2 Assessment Summary	19
Table 3-3 Zone 3 Assessment Summary	19
Table 3-4 Zone 4 Assessment Summary	20
Table 3-5 Zone 5 Assessment Summary	20
Table 3-6 Zone 6 Assessment Summary	20
Table 3-7 Zone 7 Assessment Summary	21
Table 3-8 Zone 8 Assessment Summary	21
Table 3-9 Zone 9 Assessment Summary	21
Table 3-10 Zone 10 Assessment Summary	21
Table 3-11 Zone 11 Assessment Summary	22
Table 3-12 Zone 12 Assessment Summary	22
Table 3-13 Zone 13 Assessment Summary	22
Table 3-14 Zone 14 Assessment Summary	22
Table 3-15 Zone 15 Assessment Summary	23
Table 3-16 Zone 16 Assessment Summary	23
Table 3-17 Zone 17 Assessment Summary	23
Table 3-18 Zone 18 Assessment Summary	23
Table 3-19 Zone 19 Assessment Summary	24
Table 3-20 Zone 20 Assessment Summary	24
Table 3-21 Zone 21 Assessment Summary	24
Table 3-22 Zone 22 Assessment Summary	24
Table 3-23 Zone 23 Assessment Summary	25

Table of Contents

Table 3-24 Zone 24 Assessment Summary	25
Table 3-25 Zone 25 Assessment Summary	25
Table 3-26 Summary of Assessments	26
Table 3-27 Summary of Assessments by Zone	26
Table 3-28 Proposed Assessments	27

Appendices

Appendix A – Assessment Rolls

Appendix B – District Diagram

AGENCY: CITY OF LAKE ELSINORE
PROJECT: LANDSCAPING AND LIGHTING MAINTENANCE DISTRICT NO. 1
TO: CITY COUNCIL
CITY OF LAKE ELSINORE
STATE OF CALIFORNIA

REPORT PURSUANT TO "LANDSCAPING AND LIGHTING ACT OF 1972"

Pursuant to direction from the City Council (the "City Council") of the City of Lake Elsinore (the "City"), State of California, submitted herewith is the Engineer's Report for Landscape and Street Lighting Maintenance District No. 1, consisting of the following parts, pursuant to the provisions of Division 15, Part 2 of the Streets and Highways Code of the State of California, being the "Landscaping and Lighting Act of 1972", as amended, commencing with Section 22500, and which is in accordance with Resolution No. 2019-___ adopted by the City of Lake Elsinore City Council, Riverside County, California ordering preparation of the Report for Landscape and Street Lighting Maintenance District No. 1 ("LMD No. 1" or the "District"). This Report is applicable for the ensuing 12-month period, being the Fiscal Year commencing July 1, 2019 to June 30, 2020.

- Section 1** **PLANS AND SPECIFICATIONS** describes the improvements within the District. Plans and specifications for the improvements showing and describing the general nature, location and extent of the improvements are incorporated herein by reference and are on file in the office of the Public Works Department.
- Section 2** A **COST ESTIMATE** of the proposed improvements, including incidental costs and expenses in connection therewith.
- Section 3** A **METHOD OF APPORTIONMENT OF ASSESSMENT** contains the method of apportionment of assessments, indicating the proposed assessment of the total amount of the costs and expenses of the improvements upon the several lots and parcels of land within the District, in proportion to the estimated benefits to be received by such lots and parcels.
- Section 4** The **ASSESSMENT ROLL** contains a list of Riverside County Assessor Parcel Numbers, and the net amount to be assessed upon the benefited lands within the District for Fiscal Year 2019-20. The Assessment Roll is filed in the office of the City of Lake Elsinore City Clerk and is incorporated in this Engineer's Report by reference.
- Section 5** **DISTRICT DIAGRAM** incorporates by reference a diagram of the District showing the exterior boundaries of the District, the boundaries of any zones within the District and the lines and dimensions of each lot or parcel of land within the District.

Background

The City Council of the City of Lake Elsinore approved the formation of Landscaping & Street Lighting Maintenance District No. 1 in 2003. The District was formed pursuant to the requirements of the Landscaping and Lighting Act of 1972.

The District was formed to provide a source of funds for the operation, servicing, maintenance and repair of landscaping, street lighting, public park and recreation facilities, and appurtenant facilities within the District. The Report sets forth the methodology to be used in apportioning the assessment to the different land use types and benefit zones within the City based upon the benefit they receive.

The original District was formed in 2003, then several “benefit zones” were annexed into the District in the following years. These benefit zones were established to ensure a source of funds for the ongoing maintenance of street lighting improvements and public landscaping which are of local benefit to the parcels within the benefit zone. Currently there are twenty-five (25) Zones of Benefit that have been annexed into the District (see Appendix B – District Diagram).

Parcels within these special benefit zones are assessed their proportionate share of the cost for the maintenance of local improvements including, but not limited to, street lighting, landscaping, public park and recreation facilities. These improvements provide a special benefit to those parcels due to their nature and location.

Current Annual Administration

As required by the Act, the Report includes: (1) a description of the improvements to be operated, maintained and serviced by the District, (2) an estimated budget for the District, and (3) a listing of the proposed Fiscal Year 2019-20 assessments to be levied upon each assessable lot or parcel within the District.

The City of Lake Elsinore will hold a Public Hearing on May 28, 2019 regarding the District which will provide an opportunity for any interested person to be heard. At the conclusion of the Public Hearing, the City Council may adopt a resolution confirming the assessment rates as originally proposed or as modified.

Payment of these annual assessments for each parcel will be made in the same manner and at the same time as payments are made for their annual property taxes. All funds collected through the assessments must be placed in a special fund and can only be used for the purposes stated within this Report.

Description of Improvements

The improvements which can be operated, maintained and serviced by the District consist of landscaping, street lighting, public park and recreation facilities, and appurtenant facilities including, but not limited to, personnel, electrical energy, utilities (e.g. water), materials, contractual services, and other items necessary for the facilities described below.

Landscaping facilities include, but are not limited to, landscaping, planting, shrubbery, trees, turf, irrigation systems, hardscapes, fixtures, trails, and appurtenant facilities, in public rights-of-way, parkways, slopes, and dedicated easements within the boundaries of the District.

Street lights and appurtenant facilities include, but are not limited to, poles, fixtures, bulbs, conduits, equipment including guys, anchors, posts, pedestals, and metering devices, as required to provide safe lighting within the boundaries of the District.

Public park and recreational facilities include, but are not limited to, landscaping, irrigation systems, hardscapes, sidewalks, trails, fixtures, and appurtenant facilities including, but not limited to: lights, playground equipment, play courts, public restrooms, sports fields, parkways, designated easements within the boundaries of these parks, and buildings or structures used for the support of recreational programs.

Maintenance for landscaping means the furnishing of services and materials for the ordinary and usual maintenance, operation, and servicing of the landscaping and appurtenant facilities including repair, removal, or replacement of all or part of any of the landscaping or appurtenant facilities; providing for the life, growth, health, and beauty of the landscaping including cultivation, irrigation, trimming, spraying, fertilizing, and treating for disease or injury; the removal of trimmings, rubbish, debris, and other solid waste; and the cleaning, sandblasting, and painting of walls and other improvements to remove or cover graffiti. Maintenance for street lights means the furnishing of services and materials for the ordinary and usual maintenance, operation and servicing of the street lights and appurtenant facilities including repair, removal, or replacement of all or part of any of the street lights or appurtenant facilities.

Servicing means the furnishing of water for the irrigation of the landscaping, the maintenance of any of the lighting or appurtenant facilities, and the furnishing of electric current or energy, gas, or other illuminating agent for the lighting facilities or for the lighting or operation of the landscaping or appurtenant facilities.

The plans and specifications for the improvements, showing and describing the general nature, location and the extent of the improvements, are on file in the office of the Director of Public Works and are incorporated herein by reference.

In order to accurately distribute the cost of the improvements maintained to the benefiting parcels, Zones of Benefit have been created throughout the City. The types of facilities to be maintained within each zone are described as follows:

Zone 1 (Original District) encompasses the Water Ridge Development and funds landscaping and street lighting maintenance and operations. The facilities within the public right-of-way that are to be maintained and serviced include approximately 10,039 square feet of landscaping and 49 street lights.

Zone 2 (Annexation No. 1) encompasses the Elsinore Homes Development and funds landscaping and street lighting maintenance and operations. The facilities within the public right-of-way that are to be maintained and serviced include approximately 5,850 square feet of landscaping and 16 street lights.

Zone 3 (Annexation No. 2) encompasses the Pepper Grove Development and funds landscaping and street lighting maintenance and operations. The facilities within the public right-of-way that are to be maintained and serviced include approximately 22,560 square feet of landscaping and 4 street lights.

Zone 4 (Annexation No. 3) encompasses the Serenity Development and funds landscape, street lighting, and park maintenance and operations. The facilities within the public right-of-way that are to be maintained and serviced include approximately 630 square feet of landscaping and 63 street lights. In addition, there is approximately 9.52 acres of neighborhood park landscaping.

Zone 5 (Annexation No. 4) encompasses the Rosetta Canyon Development and funds street lighting maintenance and operations. The facilities within the public right-of-way that are to be maintained and serviced include 263 street lights.

Zone 6 (Annexation No. 5) encompasses the La Laguna Phase 3 Development and funds street lighting maintenance and operations. The facilities within the public right-of-way that are to be maintained and serviced include 28 street lights.

Zone 7 (Annexation No. 6) encompasses Tract 28214 of the Alberhill Ranch Development and funds street lighting maintenance and operations. The facilities within the public right-of-way that are to be maintained and serviced include 244 street lights.

Zone 8 (Annexation No. 7) encompasses Tract 32670 of the Belcaro Development and funds landscape maintenance and operations. The facilities within the public right-of-way that are to be maintained and serviced include approximately 1,080 square feet of landscaping.

Zone 9 (Annexation No. 8) encompasses Tract 32077 of the La Strada Development and funds street lighting maintenance and operations. The facilities within the public right-of-way that are to be maintained and serviced include 36 street lights.

Zone 10 (Annexation No. 9) encompasses Tracts 30698 and 32129 of the Clurman-owned development and funds street lighting maintenance and operations. The facilities within the public right-of-way that are to be maintained and serviced include 38 street lights.

Zone 11 (Annexation No. 10) encompasses Tract 31920-1 of the Summerly Development and funds park landscaping and street lighting maintenance and operations. The facilities within the public right-of-way that are to be maintained and serviced include approximately 4.77 acres of landscaping and 464 street lights.

Zone 12 (Annexation No. 11) encompasses Tract 31957 of the Running Deer Estates development and funds landscaping and street lighting maintenance and operations. The facilities within the public right-of-way that are to be maintained and serviced include approximately 116,531 square feet of landscaping and 24 street lights.

Zone 13 (Annexation No. 12) encompasses Tract 33370 of the Tessera Development and funds landscaping and street lighting maintenance and operations. The facilities within the public right-of-way that are to be maintained and serviced include approximately 13,100 square feet of landscaping and 7 street lights.

Zone 14 (Annexation No. 13) encompasses Tract 31792 of the Wasson Canyon Development and funds street lighting maintenance and operations. The facilities within the public right-of-way that are to be maintained and serviced include 46 street lights.

Zone 15 (Annexation No. 14) encompasses Tract 34231 of the Trieste Development and funds landscaping and street lighting maintenance and operations. The facilities within the public right-of-way that are to be maintained and serviced include approximately 25,079 square feet of landscaping (along Ardenwood Way) and 9 street lights.

Zone 16 (Annexation No. 15) encompasses the Ridgestone Apartments Development and funds landscape maintenance and operations. The facilities within the public right-of-way that are to be maintained and serviced include approximately 1,100 square feet of landscaping (along Ardenwood Way), and future maintenance of 10,850 square feet of landscaping along Highway 74 (if maintenance is taken over by the City).

Zone 17 (Annexation No. 16) encompasses Tract 32503 of the Rosetta Canyon Development and funds street lighting maintenance and operations. The facilities within the public right-of-way that are to be maintained and serviced include 15 street lights.

Zone 18 (Annexation No. 17) encompasses Tract 32337-1 of the La Laguna Phases 4 & 5 Development and funds street lighting maintenance and operations. The facilities within the public right-of-way that are to be maintained and serviced include 36 street lights.

Zone 19 (Annexation No. 17) encompasses Tract 32337-2 of the La Laguna Phases 4 & 5 Development and funds street lighting maintenance and operations. The facilities within the public right-of-way that are to be maintained and serviced include 16 street lights.

Zone 20 (Annexation No. 18) encompasses Tract 17413-4 of the Tuscany Hills Estates Development and funds landscape maintenance and operations. The facilities within the public right-of-way (Via De La Valle, Via Del Lago and Via De La Luna) that are to be maintained and serviced include landscaping and a decomposed granite trail.

Zone 21 (Annexation No. 19) encompasses Tract 33486 of the Makenna Court Development and funds landscaping and street lighting maintenance and operations. The facilities within the public right-of-way that are to be maintained and serviced include approximately 9,800 square feet of landscaping and 22 street lights.

Zone 22 (Annexation No. 20) encompasses the California Business Condos Development and funds landscape maintenance and operations. The facilities within the public right-of-way that are to be maintained and serviced include approximately 4,150 square feet of landscaping (along Minthorn street), and future maintenance of 3,900 square feet of landscaping along Silver street.

Zone 23 (Annexation No. 21) encompasses the Diamond Professional Plaza Development and funds landscape maintenance and operations. The facilities within the public right-of-way that are to be maintained and serviced include approximately 7,500 square feet of landscaping along Diamond Drive.

Zone 24 (Annexation No. 22) encompasses Tract 32337 of the La Laguna Development and funds street lighting maintenance and operations. The facilities within the public right of way that are to be maintained and serviced include 19 street lights.

Zone 25 (Annexation No. 23) encompasses parcel number 377-090-042 and funds street lighting maintenance and operations. The facilities within the public right of way that are to be maintained and serviced include 4 street lights located on Crane Street and Dexter Avenue.

The Act requires that a special fund be set up for the collection of revenues and expenditures within the District. It also provides that the total cost of construction, operation, and maintenance and servicing of the public street lighting and landscaping facilities, etc. can be recovered by the District. Incidental expenses including administration of the District, engineering fees, legal fees, and all other costs associated with the construction, operation, and maintenance and servicing of the District can also be included.

Revenues collected from the assessments shall be used only for the expenditures represented above. A contribution to the District by the City of Lake Elsinore may be made to reduce assessments, as the City Council deems appropriate. Any balance remaining on July 1 at the end of the Fiscal Year must be carried over to the next Fiscal Year.

The estimated cost of the operation, maintenance and servicing of the landscaping and street light improvements for Fiscal Year 2019-20, as described in Section 1 Plans and Specifications, are summarized herein and described in the tables below. The below cost are rounded to the nearest whole dollar.

Table 2-1
Zone 1 Budget

Direct Costs	Estimated through June 30	
	FY 2018-19	FY 2019-20
Landscaping Operations & Maintenance	\$6,121	\$6,244
Street Lighting Operations & Maintenance	\$16,218	\$16,542
Park Landscaping Operations & Maintenance	\$0	\$0
Capital Replacement - Parks	\$0	\$0
Total Direct Costs	\$22,340	\$22,786
Indirect Costs		
Administration Costs	\$880	\$898
Assessment Engineer	\$549	\$568
Capital Improvement Reserves	\$0	\$0
Total Indirect Costs	\$1,430	\$1,466
Total Costs	\$23,769	\$24,252
Total Assessment	\$17,351	\$17,700
Surplus / (Deficit)	(\$6,418)	(\$6,553)

Table 2-2
Zone 2 Budget

Direct Costs	Estimated through June 30	
	FY 2018-19	FY 2019-20
Landscaping Operations & Maintenance	\$3,568	\$3,639
Street Lighting Operations & Maintenance	\$5,296	\$5,402
Park Landscaping Operations & Maintenance	\$0	\$0
Capital Replacement - Parks	\$0	\$0
Total Direct Costs	\$8,864	\$9,041
Indirect Costs		
Administration Costs	\$1,715	\$1,749
Assessment Engineer	\$329	\$340
Capital Improvement Reserves	\$0	\$0
Total Indirect Costs	\$2,044	\$2,089
Total Costs	\$10,908	\$11,131
Total Assessment	\$10,393	\$10,601
Surplus / (Deficit)	(\$515)	(\$530)

Table 2-3
Zone 3 Budget

Direct Costs	Estimated through June 30	
	FY 2018-19	FY 2019-20
Landscaping Operations & Maintenance	\$13,488	\$13,758
Street Lighting Operations & Maintenance	\$1,299	\$1,325
Park Landscaping Operations & Maintenance	\$0	\$0
Capital Replacement - Parks	\$0	\$0
Total Direct Costs	\$14,787	\$15,083
Indirect Costs		
Administration Costs	\$1,716	\$1,750
Assessment Engineer	\$534	\$552
Capital Improvement Reserves	\$0	\$0
Total Indirect Costs	\$2,249	\$2,302
Total Costs	\$17,036	\$17,384
Total Assessment	\$16,851	\$17,188
Surplus / (Deficit)	(\$185)	(\$196)

Table 2-4
Zone 4 Budget

	Estimated through June 30	
	FY 2018-19	FY 2019-20
Direct Costs		
Landscaping Operations & Maintenance	\$369	\$377
Street Lighting Operations & Maintenance	\$20,542	\$20,952
Park Landscaping Operations & Maintenance	\$24,372	\$24,859
Capital Replacement - Parks	\$6,579	\$6,710
Total Direct Costs	\$51,861	\$52,899
Indirect Costs		
Administration Costs	\$1,716	\$1,750
Assessment Engineer	\$1,955	\$2,021
Transfer to Operating Reserves	\$0	\$0
Total Indirect Costs	\$3,671	\$3,771
Total Costs	\$55,532	\$56,669
Total Assessment	\$61,734	\$62,970
General Benefit Contribution	\$13,170	\$13,434
Combined Assessment & General Fund Contribution	\$74,903	\$76,403
Surplus / (Deficit)	\$19,371	\$19,734

Table 2-5
Zone 5 Budget

	Estimated through June 30	
	FY 2018-19	FY 2019-20
Direct Costs		
Landscaping Operations & Maintenance	\$0	\$0
Street Lighting Operations & Maintenance	\$86,491	\$88,220
Park Landscaping Operations & Maintenance	\$0	\$0
Capital Replacement - Parks	\$0	\$0
Total Direct Costs	\$86,491	\$88,220
Indirect Costs		
Administration Costs	\$1,831	\$1,868
Assessment Engineer	\$2,938	\$3,036
Capital Improvement Reserves	\$0	\$0
Total Indirect Costs	\$4,769	\$4,905
Total Costs	\$91,260	\$93,125
Total Assessment	\$92,773	\$94,623
Surplus / (Deficit)	\$1,512	\$1,498

Table 2-6
Zone 6 Budget

	Estimated through June 30	
	FY 2018-19	FY 2019-20
Direct Costs		
Landscaping Operations & Maintenance	\$0	\$0
Street Lighting Operations & Maintenance	\$9,130	\$9,312
Park Landscaping Operations & Maintenance	\$0	\$0
Capital Replacement - Parks	\$0	\$0
Total Direct Costs	\$9,130	\$9,312
Indirect Costs		
Administration Costs	\$1,716	\$1,750
Assessment Engineer	\$343	\$355
Capital Improvement Reserves	\$0	\$0
Total Indirect Costs	\$2,059	\$2,105
Total Costs	\$11,189	\$11,417
Total Assessment	\$10,833	\$11,049
Surplus / (Deficit)	(\$356)	(\$368)

Table 2-7
Zone 7 Budget

	Estimated through June 30	
	FY 2018-19	FY 2019-20
Direct Costs		
Landscaping Operations & Maintenance	\$0	\$0
Street Lighting Operations & Maintenance	\$79,559	\$81,150
Park Landscaping Operations & Maintenance	\$0	\$0
Capital Replacement - Parks	\$0	\$0
Total Direct Costs	\$79,559	\$81,150
Indirect Costs		
Administration Costs	\$1,715	\$1,749
Assessment Engineer	\$2,129	\$2,160
Capital Improvement Reserves	\$0	\$0
Total Indirect Costs	\$3,844	\$3,909
Total Costs	\$83,403	\$85,059
Total Assessment	\$67,234	\$67,298
Surplus / (Deficit)	(\$16,169)	(\$17,761)

Table 2-8
Zone 8 Budget

	Estimated through June 30	
	FY 2018-19	FY 2019-20
Direct Costs		
Landscaping Operations & Maintenance	\$653	\$666
Street Lighting Operations & Maintenance	\$0	\$0
Park Landscaping Operations & Maintenance	\$0	\$0
Capital Replacement - Parks	\$0	\$0
Total Direct Costs	\$653	\$666
Indirect Costs		
Administration Costs	\$916	\$934
Assessment Engineer	\$41	\$43
Capital Improvement Reserves	\$0	\$0
Total Indirect Costs	\$957	\$977
Total Costs	\$1,610	\$1,643
Total Assessment	\$1,308	\$1,334
Surplus / (Deficit)	(\$301)	(\$309)

Table 2-9
Zone 9 Budget¹

	Estimated through June 30	
	FY 2018-19	FY 2019-20
Direct Costs		
Landscaping Operations & Maintenance	\$0	\$0
Street Lighting Operations & Maintenance	\$0	\$0
Park Landscaping Operations & Maintenance	\$0	\$0
Capital Replacement - Parks	\$0	\$0
Total Direct Costs	\$0	\$0
Indirect Costs		
Administration Costs	\$0	\$0
Assessment Engineer	\$0	\$0
Capital Improvement Reserves	\$0	\$0
Total Indirect Costs	\$0	\$0
Total Costs	\$0	\$0
Total Assessment	\$0	\$0
Surplus / (Deficit)	\$0	\$0

¹ Not levied in Fiscal Year 2019-20. Improvements have not been accepted at this time.

Table 2-10
Zone 10 Budget¹

Direct Costs	Estimated through June 30	
	FY 2018-19	FY 2019-20
Landscaping Operations & Maintenance	\$0	\$0
Street Lighting Operations & Maintenance	\$0	\$0
Park Landscaping Operations & Maintenance	\$0	\$0
Capital Replacement - Parks	\$0	\$0
Total Direct Costs	\$0	\$0
Indirect Costs		
Administration Costs	\$0	\$0
Assessment Engineer	\$0	\$0
Capital Improvement Reserves	\$0	\$0
Total Indirect Costs	\$0	\$0
Total Costs	\$0	\$0
Total Assessment	\$0	\$0
Surplus / (Deficit)	\$0	\$0

Table 2-11
Zone 11 Budget

Direct Costs	Estimated through June 30	
	FY 2018-19	FY 2019-20
Landscaping Operations & Maintenance	\$0	\$0
Street Lighting Operations & Maintenance	\$82,278	\$83,923
Park Landscaping Operations & Maintenance	\$66,237	\$67,562
Capital Replacement - Parks	\$0	\$0
Total Direct Costs	\$148,515	\$151,485
Indirect Costs		
Administration Costs	\$916	\$934
Assessment Engineer	\$7,689	\$7,947
Capital Improvement Reserves	\$0	\$0
Total Indirect Costs	\$8,604	\$8,881
Total Costs	\$157,119	\$160,366
Total Assessment	\$242,778	\$247,638
Surplus / (Deficit)	\$85,659	\$87,272

¹ Not levied in Fiscal Year 2019-20. Improvements have not been accepted at this time.

Table 2-12
Zone 12 Budget¹

Direct Costs	Estimated through June 30	
	FY 2018-19	FY 2019-20
Landscaping Operations & Maintenance	\$0	\$0
Street Lighting Operations & Maintenance	\$0	\$0
Park Landscaping Operations & Maintenance	\$0	\$0
Capital Replacement - Parks	\$0	\$0
Total Direct Costs	\$0	\$0
Indirect Costs		
Administration Costs	\$0	\$0
Assessment Engineer	\$0	\$0
Capital Improvement Reserves	\$0	\$0
Total Indirect Costs	\$0	\$0
Total Costs	\$0	\$0
Total Assessment	\$0	\$0
Surplus / (Deficit)	\$0	\$0

Table 2-13
Zone 13 Budget¹

Direct Costs	Estimated through June 30	
	FY 2018-19	FY 2019-20
Landscaping Operations & Maintenance	\$0	\$0
Street Lighting Operations & Maintenance	\$0	\$0
Park Landscaping Operations & Maintenance	\$0	\$0
Capital Replacement - Parks	\$0	\$0
Total Direct Costs	\$0	\$0
Indirect Costs		
Administration Costs	\$0	\$0
Assessment Engineer	\$0	\$0
Capital Improvement Reserves	\$0	\$0
Total Indirect Costs	\$0	\$0
Total Costs	\$0	\$0
Total Assessment	\$0	\$0
Surplus / (Deficit)	\$0	\$0

¹ Not levied in Fiscal Year 2019-20. Improvements have not been accepted at this time.

Table 2-14
Zone 14 Budget

	Estimated through June 30	
	FY 2018-19	FY 2019-20
Direct Costs		
Landscaping Operations & Maintenance	\$0	\$0
Street Lighting Operations & Maintenance	\$15,818	\$16,135
Park Landscaping Operations & Maintenance	\$0	\$0
Capital Replacement - Parks	\$0	\$0
Total Direct Costs	\$15,818	\$16,135
Indirect Costs		
Administration Costs	\$1,716	\$1,750
Assessment Engineer	\$567	\$586
Capital Improvement Reserves	\$0	\$0
Total Indirect Costs	\$2,283	\$2,336
Total Costs	\$18,101	\$18,471
Total Assessment	\$17,898	\$18,255
Surplus / (Deficit)	(\$203)	(\$216)

Table 2-15
Zone 15 Budget

	Estimated through June 30	
	FY 2018-19	FY 2019-20
Direct Costs		
Landscaping Operations & Maintenance	\$10,442	\$10,651
Street Lighting Operations & Maintenance	\$2,084	\$2,126
Park Landscaping Operations & Maintenance	\$0	\$0
Capital Replacement - Parks	\$0	\$0
Total Direct Costs	\$12,527	\$12,777
Indirect Costs		
Administration Costs	\$0	\$0
Assessment Engineer	\$412	\$425
Capital Improvement Reserves	\$0	\$0
Total Indirect Costs	\$412	\$425
Total Costs	\$12,938	\$13,203
Total Assessment	\$12,998	\$13,259
Surplus / (Deficit)	\$59	\$56

Table 2-16
Zone 16 Budget

Direct Costs	Estimated through June 30	
	FY 2018-19	FY 2019-20
Landscaping Operations & Maintenance	\$7,236	\$7,381
Street Lighting Operations & Maintenance	\$0	\$0
Park Landscaping Operations & Maintenance	\$0	\$0
Capital Replacement - Parks	\$0	\$0
Total Direct Costs	\$7,236	\$7,381
Indirect Costs		
Administration Costs	\$916	\$934
Assessment Engineer	\$268	\$277
Capital Improvement Reserves	\$0	\$0
Total Indirect Costs	\$1,184	\$1,211
Total Costs	\$8,419	\$8,592
Total Assessment	\$8,455	\$8,629
Surplus / (Deficit)	\$36	\$37

Table 2-17
Zone 17 Budget

Direct Costs	Estimated through June 30	
	FY 2018-19	FY 2019-20
Landscaping Operations & Maintenance	\$0	\$0
Street Lighting Operations & Maintenance	\$5,159	\$5,262
Park Landscaping Operations & Maintenance	\$0	\$0
Capital Replacement - Parks	\$0	\$0
Total Direct Costs	\$5,159	\$5,262
Indirect Costs		
Administration Costs	\$1,715	\$1,749
Assessment Engineer	\$209	\$216
Capital Improvement Reserves	\$0	\$0
Total Indirect Costs	\$1,924	\$1,965
Total Costs	\$7,083	\$7,227
Total Assessment	\$6,606	\$6,738
Surplus / (Deficit)	(\$477)	(\$489)

Table 2-18
Zone 18 Budget

	Estimated through June 30	
	FY 2018-19	FY 2019-20
Direct Costs		
Landscaping Operations & Maintenance	\$0	\$0
Street Lighting Operations & Maintenance	\$12,380	\$12,628
Park Landscaping Operations & Maintenance	\$0	\$0
Capital Replacement - Parks	\$0	\$0
Total Direct Costs	\$12,380	\$12,628
Indirect Costs		
Administration Costs	\$916	\$934
Assessment Engineer	\$435	\$450
Capital Improvement Reserves	\$0	\$0
Total Indirect Costs	\$1,351	\$1,384
Total Costs	\$13,731	\$14,012
Total Assessment	\$13,747	\$14,023
Surplus / (Deficit)	\$15	\$11

Table 2-19
Zone 19 Budget

	Estimated through June 30	
	FY 2018-19	FY 2019-20
Direct Costs		
Landscaping Operations & Maintenance	\$0	\$0
Street Lighting Operations & Maintenance	\$5,983	\$6,103
Park Landscaping Operations & Maintenance	\$0	\$0
Capital Replacement - Parks	\$0	\$0
Total Direct Costs	\$5,983	\$6,103
Indirect Costs		
Administration Costs	\$880	\$880
Assessment Engineer	\$205	\$212
Capital Improvement Reserves	\$0	\$0
Total Indirect Costs	\$1,085	\$1,092
Total Costs	\$7,068	\$7,194
Total Assessment	\$6,464	\$6,594
Surplus / (Deficit)	(\$604)	(\$600)

Table 2-20
Zone 20 Budget

Direct Costs	Estimated through June 30	
	FY 2018-19	FY 2019-20
Landscaping Operations & Maintenance	\$13,027	\$13,553
Street Lighting Operations & Maintenance	\$0	\$0
Park Landscaping Operations & Maintenance	\$0	\$0
Capital Replacement - Parks	\$0	\$0
Total Direct Costs	\$13,027	\$13,553
Indirect Costs		
Administration Costs	\$1,682	\$1,750
Assessment Engineer	\$446	\$395
Transfer to Operating Reserves	\$0	\$0
Total Indirect Costs	\$2,129	\$2,145
Total Costs	\$15,155	\$15,698
Total Assessment	\$11,817	\$12,294
Citywide LMD Contribution	\$0	\$0
Combined Assessment & General Fund Contribution	\$11,817	\$12,294
Surplus / (Deficit)	(\$3,338)	(\$3,404)

Table 2-21
Zone 21 Budget

Direct Costs	Estimated through June 30	
	FY 2018-19	FY 2019-20
Landscaping Operations & Maintenance	\$7,733	\$7,733
Street Lighting Operations & Maintenance	\$4,012	\$4,012
Park Landscaping Operations & Maintenance	\$0	\$0
Capital Replacement - Parks	\$0	\$0
Total Direct Costs	\$11,745	\$11,745
Indirect Costs		
Administration Costs	\$1,286	\$1,270
Assessment Engineer	\$476	\$492
Capital Improvement Reserves	\$0	\$0
Total Indirect Costs	\$1,762	\$1,762
Total Costs	\$13,507	\$13,507
Total Assessment	\$15,021	\$15,322
Surplus / (Deficit)	\$1,514	\$1,815

Table 2-22
Zone 22 Budget

Direct Costs	Estimated through June 30	
	FY 2018-19	FY 2019-20
Landscaping Operations & Maintenance	\$5,187	\$5,290
Street Lighting Operations & Maintenance	\$0	\$0
Park Landscaping Operations & Maintenance	\$0	\$0
Capital Replacement - Parks	\$0	\$0
Total Direct Costs	\$5,187	\$5,290
Indirect Costs		
Administration Costs	\$916	\$934
Assessment Engineer	\$201	\$207
Capital Improvement Reserves	\$0	\$0
Total Indirect Costs	\$1,116	\$1,141
Total Costs	\$6,303	\$6,432
Total Assessment	\$6,332	\$6,459
Surplus / (Deficit)	\$29	\$27

Table 2-23
Zone 23 Budget

Direct Costs	Estimated through June 30	
	FY 2018-19	FY 2019-20
Landscaping Operations & Maintenance	\$4,355	\$4,443
Street Lighting Operations & Maintenance	\$0	\$0
Park Landscaping Operations & Maintenance	\$0	\$0
Capital Replacement - Parks	\$0	\$0
Total Direct Costs	\$4,355	\$4,443
Indirect Costs		
Administration Costs	\$916	\$934
Assessment Engineer	\$173	\$179
Capital Improvement Reserves	\$0	\$0
Total Indirect Costs	\$1,089	\$1,113
Total Costs	\$5,444	\$5,555
Total Assessment	\$5,472	\$5,582
Surplus / (Deficit)	\$28	\$26

Table 2-24
Zone 24 Budget

Direct Costs	Estimated through June 30	
	FY 2018-19	FY 2019-20
Landscaping Operations & Maintenance	\$0	\$0
Street Lighting Operations & Maintenance	\$5,546	\$5,657
Park Landscaping Operations & Maintenance	\$0	\$0
Capital Replacement - Parks	\$0	\$0
Total Direct Costs	\$5,546	\$5,657
Indirect Costs		
Administration Costs	\$880	\$880
Assessment Engineer	\$209	\$216
Capital Improvement Reserves	\$0	\$0
Total Indirect Costs	\$1,089	\$1,096
Total Costs	\$6,634	\$6,752
Total Assessment	\$6,587	\$6,720
Surplus / (Deficit)	(\$47)	(\$33)

Table 2-25
Zone 25 Budget

Direct Costs	Estimated through June 30	
	FY 2018-19	FY 2019-20
Landscaping Operations & Maintenance	\$0	\$0
Street Lighting Operations & Maintenance	\$2,229	\$2,273
Park Landscaping Operations & Maintenance	\$0	\$0
Capital Replacement - Parks	\$0	\$0
Total Direct Costs	\$2,229	\$2,273
Indirect Costs		
Administration Costs	\$77	\$79
Assessment Engineer	\$52	\$53
Capital Improvement Reserves	\$0	\$0
Total Indirect Costs	\$129	\$132
Total Costs	\$2,358	\$2,405
Total Assessment	\$1,629	\$1,661
Surplus / (Deficit)	(\$729)	(\$744)

General

Part 2 of Division 15 of the Streets and Highways Code, the Landscaping and Lighting Act of 1972, permits the establishment of assessment districts by Agencies for the purpose of providing certain public improvements which include the installation, construction, operation, maintenance and servicing of street lights, traffic signals and landscaping.

Section 22573 of the 1972 Act requires that maintenance assessments be levied according to benefit rather than according to assessed value. This section states:

"The net amount to be assessed upon lands within an assessment district may be apportioned by any formula or method which fairly distributes the net amount among all assessable lots or parcels in proportion to the estimated benefits to be received by each such lot or parcel from the improvements."

The Act also permits the designation of zones of benefit within any individual assessment district if "by reason of variations in the nature, location, and extent of the improvements, the various areas will receive different degrees of benefit from the improvements" (Sec. 22574). Thus, the Act requires the levy of a true "assessment" based on the actual benefit rather than a "special tax."

In addition, Proposition 218, the "Right to Vote on Taxes Act," which was approved on the November 1996 Statewide ballot and added Article XIII D to the California Constitution, requires that a parcel's assessment may not exceed the reasonable cost of the proportional special benefit conferred on that parcel. Article XIII D provides that only special benefits are assessable and the City must separate the general benefits from the special benefits. Article XIII D also requires that publicly owned property which benefits from the improvements be assessed.

Reason for Assessment

The assessment is proposed to be levied to pay for the costs of the construction, maintenance and servicing of landscaping, street lighting and appurtenant improvements within the District.

Special Benefit Analysis

STREET LANDSCAPING, SLOPES, AND GREENBELTS – Trees, landscaping, hardscape and appurtenant facilities, if well maintained, provide beautification, shade and enhancement of the desirability of the surroundings, and therefore increase property value.

In Parkways and Land Values, written by John Nolan and Henry V. Hubbard in 1937, it is stated:

"...there is no lack of opinion, based on general principals and experience and common sense, that parkways do in fact add value to property, even though the amount cannot be determined exactly.... Indeed, in most cases where public money has been spent for parkways the assumption has been definitely made that the proposed parkway will show a provable financial profit to the City. It has been believed that the establishment of parkways causes a rise in real estate values throughout the City, or in parts of the City..."

It should be noted that the definition of "parkways" above may include the roadway as well as the landscaping alongside the roadway. The ongoing operation and maintenance of the street landscaping, slopes and greenways within the individual district, as identified in Section 1 of this Report, provide beautification to the areas that results in a special benefit to the parcels within the tracts adjacent to the improvements. If these landscaped areas were not properly maintained, the tract would be blighted.

The City of Lake Elsinore considers the maintenance and upkeep of parkways and adjacent slopes to be the responsibility of the adjacent development due to the added beautification of the local community which extends to the perimeter of the development.

Street Lighting – Proper maintenance and operation of the streetlights benefit all properties within the District by providing security, safety and community character and vitality as outlined below. Streetlights provide only incidental benefits to motorists traveling to, from or through the area.

Benefits of Street Lighting

SECURITY AND SAFETY

- ◆ Mitigates crime
- ◆ Alleviates the fear of crime
- ◆ Enhances safe ingress/egress to property

COMMUNITY CHARACTER AND VITALITY

- ◆ Promotes social interaction
- ◆ Promotes business and industry
- ◆ Contributes to a positive nighttime visual image

Improvements that provide a special benefit to an isolated group of parcels of land located within the District are considered to be a localized benefit, and the costs associated with these improvements are assessed to all assessable parcels receiving the localized benefit. Localized benefits include the construction, operation, maintenance and servicing of the improvements that only benefit the parcels located within the localized areas.

Localized Improvements – Parcels that have localized landscaping, such as entryway landscaping, parkway landscaping, etc. and street lighting, adjacent to or near their parcels directly benefit from the improvements and are assessed for the costs of the localized improvements.

Assessment Methodology

The maximum annual maintenance assessments shall be increased each year by 2%. The actual assessments levied in any fiscal year will be as approved by the City Council and may not exceed the maximum assessment rate without receiving property owner approval for the increase.

To establish the special benefit to the individual parcels within the District, an Equivalent Dwelling Unit system is used. Each parcel of land is assigned Equivalent Dwelling Units (“EDUs”) in proportion to the estimated special benefit the parcel receives relative to the other parcels within the District from landscaping and/or streetlights.

A single-family detached (“SFD”) residential parcel has been selected as the basic unit for calculation of assessments; therefore, the SFD residential parcel is defined as one Equivalent Dwelling Unit (1 EDU). A methodology has been developed to relate all other land uses within each zone to the SFD residential land use as described below. Unless otherwise stated, the following is the methodology.

Equivalent Dwelling Units

Single Family Detached (SFD) – The SFD residential lots benefit equally from the improvements being maintained and are therefore each assigned 1 EDU.

Condominiums – Condominiums will be assessed equivalent to a SFD residential lot; therefore 1 EDU per unit.

Multi-Family Residential (Apartments) – Multi-family residential parcel equivalencies are determined by multiplying the number of dwelling units on each parcel by 0.75, due to the relative population density of this type of dwelling unit and reduced unit size compared to the typical density and size of an SFD. Studies have consistently shown that the average apartment unit impacts infrastructure approximately 75% as much as a single-family residence. (Sources: Institute of Transportation Engineers Informational Report Trip Generation, Fifth Edition, 1991; Metcalf & Eddy, Wastewater Engineering Treatment, Disposal, Reuse, Third Edition, 1991). Trip generation and wastewater usage are a function of population density. Based on this, it is concluded that other infrastructure will be similarly impacted at a reduced level. The smaller average unit size of multiple-residential parcels result in a lesser enhancement per unit to property values. Therefore, multi-family residential parcels are assessed 0.75 EDUs per unit.

Developed Non-Residential (Non-Res) – Developed non-residential properties are defined as improved commercial, industrial, and institutional properties (such as school property or churches). In converting these properties to EDUs the size of the parcels are compared to the average size of an SFD residential lot, which is 7,260 square feet. This equals approximately 6 SFD lots per acre of land. Therefore, developed non-residential parcels are assigned EDUs at a rate of 6 EDUs per acre.

Vacant/Parks – Based upon the opinions of professional appraisers, appraising current market property values for real estate in Southern California, the land value portion of a property typically ranges from 20 to 30 percent of the property's total value. Additionally, the utilization of vacant property is significantly less than improved property and vacant property has a traffic generation rate of 0. Therefore, vacant parcels will be assessed at the rate of 25% of Non-Residential properties, or 1.5 EDU per acre or any portion thereof.

Open Space – Parcels designated as open space do not receive special benefits from the improvements and are therefore exempt from the assessment.

Benefit Zones

A system of zones, encompassing both street lighting and street landscaping levels of service, has been developed. These zones, combined with an assigned land use based on the County-assigned use code for each parcel, have been used as the methodology for spreading the assessments to each parcel within the City.

Table 3-1
Zone 1 – Assessment Summary

There are one hundred thirty-three Single Family Detached parcels within Zone 1. Each of these developed parcels is deemed to receive proportional special benefit from the maintenance and operation of the improvements.

Zone 1	Estimated Cost FY 2019-20	Assessable EDUs	Applied Assessment per EDU FY 2019-20	Max Assessment per EDU FY 2019-20	Max Assessment per EDU FY 2018-19	Max Assessment Rate Change (%)
Water Ridge	\$24,252.18	133	\$133.08	\$133.09	\$130.48	2.0%

Table 3-2
Zone 2 – Assessment Summary

There are fifty Single Family Detached parcels within Zone 2. Each of these developed parcels is deemed to receive proportional special benefit from the maintenance and operation of the improvements.

Zone 2	Estimated Cost FY 2019-20	Assessable EDUs	Applied Assessment per EDU FY 2019-20	Max Assessment per EDU FY 2019-20	Max Assessment per EDU FY 2018-19	Max Assessment Rate Change (%)
Elsinore Homes	\$11,130.71	50	\$212.02	\$212.03	\$207.87	2.0%

Table 3-3
Zone 3 – Assessment Summary

There are twenty-nine Single Family Dwelling parcels within Zone 3. Each of these developed parcels is deemed to receive proportional special benefit from the maintenance and operation of the improvements.

Zone 3	Estimated Cost FY 2019-20	Assessable EDUs	Applied Assessment per EDU FY 2019-20	Max Assessment per EDU FY 2019-20	Max Assessment per EDU FY 2018-19	Max Assessment Rate Change (%)
Pepper Grove	\$17,384.37	29	\$592.70	\$592.72	\$581.09	2.0%

Table 3-4

Zone 4 – Assessment Summary

Types of Benefit For Park Maintenance - Within the Zone 4 Serenity development boundary is a 9.52-acre neighborhood park. As a condition of development, the developer must provide for the on-going operation and maintenance of the landscaping improvements for said park.

Development Benefit - All two hundred thirty-three parcels within the development were classified as having a development benefit, since the creation of this funding mechanism satisfies a condition of approval for the development.

Service Benefit - A neighborhood park, by definition, is a park of typically 5 to 20 acres in size and serving an area from ¼ mile up to ½ mile distance, which is generally within walking distance of the park. The park within the Zone 4 boundary is small in size (less than 10 acres); therefore, a service area radius of ¼ mile is used for the service benefit. All parcels within Zone 4 that are in the ¼ mile radius will be assessed for service benefit, in addition to the development benefit, due to their proximity to the park. Therefore, 158 parcels within the development receive the service benefit.

General Benefit - Parcels that are within the ¼ mile radius but not within the District boundaries are considered to receive general, rather than special benefit and are therefore not assessed. There are 54 parcels equaling 165.275 EDUs of general benefit, for a total general benefit contribution of \$13,434.

There are two hundred thirty-three Single Family Dwelling parcels within Zone 4. In addition to the landscaping and street lighting maintenance, there is a park maintenance component in this zone.

Zone 4	Estimated Cost FY 2019-20	Assessable EDUs	Applied Assessment per EDU FY 2019-20	Max Assessment per EDU FY 2019-20	Max Assessment per EDU FY 2018-19	Max Assessment Rate Change (%)
Serenity	\$56,669.15	232				
Development	\$14,806.82	233	\$215.14	\$215.16	\$210.94	2.0%
General	\$41,862.33	158	\$296.42	\$296.44	\$290.63	2.0%

Table 3-5

Zone 5 – Assessment Summary

There are one thousand twelve Single Family Dwelling parcels within Zone 5, separated by the two phases within the development.

Zone 5	Estimated Cost FY 2019-20	Assessable EDUs	Applied Assessment per EDU FY 2019-20	Max Assessment per EDU FY 2019-20	Max Assessment per EDU FY 2018-19	Max Assessment Rate Change (%)
Rosetta Canyon	\$93,125.02	1,012				
Phase 1	\$41,902.64	509	\$83.66	\$83.67	\$82.03	2.0%
Phase 2	\$51,222.38	503	\$103.46	\$103.48	\$101.45	2.0%

Table 3-6

Zone 6 – Assessment Summary

There are ninety-eight Single Family Detached parcels within Zone 6. Each of these developed parcels is deemed to receive proportional special benefit from the maintenance and operation of the improvements.

Zone 6	Estimated Cost FY 2019-20	Assessable EDUs	Applied Assessment per EDU FY 2019-20	Max Assessment per EDU FY 2019-20	Max Assessment per EDU FY 2018-19	Max Assessment Rate Change (%)
La Laguna Phase 3	\$11,417.00	98	\$112.74	\$112.75	\$110.54	2.0%

Table 3-7
Zone 7 – Assessment Summary

There are five hundred sixty-seven Single Family Dwelling parcels and eleven vacant/park parcels within Zone 7. Each of these parcels is deemed to receive special benefit from the maintenance and operation of the improvements.

Zone 7	Estimated Cost FY 2019-20	Assessable EDUs	Applied Assessment per EDU FY 2019-20	Max Assessment per EDU FY 2019-20	Max Assessment per EDU FY 2018-19	Max Assessment Rate Change (%)
Alberhill Ranch	\$85,058.73	807	\$83.44	\$83.45	\$81.82	2.0%

Table 3-8
Zone 8 – Assessment Summary

There are one hundred forty-one condominium parcels within Zone 8. Each of these developed parcels is deemed to receive proportional special benefit from the maintenance and operation of the improvements.

Zone 8	Estimated Cost FY 2019-20	Assessable EDUs	Applied Assessment per EDU FY 2019-20	Max Assessment per EDU FY 2019-20	Max Assessment per EDU FY 2018-19	Max Assessment Rate Change (%)
Belcaro	\$1,642.65	141	\$9.46	\$9.48	\$9.29	2.0%

Table 3-9
Zone 9 – Assessment Summary

There are one hundred twenty-eight Single Family Undeveloped parcels and one vacant/park parcel with a lot area of 1.57 acres within Zone 9. Each of these parcels is deemed to receive special benefit from the maintenance and operation of the improvements.

Zone 9	Estimated Cost FY 2019-20	Assessable EDUs	Applied Assessment per EDU FY 2019-20	Max Assessment per EDU FY 2019-20	Max Assessment per EDU FY 2018-19	Max Assessment Rate Change (%)
La Strada	\$0.00	0	\$0.00	\$102.89	\$100.88	2.0%

Table 3-10
Zone 10 – Assessment Summary

There are one hundred fifty-eight Single Family Undeveloped parcels within Zone 10. Each of these developed parcels is deemed to receive proportional special benefit from the maintenance and operation of the improvements.

Zone 10	Estimated Cost FY 2019-20	Assessable EDUs	Applied Assessment per EDU FY 2019-20	Max Assessment per EDU FY 2019-20	Max Assessment per EDU FY 2018-19	Max Assessment Rate Change (%)
Tract 30698 & 32129	\$0.00	0	\$0.00	\$80.22	\$78.64	2.0%

Table 3-11

Zone 11 – Assessment Summary

There are eleven hundred twenty-six Single Family Dwelling parcels, eleven vacant/park parcels, and two non-residential parcels with an area of 145.34 acres, and two non-residential parcels with an area of 14.93 acres within this zone. In addition, the golf course associated with the development on the northwest side does not have any localized improvements and is, therefore, not included within the boundaries of the District.

Zone 11	Estimated Cost FY 2019-20	Assessable EDUs	Applied Assessment per EDU FY 2019-20	Max Assessment per EDU FY 2019-20	Max Assessment per EDU FY 2018-19	Max Assessment Rate Change (%)
Summerly	\$160,366.14	1,354				
Lighting 1 Developed	\$128,020.79	1,216	\$98.86	\$98.86	\$96.92	2.0%
Landscaping	\$2,906.75	1,354	\$84.07	\$84.07	\$82.42	2.0%
Lighting 2 Undeveloped	\$29,438.60	138	\$98.86	\$98.86	\$96.92	2.0%

Table 3-12

Zone 12 – Assessment Summary

There are two vacant parcels with an area of 34.24 acres within Zone 12.

Zone 12	Estimated Cost FY 2019-20	Assessable EDUs	Applied Assessment per EDU FY 2019-20	Max Assessment per EDU FY 2019-20	Max Assessment per EDU FY 2018-19	Max Assessment Rate Change (%)
Tract 31957	\$0.00	0	\$0.00	\$633.48	\$621.06	2.0%

Table 3-13

Zone 13 – Assessment Summary

There is one vacant parcel with an area of 9.05 acres within Zone 13.

Zone 13	Estimated Cost FY 2019-20	Assessable EDUs	Applied Assessment per EDU FY 2019-20	Max Assessment per EDU FY 2019-20	Max Assessment per EDU FY 2018-19	Max Assessment Rate Change (%)
Tessera	\$0.00	0	\$0.00	\$135.86	\$133.19	2.0%

Table 3-14

Zone 14 – Assessment Summary

There are one hundred ninety Single Family Dwelling parcels within Zone 14. Each of these developed parcels is deemed to receive proportional special benefit from the maintenance and operation of the improvements.

Zone 14	Estimated Cost FY 2019-20	Assessable EDUs	Applied Assessment per EDU FY 2019-20	Max Assessment per EDU FY 2019-20	Max Assessment per EDU FY 2018-19	Max Assessment Rate Change (%)
Wasson Canyon	\$18,470.83	190	\$96.08	\$96.09	\$94.21	2.0%

Table 3-15

Zone 15 – Assessment Summary

There are seventy-five Single Family Dwelling parcels within Zone 15. Each of these developed parcels is deemed to receive proportional special benefit from the maintenance and operation of the improvements.

Zone 15	Estimated Cost FY 2019-20	Assessable EDUs	Applied Assessment per EDU FY 2019-20	Max Assessment per EDU FY 2019-20	Max Assessment per EDU FY 2018-19	Max Assessment Rate Change (%)
Trieste	\$13,202.69	75	\$176.78	\$176.79	\$173.32	2.0%

Table 3-16

Zone 16 – Assessment Summary

There are two multi-family residential parcels with a total of three hundred fifty-two apartment dwelling units within Zone 16. The development was built to convert to condominiums in the future; therefore, each apartment unit is assigned 1 EDU. Each of these developed parcels is deemed to receive proportional special benefit from the maintenance and operation of the improvements.

Zone 16	Estimated Cost FY 2019-20	Assessable EDUs	Applied Assessment per EDU FY 2019-20	Max Assessment per EDU FY 2019-20	Max Assessment per EDU FY 2018-19	Max Assessment Rate Change (%)
Ridgestone Apartments	\$8,591.65	352	\$24.51	\$24.51	\$24.03	2.0%

Table 3-17

Zone 17 – Assessment Summary

There are sixty Single Family Dwelling parcels within Zone 17. Each of these developed parcels is deemed to receive proportional special benefit from the maintenance and operation of the improvements.

Zone 17	Estimated Cost FY 2019-20	Assessable EDUs	Applied Assessment per EDU FY 2019-20	Max Assessment per EDU FY 2019-20	Max Assessment per EDU FY 2018-19	Max Assessment Rate Change (%)
Tract 32503	\$7,227.14	60	\$112.30	\$112.31	\$110.11	2.0%

Table 3-18

Zone 18 – Assessment Summary

There are ninety-four Single Family Dwelling parcels within Zone 18. Each of these developed parcels is deemed to receive proportional special benefit from the maintenance and operation of the improvements.

Zone 18	Estimated Cost FY 2019-20	Assessable EDUs	Applied Assessment per EDU FY 2019-20	Max Assessment per EDU FY 2019-20	Max Assessment per EDU FY 2018-19	Max Assessment Rate Change (%)
La Laguna Phase 4	\$14,011.80	94	\$149.18	\$149.18	\$146.26	2.0%

Table 3-19

Zone 19 – Assessment Summary

There are one hundred five Single Family Dwelling parcels within Zone 19. Each of these developed parcels is deemed to receive proportional special benefit from the maintenance and operation of the improvements.

Zone 19	Estimated Cost FY 2019-20	Assessable EDUs	Applied Assessment per EDU FY 2019-20	Max Assessment per EDU FY 2019-20	Max Assessment per EDU FY 2018-19	Max Assessment Rate Change (%)
La Laguna Phase 5	\$7,194.36	105	\$62.80	\$62.80	\$61.57	2.0%

Table 3-20

Zone 20 – Assessment Summary

There are twenty-one Single Family Dwelling parcels and two vacant parcels within Zone 20. Each of these parcels is deemed to receive special benefit from the maintenance and operation of the improvements.

Zone 20	Estimated Cost FY 2019-20	Assessable EDUs	Applied Assessment per EDU FY 2019-20	Max Assessment per EDU FY 2019-20	Max Assessment per EDU FY 2018-19	Max Assessment Rate Change (%)
Tract 17413-4	\$15,697.95	24	\$507.17	\$507.17	\$497.23	2.0%

Table 3-21

Zone 21 – Assessment Summary

There are eighty-one Single Family Dwelling parcels with an area of 20.63 acres within zone 21. The parcels are deemed to receive proportional special benefit from the maintenance and operation of the improvements.

Zone 21	Estimated Cost FY 2019-20	Assessable EDUs	Applied Assessment per EDU FY 2019-20	Max Assessment per EDU FY 2019-20	Max Assessment per EDU FY 2018-19	Max Assessment Rate Change (%)
Makenna Court	\$13,506.82	81	\$189.16	\$189.17	\$185.46	2.0%

Table 3-22

Zone 22 – Assessment Summary

There is one developed non-residential parcel with an area of 5.33 acres within Zone 22. The developed parcel is deemed to receive proportional special benefit from the maintenance and operation of the improvements.

Zone 22	Estimated Cost FY 2019-20	Assessable EDUs	Applied Assessment per EDU FY 2019-20	Max Assessment per EDU FY 2019-20	Max Assessment per EDU FY 2018-19	Max Assessment Rate Change (%)
California Business Condos	\$6,431.56	32	\$201.97	\$201.97	\$198.01	2.0%

Table 3-23

Zone 23 – Assessment Summary

There are six non-residential parcels with an area of 1.88 acres within Zone 23. Each of these developed parcels is deemed to receive proportional special benefit from the maintenance and operation of the improvements.

Zone 23	Estimated Cost FY 2019-20	Assessable EDUs	Applied Assessment per EDU FY 2019-20	Max Assessment per EDU FY 2019-20	Max Assessment per EDU FY 2018-19	Max Assessment Rate Change (%)
Diamond Professional Plaza	\$5,555.48	6	\$979.24	\$979.24	\$960.04	2.0%

Table 3-24

Zone 24 – Assessment Summary

There are one hundred seven Single Family Dwelling parcels within Zone 24. Each of these developed parcels is deemed to receive proportional special benefit from the maintenance and operation of the improvements.

Zone 24	Estimated Cost FY 2019-20	Assessable EDUs	Applied Assessment per EDU FY 2019-20	Max Assessment per EDU FY 2019-20	Max Assessment per EDU FY 2018-19	Max Assessment Rate Change (%)
La Laguna Development	\$6,752.28	107	\$62.80	\$62.80	\$61.57	2.0%

Table 3-25

Zone 25 – Assessment Summary

There is one developed non-residential parcel with an area of 4.24 acres within Zone 25. The developed parcel is deemed to receive proportional special benefit from the maintenance and operation of the improvements.

Zone 25	Estimated Cost FY 2019-20	Assessable EDUs	Applied Assessment per EDU FY 2019-20	Max Assessment per EDU FY 2019-20	Max Assessment per EDU FY 2018-19	Max Assessment Rate Change (%)
Crane Street	\$2,405.44	25	\$65.31	\$65.31	\$64.03	2.0%

Whereas, the City Council of the City of Lake Elsinore, County of Riverside, State of California, did, pursuant to the provisions of the Landscaping and Lighting Act of 1972 (the "Act"), being Division 15 of the Streets and Highways Code of the State of California, adopted its Resolution Initiating Proceedings for the Annual Levy of Assessments and Ordering the Preparation of an Engineer's Report for Landscaping and Street Lighting Maintenance District No. 1;

Whereas, the Resolution of Initiation directed Spicer Consulting Group, LLC to prepare and file a report presenting plans and specifications describing the general nature, location and extent of the improvements to be maintained, an estimate of the costs of the proposed improvements, including incidental costs and expenses for the referenced Fiscal Year, a diagram of the District the boundaries of any zones within the District and the lines and dimensions of each lot or parcel of land within the District, and an assessment of the estimated costs;

Now Therefore, the following assessment is made to cover the portion of the estimated costs of maintenance, operation and servicing of said improvements to be paid by the assessable real property within the District in proportion to the estimated benefits to be received:

Table 3-26
Summary of Assessments

Description	Budgeted for FY 2019-20
Total Costs	\$580,094
Surplus / (Deficit)	\$79,270
City Contribution	(\$13,434)
Total Assessment	\$645,930

Table 3-27
Summary of Assessments by Zone

Zone	Fiscal Year 2019-20	Zone	Fiscal Year 2019-20	Zone	Fiscal Year 2019-20
1	\$17,700	10	\$0	19	\$6,594
2	\$10,601	11	\$247,638	20	\$12,294
3	\$17,188	12	\$0	21	\$15,322
4	\$62,967	13	\$0	22	\$6,459
5	\$94,623	14	\$18,255	23	\$5,582
6	\$11,049	15	\$13,257	24	\$6,720
7	\$67,298	16	\$8,629	25	\$1,661
8	\$1,334	17	\$6,738		
9	\$0	18	\$14,023		
Total Assessment					\$645,930

Table 3-28
Proposed Assessments

A system of zones, encompassing both street lighting and street landscaping levels of service, has been developed. These zones, combined with an assigned land use based on the County-assigned use code for each parcel, have been used as the methodology for spreading the assessments to each parcel within the City.

Zone		Fiscal Year	% Increase	Maximum Assessment	Actual Assessment	% of Maximum
Zone 1		2018-19	2.0%	\$130.48	\$130.46	100%
		2019-20	2.0%	\$133.09	\$133.08	100%
Zone 2		2018-19	2.0%	\$207.87	\$207.86	100%
		2019-20	2.0%	\$212.03	\$212.02	100%
Zone 3		2018-19	2.0%	\$581.09	\$581.08	100%
		2019-20	2.0%	\$592.72	\$592.70	100%
Zone 4	Landscape & Street Lighting	2018-19	2.0%	\$100.38	\$100.36	100%
		2019-20	2.0%	\$102.39	\$102.38	100%
	Park - Development	2018-19	2.0%	\$110.56	\$110.56	100%
		2019-20	2.0%	\$112.77	\$112.76	100%
	Park - Service	2018-19	2.0%	\$79.68	\$79.68	100%
		2019-20	2.0%	\$81.28	\$81.26	100%
Zone 5	Phase 1	2018-19	2.0%	\$82.03	\$82.02	100%
		2019-20	2.0%	\$83.67	\$83.66	100%
	Phase 2	2018-19	2.0%	\$101.45	\$101.44	100%
		2019-20	2.0%	\$103.48	\$103.46	100%
Zone 6		2018-19	2.0%	\$110.54	\$110.54	100%
		2019-20	2.0%	\$112.75	\$112.74	100%
Zone 7	SFD	2018-19	2.0%	\$81.82	\$81.80	100%
		2019-20	2.0%	\$83.45	\$83.44	100%
	Park	2018-19	2.0%	\$81.82	\$81.80	100%
		2019-20	2.0%	\$83.45	\$83.44	100%
	Vacant	2018-19	2.0%	\$81.82	\$81.80	100%
		2019-20	2.0%	\$83.45	\$83.45	100%
Zone 8		2018-19	2.0%	\$9.29	\$9.28	100%
		2019-20	2.0%	\$9.48	\$9.46	100%
Zone 9		2018-19	0.0%	\$100.88	\$0.00	0%
		2019-20	0.0%	\$102.89	\$0.00	0%
Zone 10		2018-19	0.0%	\$78.64	\$0.00	0%
		2019-20	0.0%	\$80.22	\$0.00	0%
Zone 11	Street Lighting 1 (Improved)	2018-19	2.0%	\$96.92	\$96.92	100%
		2019-20	2.0%	\$98.86	\$98.86	100%
	Landscaping (Not Improved)	2018-19	2.0%	\$82.42	\$82.42	100%
		2019-20	2.0%	\$84.07	\$84.07	100%
	Street Lighting 2 (Undeveloped)	2018-19	2.0%	\$96.92	\$96.92	100%
		2019-20	2.0%	\$98.86	\$98.86	100%
Zone 12	Landscaping	2018-19	0.0%	\$530.52	\$0.00	0%
		2019-20	0.0%	\$541.13	\$0.00	0%
	Street Lighting	2018-19	0.0%	\$90.54	\$0.00	0%
		2019-20	0.0%	\$92.35	\$0.00	0%

Zone		Fiscal Year	% Increase	Maximum Assessment	Actual Assessment	% of Maximum
Zone 13	Landscaping	2018-19	0.0%	\$98.85	\$0.00	0%
		2019-20	0.0%	\$100.83	\$0.00	0%
	Street Lighting	2018-19	0.0%	\$34.34	\$0.00	0%
		2019-20	0.0%	\$35.03	\$0.00	0%
Zone 14		2018-19	2.0%	\$94.21	\$94.20	100%
		2019-20	2.0%	\$96.09	\$96.08	100%
Zone 15	Landscaping	2018-19	2.0%	\$140.97	\$140.96	100%
		2019-20	2.0%	\$143.79	\$143.78	100%
	Street Lighting	2018-19	2.0%	\$32.35	\$32.34	100%
		2019-20	2.0%	\$32.99	\$32.98	100%
Zone 16		2018-19	2.0%	\$24.03	\$24.02	100%
		2019-20	2.0%	\$24.51	\$24.51	100%
Zone 17		2018-19	2.0%	\$110.11	\$110.10	100%
		2019-20	2.0%	\$112.31	\$112.30	100%
Zone 18		2018-19	2.0%	\$146.26	\$146.24	100%
		2019-20	2.0%	\$149.18	\$149.18	100%
Zone 19		2018-19	2.0%	\$61.57	\$61.56	100%
		2019-20	2.0%	\$62.80	\$62.80	100%
Zone 20		2018-19	2.0%	\$497.23	\$497.22	100%
		2019-20	2.0%	\$507.17	\$507.17	100%
Zone 21	Landscaping	2018-19	0.0%	\$83.29	\$83.28	100%
		2019-20	2.0%	\$84.96	\$84.96	100%
	Street Lighting	2018-19	0.0%	\$102.17	\$102.16	100%
		2019-20	2.0%	\$104.21	\$104.20	100%
Zone 22		2018-19	2.0%	\$198.01	\$198.00	100%
		2019-20	2.0%	\$201.97	\$201.97	100%
Zone 23		2018-19	2.0%	\$960.04	\$960.02	100%
		2019-20	2.0%	\$979.24	\$979.24	100%
Zone 24		2018-19	2.0%	\$61.57	\$61.56	100%
		2019-20	2.0%	\$62.80	\$62.80	100%
Zone 25		2018-19	2.0%	\$64.03	\$64.02	100%
		2019-20	2.0%	\$65.31	\$65.31	100%

Administration

It is recognized that using the information from the Riverside County Assessor's secured property tax roll as of July 1 each year as the primary source for the assessment formula may lead to circumstances and errors that do not fit the intent of this program when dealing with specific parcels.

Where such circumstances are discovered, either by the persons administering this program or by the owners of the properties affected, such circumstances shall be reported to the Director of Administrative Services, who may make such final corrections or adjustments as are consistent with the concept, intent and parameters of the programs set forth herein.

Executed this _____ day of _____ 2019.



FRANCISCO MARTINEZ JR
PROFESSIONAL CIVIL ENGINEER NO. 84640
ENGINEER OF WORK
CITY OF LAKE ELSINORE
STATE OF CALIFORNIA

I HEREBY CERTIFY that the enclosed Engineer's Report, together with the Assessment Roll and Assessment Diagrams thereto attached, was filed with me on the _____ day of _____, 2019, by adoption of Resolution No. _____ by City Council.

CITY CLERK
CITY OF LAKE ELSINORE
STATE OF CALIFORNIA

I HEREBY CERTIFY that the enclosed Engineer's Report, together with the Assessment Roll and Assessment Diagrams thereto attached, was approved and confirmed by the City Council of the City of Lake Elsinore, California on the _____ day of _____, 2019.

CITY CLERK
CITY OF LAKE ELSINORE
STATE OF CALIFORNIA

The actual assessment and the amount of the assessment for the Fiscal Year 2019-20 apportioned to each parcel as shown on the latest equalized roll at the County Assessor's office are listed in Appendix A of this Report. The description of each lot or parcel is part of the records of the County Assessor of the County of Riverside and such records are, by reference, made part of this Report.

The boundaries of the District are completely within the boundaries of the City of Lake Elsinore. The District Diagram, which incorporates each of the twenty-five (25) benefit zones for Fiscal Year 2019-20, is on file in the Office of the City Clerk of the City of Lake Elsinore and in Appendix B of this Report. The lines and dimensions of each lot or parcel within the District are those lines and dimensions shown on the maps of the Riverside County Assessor, for the year when this Report was prepared, and are incorporated by reference herein and made part of this Report

APPENDIX A

Assessment Roll



SPICER CONSULTING
G R O U P

Assessment Roll

68-8751 - LMD 1 - Zone 1

Fiscal Year 2019-20



APN	Levy	APN	Levy	APN	Levy
363750001	\$133.08	363760012	\$133.08	363770009	\$133.08
363750002	\$133.08	363760013	\$133.08	363770010	\$133.08
363750003	\$133.08	363760014	\$133.08	363770011	\$133.08
363751001	\$133.08	363760015	\$133.08	363770012	\$133.08
363751002	\$133.08	363760016	\$133.08	363770013	\$133.08
363751003	\$133.08	363760017	\$133.08	363770014	\$133.08
363751004	\$133.08	363760018	\$133.08	363770015	\$133.08
363751005	\$133.08	363760019	\$133.08	363770016	\$133.08
363751006	\$133.08	363760020	\$133.08	363770017	\$133.08
363751007	\$133.08	363760021	\$133.08	363770018	\$133.08
363751008	\$133.08	363760022	\$133.08	363770019	\$133.08
363751009	\$133.08	363760023	\$133.08	363770020	\$133.08
363751010	\$133.08	363760024	\$133.08	363770021	\$133.08
363751011	\$133.08	363760025	\$133.08	363780001	\$133.08
363751012	\$133.08	363760026	\$133.08	363780002	\$133.08
363751013	\$133.08	363760027	\$133.08	363781001	\$133.08
363751014	\$133.08	363760028	\$133.08	363781002	\$133.08
363751015	\$133.08	363760029	\$133.08	363781003	\$133.08
363751016	\$133.08	363760030	\$133.08	363781004	\$133.08
363751017	\$133.08	363760031	\$133.08	363781005	\$133.08
363751018	\$133.08	363760032	\$133.08	363781006	\$133.08
363751019	\$133.08	363760033	\$133.08	363781007	\$133.08
363751020	\$133.08	363760034	\$133.08	363781008	\$133.08
363751021	\$133.08	363760035	\$133.08	363781009	\$133.08
363751022	\$133.08	363760036	\$133.08	363781010	\$133.08
363751023	\$133.08	363760037	\$133.08	363781011	\$133.08
363751024	\$133.08	363760038	\$133.08	363781012	\$133.08
363751025	\$133.08	363760039	\$133.08	363781013	\$133.08
363751026	\$133.08	363760040	\$133.08	363781014	\$133.08
363751027	\$133.08	363760041	\$133.08	363781015	\$133.08
363751028	\$133.08	363761001	\$133.08	363781016	\$133.08
363751029	\$133.08	363761002	\$133.08	363781017	\$133.08
363760001	\$133.08	363761003	\$133.08	363781018	\$133.08
363760002	\$133.08	363761004	\$133.08	363781019	\$133.08
363760003	\$133.08	363761005	\$133.08	363781020	\$133.08
363760004	\$133.08	363770001	\$133.08	363781021	\$133.08
363760005	\$133.08	363770002	\$133.08	363781022	\$133.08
363760006	\$133.08	363770003	\$133.08	363781023	\$133.08
363760007	\$133.08	363770004	\$133.08	363781024	\$133.08
363760008	\$133.08	363770005	\$133.08	363781025	\$133.08
363760009	\$133.08	363770006	\$133.08	363781026	\$133.08
363760010	\$133.08	363770007	\$133.08	363781027	\$133.08
363760011	\$133.08	363770008	\$133.08	363781028	\$133.08

Assessment Roll

68-8751 - LMD 1 - Zone 1

Fiscal Year 2019-20



APN	Levy	APN	Levy	APN	Levy
363781029	\$133.08	363781031	\$133.08	363781032	\$133.08
363781030	\$133.08				
Totals		Parcels	133	Levy	\$17,699.64

Assessment Roll

68-8752 - LMD 1 - Zone 2

Fiscal Year 2019-20



APN	Levy	APN	Levy	APN	Levy
379460001	\$212.02	379460018	\$212.02	379460035	\$212.02
379460002	\$212.02	379460019	\$212.02	379460036	\$212.02
379460003	\$212.02	379460020	\$212.02	379461001	\$212.02
379460004	\$212.02	379460021	\$212.02	379461002	\$212.02
379460005	\$212.02	379460022	\$212.02	379461003	\$212.02
379460006	\$212.02	379460023	\$212.02	379461004	\$212.02
379460007	\$212.02	379460024	\$212.02	379461005	\$212.02
379460008	\$212.02	379460025	\$212.02	379461006	\$212.02
379460009	\$212.02	379460026	\$212.02	379461007	\$212.02
379460010	\$212.02	379460027	\$212.02	379461008	\$212.02
379460011	\$212.02	379460028	\$212.02	379461009	\$212.02
379460012	\$212.02	379460029	\$212.02	379461010	\$212.02
379460013	\$212.02	379460030	\$212.02	379461011	\$212.02
379460014	\$212.02	379460031	\$212.02	379461012	\$212.02
379460015	\$212.02	379460032	\$212.02	379461013	\$212.02
379460016	\$212.02	379460033	\$212.02	379461014	\$212.02
379460017	\$212.02	379460034	\$212.02		
Totals		Parcels 50		Levy \$10,601.00	

Assessment Roll

68-8753 - LMD 1 - Zone 3

Fiscal Year 2019-20



APN	Levy	APN	Levy	APN	Levy
373205048	\$592.70	373206002	\$592.70	373207006	\$592.70
373205049	\$592.70	373206003	\$592.70	373207007	\$592.70
373205050	\$592.70	373206004	\$592.70	373207008	\$592.70
373205051	\$592.70	373206005	\$592.70	373207009	\$592.70
373205052	\$592.70	373206006	\$592.70	373207010	\$592.70
373205053	\$592.70	373207001	\$592.70	373207011	\$592.70
373205054	\$592.70	373207002	\$592.70	373207012	\$592.70
373205055	\$592.70	373207003	\$592.70	373207013	\$592.70
373205056	\$592.70	373207004	\$592.70	373207014	\$592.70
373206001	\$592.70	373207005	\$592.70		
Totals		Parcels 29		Levy	\$17,188.30

Assessment Roll

68-8754 - LMD 1 - Zone 4

Fiscal Year 2019-20



APN	Levy	APN	Levy	APN	Levy
370412021	\$215.14	370521014	\$296.42	370523013	\$296.42
370415006	\$215.14	370521015	\$296.42	370523014	\$296.42
370415007	\$215.14	370521016	\$296.42	370523015	\$296.42
370415008	\$215.14	370521017	\$296.42	370523016	\$296.42
370415009	\$215.14	370521018	\$296.42	370523017	\$296.42
370415010	\$215.14	370521019	\$296.42	370523018	\$296.42
370415011	\$215.14	370521020	\$296.42	370523019	\$296.42
370415012	\$215.14	370521021	\$296.42	370523020	\$296.42
370415013	\$215.14	370521022	\$296.42	370523021	\$296.42
370415014	\$215.14	370521023	\$296.42	370523022	\$296.42
370415015	\$215.14	370521024	\$296.42	370523023	\$296.42
370520001	\$296.42	370521025	\$296.42	370523024	\$296.42
370520002	\$296.42	370521026	\$296.42	370530001	\$296.42
370520003	\$296.42	370521027	\$296.42	370530002	\$296.42
370520004	\$296.42	370521028	\$296.42	370530003	\$296.42
370520005	\$296.42	370521030	\$296.42	370530004	\$296.42
370520006	\$296.42	370521036	\$296.42	370530005	\$296.42
370520007	\$296.42	370522001	\$296.42	370530006	\$296.42
370520008	\$296.42	370522002	\$296.42	370530007	\$296.42
370520009	\$296.42	370522003	\$296.42	370530008	\$296.42
370520010	\$296.42	370522004	\$296.42	370530009	\$296.42
370520011	\$296.42	370522005	\$296.42	370530010	\$296.42
370520012	\$296.42	370522006	\$296.42	370530011	\$296.42
370520013	\$296.42	370522007	\$296.42	370530012	\$296.42
370520014	\$296.42	370522008	\$296.42	370530013	\$296.42
370520015	\$296.42	370522009	\$296.42	370530014	\$296.42
370520016	\$296.42	370522010	\$296.42	370530015	\$296.42
370520017	\$296.42	370522011	\$296.42	370530016	\$296.42
370520018	\$296.42	370522012	\$296.42	370530017	\$296.42
370520019	\$296.42	370522013	\$296.42	370530018	\$296.42
370520020	\$296.42	370522014	\$296.42	370530019	\$296.42
370520021	\$296.42	370523001	\$296.42	370530020	\$296.42
370521001	\$296.42	370523002	\$296.42	370530021	\$296.42
370521002	\$296.42	370523003	\$296.42	370530022	\$296.42
370521003	\$296.42	370523004	\$296.42	370530023	\$296.42
370521004	\$296.42	370523005	\$296.42	370530024	\$296.42
370521005	\$296.42	370523006	\$296.42	370530025	\$296.42
370521006	\$296.42	370523007	\$296.42	370530026	\$296.42
370521007	\$296.42	370523008	\$296.42	370530027	\$296.42
370521010	\$296.42	370523009	\$296.42	370530028	\$296.42
370521011	\$296.42	370523010	\$296.42	370530029	\$296.42
370521012	\$296.42	370523011	\$296.42	370530030	\$296.42
370521013	\$296.42	370523012	\$296.42	370530031	\$296.42

Assessment Roll

68-8754 - LMD 1 - Zone 4

Fiscal Year 2019-20



APN	Levy	APN	Levy	APN	Levy
370530032	\$296.42	370530067	\$215.14	370541001	\$215.14
370530033	\$296.42	370531001	\$296.42	370541002	\$215.14
370530034	\$296.42	370531002	\$296.42	370541003	\$215.14
370530035	\$296.42	370531003	\$296.42	370541004	\$215.14
370530036	\$296.42	370531004	\$296.42	370541005	\$215.14
370530037	\$296.42	370531005	\$296.42	370541006	\$215.14
370530038	\$296.42	370531006	\$296.42	370541007	\$215.14
370530039	\$296.42	370531007	\$296.42	370541008	\$215.14
370530040	\$296.42	370531008	\$296.42	370541009	\$215.14
370530041	\$296.42	370531009	\$296.42	370541010	\$215.14
370530042	\$296.42	370531010	\$296.42	370541011	\$215.14
370530043	\$296.42	370531011	\$296.42	370541012	\$215.14
370530044	\$296.42	370531012	\$296.42	370541013	\$215.14
370530045	\$296.42	370531013	\$296.42	370541014	\$215.14
370530046	\$296.42	370531014	\$296.42	370541015	\$215.14
370530047	\$296.42	370531015	\$296.42	370541016	\$215.14
370530048	\$296.42	370531016	\$296.42	370541017	\$215.14
370530049	\$296.42	370540001	\$215.14	370541018	\$215.14
370530050	\$296.42	370540002	\$215.14	370541019	\$215.14
370530051	\$296.42	370540003	\$215.14	370541020	\$215.14
370530052	\$296.42	370540004	\$215.14	370541021	\$215.14
370530053	\$296.42	370540005	\$215.14	370541022	\$215.14
370530054	\$296.42	370540006	\$215.14	370541023	\$215.14
370530055	\$296.42	370540007	\$215.14	370541024	\$215.14
370530056	\$215.14	370540008	\$215.14	370541025	\$215.14
370530057	\$215.14	370540009	\$215.14	370541026	\$215.14
370530058	\$215.14	370540010	\$215.14	370541027	\$215.14
370530059	\$215.14	370540011	\$215.14	370541028	\$215.14
370530060	\$215.14	370540012	\$215.14	370541029	\$215.14
370530061	\$215.14	370540013	\$215.14	370541030	\$215.14
370530062	\$215.14	370540014	\$215.14	370541031	\$215.14
370530063	\$215.14	370540015	\$215.14	370541032	\$215.14
370530064	\$215.14	370540016	\$215.14	370541033	\$215.14
370530065	\$215.14	370540017	\$215.14	370541034	\$215.14
370530066	\$215.14	370540018	\$215.14		

Totals

Parcels 233

Levy \$62,969.86

Assessment Roll

68-8755 - LMD 1 - Zone 5

Fiscal Year 2019-20



APN	Levy	APN	Levy	APN	Levy
347440001	\$83.66	347440044	\$83.66	347451004	\$83.66
347440002	\$83.66	347440045	\$83.66	347451005	\$83.66
347440003	\$83.66	347440046	\$83.66	347452001	\$83.66
347440004	\$83.66	347440047	\$83.66	347452002	\$83.66
347440005	\$83.66	347440048	\$83.66	347452003	\$83.66
347440006	\$83.66	347440049	\$83.66	347452004	\$83.66
347440007	\$83.66	347440050	\$83.66	347452005	\$83.66
347440008	\$83.66	347440051	\$83.66	347452006	\$83.66
347440009	\$83.66	347450001	\$83.66	347452007	\$83.66
347440010	\$83.66	347450002	\$83.66	347452008	\$83.66
347440011	\$83.66	347450003	\$83.66	347452009	\$83.66
347440012	\$83.66	347450004	\$83.66	347452010	\$83.66
347440013	\$83.66	347450005	\$83.66	347452011	\$83.66
347440014	\$83.66	347450006	\$83.66	347452012	\$83.66
347440015	\$83.66	347450007	\$83.66	347453001	\$83.66
347440016	\$83.66	347450008	\$83.66	347453002	\$83.66
347440017	\$83.66	347450009	\$83.66	347453003	\$83.66
347440018	\$83.66	347450010	\$83.66	347453004	\$83.66
347440019	\$83.66	347450011	\$83.66	347453005	\$83.66
347440020	\$83.66	347450012	\$83.66	347453006	\$83.66
347440021	\$83.66	347450013	\$83.66	347453007	\$83.66
347440022	\$83.66	347450014	\$83.66	347453008	\$83.66
347440023	\$83.66	347450015	\$83.66	347453009	\$83.66
347440024	\$83.66	347450016	\$83.66	347453010	\$83.66
347440025	\$83.66	347450017	\$83.66	347453011	\$83.66
347440026	\$83.66	347450018	\$83.66	347453012	\$83.66
347440027	\$83.66	347450019	\$83.66	347453013	\$83.66
347440028	\$83.66	347450020	\$83.66	347453014	\$83.66
347440029	\$83.66	347450021	\$83.66	347453015	\$83.66
347440030	\$83.66	347450022	\$83.66	347453016	\$83.66
347440031	\$83.66	347450023	\$83.66	347453017	\$83.66
347440032	\$83.66	347450024	\$83.66	347453018	\$83.66
347440033	\$83.66	347450025	\$83.66	347453019	\$83.66
347440034	\$83.66	347450026	\$83.66	347453020	\$83.66
347440035	\$83.66	347450027	\$83.66	347453021	\$83.66
347440036	\$83.66	347450028	\$83.66	347453022	\$83.66
347440037	\$83.66	347450029	\$83.66	347453023	\$83.66
347440038	\$83.66	347450030	\$83.66	347453024	\$83.66
347440039	\$83.66	347450031	\$83.66	347453025	\$83.66
347440040	\$83.66	347450032	\$83.66	347453026	\$83.66
347440041	\$83.66	347451001	\$83.66	347453027	\$83.66
347440042	\$83.66	347451002	\$83.66	347453028	\$83.66
347440043	\$83.66	347451003	\$83.66	347460001	\$83.66

Assessment Roll

68-8755 - LMD 1 - Zone 5

Fiscal Year 2019-20



APN	Levy	APN	Levy	APN	Levy
347460002	\$83.66	347462004	\$83.66	347470030	\$83.66
347460003	\$83.66	347462005	\$83.66	347470031	\$83.66
347460004	\$83.66	347462006	\$83.66	347470032	\$83.66
347460005	\$83.66	347462007	\$83.66	347470033	\$83.66
347460006	\$83.66	347462008	\$83.66	347470034	\$83.66
347460007	\$83.66	347462009	\$83.66	347470035	\$83.66
347460008	\$83.66	347462010	\$83.66	347470036	\$83.66
347460009	\$83.66	347462011	\$83.66	347470037	\$83.66
347460010	\$83.66	347462012	\$83.66	347470038	\$83.66
347460011	\$83.66	347462013	\$83.66	347470039	\$83.66
347460012	\$83.66	347462014	\$83.66	347470040	\$83.66
347460013	\$83.66	347462015	\$83.66	347471001	\$83.66
347460014	\$83.66	347462016	\$83.66	347471002	\$83.66
347460015	\$83.66	347462017	\$83.66	347471003	\$83.66
347460016	\$83.66	347470001	\$83.66	347471004	\$83.66
347460017	\$83.66	347470002	\$83.66	347471005	\$83.66
347460018	\$83.66	347470003	\$83.66	347471006	\$83.66
347460019	\$83.66	347470004	\$83.66	347471007	\$83.66
347460020	\$83.66	347470005	\$83.66	347471008	\$83.66
347460021	\$83.66	347470006	\$83.66	347471009	\$83.66
347460022	\$83.66	347470007	\$83.66	347471010	\$83.66
347460023	\$83.66	347470008	\$83.66	347471011	\$83.66
347460024	\$83.66	347470009	\$83.66	347471012	\$83.66
347460025	\$83.66	347470010	\$83.66	347471013	\$83.66
347460026	\$83.66	347470011	\$83.66	347471014	\$83.66
347460027	\$83.66	347470012	\$83.66	347471015	\$83.66
347460028	\$83.66	347470013	\$83.66	347471016	\$83.66
347460029	\$83.66	347470014	\$83.66	347471017	\$83.66
347460030	\$83.66	347470015	\$83.66	347471018	\$83.66
347460031	\$83.66	347470016	\$83.66	347471019	\$83.66
347460032	\$83.66	347470017	\$83.66	347471020	\$83.66
347460033	\$83.66	347470018	\$83.66	347471021	\$83.66
347460034	\$83.66	347470019	\$83.66	347471022	\$83.66
347460035	\$83.66	347470020	\$83.66	347471023	\$83.66
347461001	\$83.66	347470021	\$83.66	347471024	\$83.66
347461002	\$83.66	347470022	\$83.66	347472001	\$83.66
347461003	\$83.66	347470023	\$83.66	347472002	\$83.66
347461004	\$83.66	347470024	\$83.66	347472003	\$83.66
347461005	\$83.66	347470025	\$83.66	347472004	\$83.66
347461006	\$83.66	347470026	\$83.66	347480001	\$83.66
347462001	\$83.66	347470027	\$83.66	347480002	\$83.66
347462002	\$83.66	347470028	\$83.66	347480003	\$83.66
347462003	\$83.66	347470029	\$83.66	347480004	\$83.66

Assessment Roll

68-8755 - LMD 1 - Zone 5

Fiscal Year 2019-20



APN	Levy	APN	Levy	APN	Levy
347480005	\$83.66	347483005	\$83.66	347493011	\$83.66
347480006	\$83.66	347483006	\$83.66	347493012	\$83.66
347481001	\$83.66	347483007	\$83.66	347493013	\$83.66
347481002	\$83.66	347483008	\$83.66	347493014	\$83.66
347481003	\$83.66	347483009	\$83.66	347493015	\$83.66
347481004	\$83.66	347483010	\$83.66	347493016	\$83.66
347481005	\$83.66	347483011	\$83.66	347493017	\$83.66
347481006	\$83.66	347483012	\$83.66	347493018	\$83.66
347481007	\$83.66	347490001	\$83.66	347494001	\$83.66
347481008	\$83.66	347490002	\$83.66	347494002	\$83.66
347481009	\$83.66	347491001	\$83.66	347494003	\$83.66
347481010	\$83.66	347491002	\$83.66	347494004	\$83.66
347481011	\$83.66	347491003	\$83.66	347494005	\$83.66
347481012	\$83.66	347491004	\$83.66	347494006	\$83.66
347482001	\$83.66	347491005	\$83.66	347494007	\$83.66
347482002	\$83.66	347491006	\$83.66	347494008	\$83.66
347482003	\$83.66	347491007	\$83.66	347494009	\$83.66
347482004	\$83.66	347491008	\$83.66	347494010	\$83.66
347482005	\$83.66	347492001	\$83.66	347494011	\$83.66
347482006	\$83.66	347492002	\$83.66	347494012	\$83.66
347482007	\$83.66	347492003	\$83.66	347494013	\$83.66
347482008	\$83.66	347492004	\$83.66	347494014	\$83.66
347482009	\$83.66	347492005	\$83.66	347494015	\$83.66
347482010	\$83.66	347492006	\$83.66	347494016	\$83.66
347482011	\$83.66	347492007	\$83.66	347494017	\$83.66
347482012	\$83.66	347492008	\$83.66	347494018	\$83.66
347482013	\$83.66	347492009	\$83.66	347494019	\$83.66
347482014	\$83.66	347492010	\$83.66	347494020	\$83.66
347482015	\$83.66	347492011	\$83.66	347494021	\$83.66
347482016	\$83.66	347492012	\$83.66	347494022	\$83.66
347482017	\$83.66	347492013	\$83.66	347494023	\$83.66
347482018	\$83.66	347492014	\$83.66	347494024	\$83.66
347482019	\$83.66	347492015	\$83.66	347494025	\$83.66
347482020	\$83.66	347493001	\$83.66	347494026	\$83.66
347482021	\$83.66	347493002	\$83.66	347494027	\$83.66
347482022	\$83.66	347493003	\$83.66	347494028	\$83.66
347482023	\$83.66	347493004	\$83.66	347500001	\$83.66
347482024	\$83.66	347493005	\$83.66	347500002	\$83.66
347482025	\$83.66	347493006	\$83.66	347500003	\$83.66
347483001	\$83.66	347493007	\$83.66	347500004	\$83.66
347483002	\$83.66	347493008	\$83.66	347500005	\$83.66
347483003	\$83.66	347493009	\$83.66	347500006	\$83.66
347483004	\$83.66	347493010	\$83.66	347500007	\$83.66

Assessment Roll

68-8755 - LMD 1 - Zone 5

Fiscal Year 2019-20



APN	Levy	APN	Levy	APN	Levy
347500008	\$83.66	347511016	\$83.66	347520008	\$83.66
347500009	\$83.66	347511017	\$83.66	347520009	\$83.66
347500010	\$83.66	347511018	\$83.66	347520010	\$83.66
347500011	\$83.66	347511019	\$83.66	347520011	\$83.66
347500012	\$83.66	347511020	\$83.66	347520012	\$83.66
347500013	\$83.66	347511021	\$83.66	347520013	\$83.66
347500014	\$83.66	347511022	\$83.66	347520014	\$83.66
347500015	\$83.66	347511023	\$83.66	347520015	\$83.66
347500016	\$83.66	347511024	\$83.66	347520016	\$83.66
347500017	\$83.66	347511025	\$83.66	347520017	\$83.66
347500018	\$83.66	347511026	\$83.66	347520018	\$83.66
347500019	\$83.66	347511027	\$83.66	347520019	\$83.66
347501001	\$83.66	347511028	\$83.66	347520020	\$83.66
347501002	\$83.66	347511029	\$83.66	347520021	\$83.66
347501003	\$83.66	347511030	\$83.66	347520022	\$83.66
347501004	\$83.66	347511031	\$83.66	347520023	\$83.66
347501005	\$83.66	347511032	\$83.66	347520024	\$83.66
347501006	\$83.66	347511033	\$83.66	347520025	\$83.66
347502001	\$83.66	347511034	\$83.66	347520026	\$83.66
347502002	\$83.66	347511035	\$83.66	347520027	\$83.66
347502003	\$83.66	347511036	\$83.66	347520028	\$83.66
347502004	\$83.66	347511037	\$83.66	347520029	\$83.66
347502005	\$83.66	347511038	\$83.66	347520030	\$83.66
347510001	\$83.66	347511039	\$83.66	347521001	\$83.66
347510002	\$83.66	347511040	\$83.66	347521002	\$83.66
347510003	\$83.66	347511041	\$83.66	347521003	\$83.66
347510004	\$83.66	347511042	\$83.66	347521004	\$83.66
347510005	\$83.66	347512001	\$83.66	347521005	\$83.66
347511001	\$83.66	347512002	\$83.66	347521006	\$83.66
347511002	\$83.66	347512003	\$83.66	347521007	\$83.66
347511003	\$83.66	347512004	\$83.66	347521008	\$83.66
347511004	\$83.66	347512005	\$83.66	347521009	\$83.66
347511005	\$83.66	347512006	\$83.66	347521010	\$83.66
347511006	\$83.66	347512007	\$83.66	347521011	\$83.66
347511007	\$83.66	347512008	\$83.66	347521012	\$83.66
347511008	\$83.66	347512009	\$83.66	347521013	\$83.66
347511009	\$83.66	347520001	\$83.66	349510003	\$103.46
347511010	\$83.66	347520002	\$83.66	349510004	\$103.46
347511011	\$83.66	347520003	\$83.66	349510005	\$103.46
347511012	\$83.66	347520004	\$83.66	349510006	\$103.46
347511013	\$83.66	347520005	\$83.66	349510007	\$103.46
347511014	\$83.66	347520006	\$83.66	349510008	\$103.46
347511015	\$83.66	347520007	\$83.66	349510009	\$103.46

Assessment Roll

68-8755 - LMD 1 - Zone 5

Fiscal Year 2019-20



APN	Levy	APN	Levy	APN	Levy
349510010	\$103.46	349512011	\$103.46	349514007	\$103.46
349510012	\$103.46	349512012	\$103.46	349520001	\$103.46
349510013	\$103.46	349512013	\$103.46	349520002	\$103.46
349511001	\$103.46	349512014	\$103.46	349520003	\$103.46
349511002	\$103.46	349512015	\$103.46	349520004	\$103.46
349511003	\$103.46	349513001	\$103.46	349520005	\$103.46
349511004	\$103.46	349513002	\$103.46	349520006	\$103.46
349511005	\$103.46	349513003	\$103.46	349520007	\$103.46
349511006	\$103.46	349513004	\$103.46	349521001	\$103.46
349511007	\$103.46	349513005	\$103.46	349521002	\$103.46
349511008	\$103.46	349513006	\$103.46	349521003	\$103.46
349511009	\$103.46	349513007	\$103.46	349521004	\$103.46
349511010	\$103.46	349513008	\$103.46	349521005	\$103.46
349511011	\$103.46	349513009	\$103.46	349521006	\$103.46
349511012	\$103.46	349513010	\$103.46	349521007	\$103.46
349511013	\$103.46	349513011	\$103.46	349521008	\$103.46
349511014	\$103.46	349513012	\$103.46	349521009	\$103.46
349511015	\$103.46	349513013	\$103.46	349522001	\$103.46
349511016	\$103.46	349513014	\$103.46	349522002	\$103.46
349511017	\$103.46	349513015	\$103.46	349522003	\$103.46
349511018	\$103.46	349513016	\$103.46	349522004	\$103.46
349511019	\$103.46	349513017	\$103.46	349522005	\$103.46
349511020	\$103.46	349513018	\$103.46	349522006	\$103.46
349511021	\$103.46	349513019	\$103.46	349522007	\$103.46
349511022	\$103.46	349513020	\$103.46	349522008	\$103.46
349511023	\$103.46	349513021	\$103.46	349522009	\$103.46
349511024	\$103.46	349513022	\$103.46	349522010	\$103.46
349511025	\$103.46	349513023	\$103.46	349522011	\$103.46
349511026	\$103.46	349513024	\$103.46	349522012	\$103.46
349511027	\$103.46	349513025	\$103.46	349522013	\$103.46
349511028	\$103.46	349513026	\$103.46	349522014	\$103.46
349511029	\$103.46	349513027	\$103.46	349522015	\$103.46
349511030	\$103.46	349513028	\$103.46	349522016	\$103.46
349512001	\$103.46	349513029	\$103.46	349523001	\$103.46
349512002	\$103.46	349513030	\$103.46	349523002	\$103.46
349512003	\$103.46	349513031	\$103.46	349523003	\$103.46
349512004	\$103.46	349513032	\$103.46	349523004	\$103.46
349512005	\$103.46	349514001	\$103.46	349523005	\$103.46
349512006	\$103.46	349514002	\$103.46	349523006	\$103.46
349512007	\$103.46	349514003	\$103.46	349523007	\$103.46
349512008	\$103.46	349514004	\$103.46	349523008	\$103.46
349512009	\$103.46	349514005	\$103.46	349523009	\$103.46
349512010	\$103.46	349514006	\$103.46	349523010	\$103.46

Assessment Roll

68-8755 - LMD 1 - Zone 5

Fiscal Year 2019-20



APN	Levy	APN	Levy	APN	Levy
349523011	\$103.46	349531003	\$103.46	349541001	\$103.46
349523012	\$103.46	349531004	\$103.46	349541002	\$103.46
349523013	\$103.46	349531005	\$103.46	349541003	\$103.46
349523014	\$103.46	349531006	\$103.46	349541004	\$103.46
349523015	\$103.46	349531007	\$103.46	349541005	\$103.46
349523016	\$103.46	349531008	\$103.46	349541006	\$103.46
349523017	\$103.46	349531009	\$103.46	349541007	\$103.46
349523018	\$103.46	349531010	\$103.46	349541008	\$103.46
349524001	\$103.46	349531011	\$103.46	349541009	\$103.46
349524002	\$103.46	349531012	\$103.46	349541010	\$103.46
349524003	\$103.46	349531013	\$103.46	349541011	\$103.46
349524004	\$103.46	349531014	\$103.46	349541012	\$103.46
349524005	\$103.46	349532001	\$103.46	349541013	\$103.46
349524006	\$103.46	349532002	\$103.46	349541014	\$103.46
349524007	\$103.46	349532003	\$103.46	349541015	\$103.46
349524008	\$103.46	349532004	\$103.46	349541016	\$103.46
349524009	\$103.46	349532005	\$103.46	349541017	\$103.46
349524010	\$103.46	349532006	\$103.46	349541018	\$103.46
349524011	\$103.46	349532007	\$103.46	349541020	\$103.46
349524012	\$103.46	349532008	\$103.46	349541021	\$103.46
349524013	\$103.46	349532009	\$103.46	349541022	\$103.46
349524014	\$103.46	349532010	\$103.46	349541023	\$103.46
349524015	\$103.46	349532011	\$103.46	349541024	\$103.46
349524016	\$103.46	349532012	\$103.46	349541025	\$103.46
349524017	\$103.46	349532013	\$103.46	349541026	\$103.46
349524018	\$103.46	349532014	\$103.46	349541027	\$103.46
349524019	\$103.46	349532015	\$103.46	349541028	\$103.46
349524020	\$103.46	349532016	\$103.46	349541029	\$103.46
349524021	\$103.46	349532017	\$103.46	349541030	\$103.46
349524022	\$103.46	349533001	\$103.46	349541031	\$103.46
349524023	\$103.46	349533002	\$103.46	349541032	\$103.46
349524024	\$103.46	349533003	\$103.46	349541033	\$103.46
349524025	\$103.46	349533004	\$103.46	349541034	\$103.46
349524026	\$103.46	349533005	\$103.46	349542001	\$103.46
349524027	\$103.46	349540001	\$103.46	349542002	\$103.46
349524028	\$103.46	349540002	\$103.46	349542003	\$103.46
349530001	\$103.46	349540003	\$103.46	349542004	\$103.46
349530002	\$103.46	349540004	\$103.46	349542005	\$103.46
349530003	\$103.46	349540005	\$103.46	349542006	\$103.46
349530004	\$103.46	349540008	\$103.46	349542007	\$103.46
349530005	\$103.46	349540009	\$103.46	349542008	\$103.46
349531001	\$103.46	349540010	\$103.46	349542009	\$103.46
349531002	\$103.46	349540011	\$103.46	349542010	\$103.46

Assessment Roll

68-8755 - LMD 1 - Zone 5

Fiscal Year 2019-20



APN	Levy	APN	Levy	APN	Levy
349542011	\$103.46	349551008	\$103.46	349561002	\$103.46
349542012	\$103.46	349551009	\$103.46	349561003	\$103.46
349542013	\$103.46	349551010	\$103.46	349561004	\$103.46
349542014	\$103.46	349551011	\$103.46	349561005	\$103.46
349542015	\$103.46	349551012	\$103.46	349561006	\$103.46
349542016	\$103.46	349551013	\$103.46	349561007	\$103.46
349542017	\$103.46	349551014	\$103.46	349561008	\$103.46
349542018	\$103.46	349551015	\$103.46	349561009	\$103.46
349550001	\$103.46	349551016	\$103.46	349561010	\$103.46
349550002	\$103.46	349551017	\$103.46	349561011	\$103.46
349550003	\$103.46	349560001	\$103.46	349561012	\$103.46
349550004	\$103.46	349560002	\$103.46	349561013	\$103.46
349550005	\$103.46	349560003	\$103.46	349561014	\$103.46
349550006	\$103.46	349560004	\$103.46	349561015	\$103.46
349550007	\$103.46	349560005	\$103.46	349561016	\$103.46
349550008	\$103.46	349560006	\$103.46	349561017	\$103.46
349550009	\$103.46	349560007	\$103.46	349561018	\$103.46
349550010	\$103.46	349560008	\$103.46	349561019	\$103.46
349550011	\$103.46	349560009	\$103.46	349561020	\$103.46
349550012	\$103.46	349560010	\$103.46	349561021	\$103.46
349550013	\$103.46	349560011	\$103.46	349561022	\$103.46
349550014	\$103.46	349560012	\$103.46	349561023	\$103.46
349550015	\$103.46	349560013	\$103.46	349561024	\$103.46
349550016	\$103.46	349560014	\$103.46	349561025	\$103.46
349550017	\$103.46	349560015	\$103.46	349561026	\$103.46
349550018	\$103.46	349560016	\$103.46	349561027	\$103.46
349550019	\$103.46	349560017	\$103.46	349561028	\$103.46
349550020	\$103.46	349560018	\$103.46	349561029	\$103.46
349550021	\$103.46	349560019	\$103.46	349561030	\$103.46
349550022	\$103.46	349560020	\$103.46	349561031	\$103.46
349550023	\$103.46	349560021	\$103.46	349561032	\$103.46
349550024	\$103.46	349560022	\$103.46	349561033	\$103.46
349550025	\$103.46	349560023	\$103.46	349562001	\$103.46
349550026	\$103.46	349560024	\$103.46	349562002	\$103.46
349550027	\$103.46	349560025	\$103.46	349562003	\$103.46
349550028	\$103.46	349560026	\$103.46	349562004	\$103.46
349551001	\$103.46	349560027	\$103.46	349562005	\$103.46
349551002	\$103.46	349560028	\$103.46	349562006	\$103.46
349551003	\$103.46	349560029	\$103.46	349562007	\$103.46
349551004	\$103.46	349560030	\$103.46	349562008	\$103.46
349551005	\$103.46	349560031	\$103.46	349570001	\$103.46
349551006	\$103.46	349560032	\$103.46	349570002	\$103.46
349551007	\$103.46	349561001	\$103.46	349570003	\$103.46

Assessment Roll

68-8755 - LMD 1 - Zone 5

Fiscal Year 2019-20



APN	Levy	APN	Levy	APN	Levy
349570004	\$103.46	349572006	\$103.46	349590007	\$103.46
349570005	\$103.46	349572007	\$103.46	349590008	\$103.46
349570006	\$103.46	349572008	\$103.46	349590009	\$103.46
349570007	\$103.46	349580001	\$103.46	349590010	\$103.46
349570008	\$103.46	349580002	\$103.46	349590011	\$103.46
349570009	\$103.46	349580003	\$103.46	349590012	\$103.46
349570010	\$103.46	349580004	\$103.46	349590013	\$103.46
349570011	\$103.46	349580005	\$103.46	349590014	\$103.46
349570012	\$103.46	349580006	\$103.46	349590015	\$103.46
349570013	\$103.46	349580007	\$103.46	349590016	\$103.46
349570014	\$103.46	349580008	\$103.46	349590017	\$103.46
349570015	\$103.46	349580009	\$103.46	349590018	\$103.46
349570016	\$103.46	349580010	\$103.46	349590019	\$103.46
349570017	\$103.46	349580011	\$103.46	349590020	\$103.46
349570018	\$103.46	349580012	\$103.46	349590021	\$103.46
349571001	\$103.46	349580013	\$103.46	349590022	\$103.46
349571002	\$103.46	349580014	\$103.46	349590023	\$103.46
349571003	\$103.46	349580015	\$103.46	349590024	\$103.46
349571004	\$103.46	349580016	\$103.46	349590025	\$103.46
349571005	\$103.46	349580017	\$103.46	349590026	\$103.46
349571006	\$103.46	349580018	\$103.46	349590027	\$103.46
349571007	\$103.46	349580019	\$103.46	349590028	\$103.46
349571008	\$103.46	349580020	\$103.46	349590029	\$103.46
349571009	\$103.46	349580021	\$103.46	349590030	\$103.46
349571010	\$103.46	349580022	\$103.46	349590031	\$103.46
349571011	\$103.46	349580023	\$103.46	349591001	\$103.46
349571012	\$103.46	349580024	\$103.46	349591002	\$103.46
349571013	\$103.46	349580025	\$103.46	349591003	\$103.46
349571014	\$103.46	349580026	\$103.46	349591004	\$103.46
349571015	\$103.46	349580027	\$103.46	349591005	\$103.46
349571016	\$103.46	349580028	\$103.46	349591006	\$103.46
349571017	\$103.46	349590001	\$103.46	349591007	\$103.46
349572001	\$103.46	349590002	\$103.46	349591008	\$103.46
349572002	\$103.46	349590003	\$103.46	349591009	\$103.46
349572003	\$103.46	349590004	\$103.46	349591010	\$103.46
349572004	\$103.46	349590005	\$103.46		
349572005	\$103.46	349590006	\$103.46		
Totals		Parcels 1,012		Levy \$94,623.32	

Assessment Roll

68-8756 - LMD 1 - Zone 6

Fiscal Year 2019-20



APN	Levy	APN	Levy	APN	Levy
394230001	\$112.74	394231007	\$112.74	394270006	\$112.74
394230002	\$112.74	394231008	\$112.74	394270007	\$112.74
394230003	\$112.74	394231009	\$112.74	394270008	\$112.74
394230004	\$112.74	394231010	\$112.74	394270009	\$112.74
394230005	\$112.74	394231011	\$112.74	394270010	\$112.74
394230006	\$112.74	394231012	\$112.74	394270011	\$112.74
394230007	\$112.74	394231013	\$112.74	394270012	\$112.74
394230008	\$112.74	394231014	\$112.74	394270013	\$112.74
394230009	\$112.74	394231015	\$112.74	394270014	\$112.74
394230010	\$112.74	394231016	\$112.74	394270015	\$112.74
394230011	\$112.74	394231017	\$112.74	394270016	\$112.74
394230012	\$112.74	394231018	\$112.74	394270017	\$112.74
394230013	\$112.74	394231019	\$112.74	394270018	\$112.74
394230014	\$112.74	394231020	\$112.74	394270019	\$112.74
394230015	\$112.74	394231021	\$112.74	394270020	\$112.74
394230016	\$112.74	394232001	\$112.74	394270021	\$112.74
394230017	\$112.74	394232002	\$112.74	394270022	\$112.74
394230018	\$112.74	394232003	\$112.74	394270023	\$112.74
394230019	\$112.74	394232004	\$112.74	394270024	\$112.74
394230020	\$112.74	394232006	\$112.74	394270025	\$112.74
394230021	\$112.74	394232007	\$112.74	394270026	\$112.74
394230022	\$112.74	394232008	\$112.74	394270027	\$112.74
394230023	\$112.74	394232009	\$112.74	394270028	\$112.74
394230024	\$112.74	394232010	\$112.74	394270029	\$112.74
394230025	\$112.74	394232011	\$112.74	394270030	\$112.74
394230026	\$112.74	394232012	\$112.74	394270031	\$112.74
394230027	\$112.74	394232013	\$112.74	394270032	\$112.74
394231001	\$112.74	394232014	\$112.74	394270033	\$112.74
394231002	\$112.74	394270001	\$112.74	394270034	\$112.74
394231003	\$112.74	394270002	\$112.74	394270035	\$112.74
394231004	\$112.74	394270003	\$112.74	394270036	\$112.74
394231005	\$112.74	394270004	\$112.74	394270037	\$112.74
394231006	\$112.74	394270005	\$112.74		

Totals

Parcels 98

Levy \$11,048.52

Assessment Roll

68-8757 - LMD 1 - Zone 7

Fiscal Year 2019-20



APN	Levy	APN	Levy	APN	Levy
389020048	\$1,310.58	389681018	\$83.44	389691027	\$83.44
389090015	\$17,324.22	389681019	\$83.44	389691028	\$83.44
389121001	\$336.72	389681020	\$83.44	389691029	\$83.44
389121002	\$53.82	389681021	\$83.44	389691030	\$83.44
389121003	\$361.74	389681022	\$83.44	389691031	\$83.44
389122001	\$85.10	389681028	\$83.44	389691032	\$83.44
389122003	\$45.06	389690001	\$83.44	389691033	\$83.44
389122005	\$80.10	389690002	\$83.44	389691034	\$83.44
389122007	\$78.86	389690003	\$83.44	389691035	\$83.44
389122010	\$148.94	389690004	\$83.44	389691036	\$83.44
389680001	\$83.44	389690005	\$83.44	389691037	\$83.44
389680002	\$83.44	389690006	\$83.44	389691038	\$83.44
389680003	\$83.44	389690007	\$83.44	389691039	\$83.44
389680004	\$83.44	389690008	\$83.44	389691040	\$83.44
389680005	\$83.44	389690009	\$83.44	389691041	\$83.44
389680006	\$83.44	389690010	\$83.44	389691042	\$83.44
389680007	\$83.44	389690011	\$83.44	389691043	\$83.44
389680008	\$83.44	389691001	\$83.44	389691044	\$83.44
389680009	\$83.44	389691002	\$83.44	389691045	\$83.44
389680010	\$83.44	389691003	\$83.44	389691046	\$83.44
389680011	\$83.44	389691004	\$83.44	389691047	\$83.44
389680012	\$83.44	389691005	\$83.44	389691048	\$83.44
389680013	\$83.44	389691006	\$83.44	389691049	\$83.44
389680014	\$83.44	389691007	\$83.44	389691050	\$83.44
389680015	\$83.44	389691008	\$83.44	389691051	\$83.44
389680016	\$83.44	389691009	\$83.44	389691052	\$83.44
389681001	\$83.44	389691010	\$83.44	389691053	\$83.44
389681002	\$83.44	389691011	\$83.44	389691054	\$83.44
389681003	\$83.44	389691012	\$83.44	389700001	\$83.44
389681004	\$83.44	389691013	\$83.44	389700002	\$83.44
389681005	\$83.44	389691014	\$83.44	389700003	\$83.44
389681006	\$83.44	389691015	\$83.44	389700004	\$83.44
389681007	\$83.44	389691016	\$83.44	389700005	\$83.44
389681008	\$83.44	389691017	\$83.44	389700006	\$83.44
389681009	\$83.44	389691018	\$83.44	389700007	\$83.44
389681010	\$83.44	389691019	\$83.44	389700008	\$83.44
389681011	\$83.44	389691020	\$83.44	389700009	\$83.44
389681012	\$83.44	389691021	\$83.44	389700010	\$83.44
389681013	\$83.44	389691022	\$83.44	389700011	\$83.44
389681014	\$83.44	389691023	\$83.44	389700012	\$83.44
389681015	\$83.44	389691024	\$83.44	389700013	\$83.44
389681016	\$83.44	389691025	\$83.44	389700014	\$83.44
389681017	\$83.44	389691026	\$83.44	389700015	\$83.44

Assessment Roll

68-8757 - LMD 1 - Zone 7

Fiscal Year 2019-20



APN	Levy	APN	Levy	APN	Levy
389700016	\$83.44	389710007	\$83.44	389712003	\$83.44
389700017	\$83.44	389710008	\$83.44	389712004	\$83.44
389701001	\$83.44	389710009	\$83.44	389712005	\$83.44
389701002	\$83.44	389710010	\$83.44	389712006	\$83.44
389701003	\$83.44	389711001	\$83.44	389712007	\$83.44
389701004	\$83.44	389711002	\$83.44	389712008	\$83.44
389701005	\$83.44	389711003	\$83.44	389712009	\$83.44
389701006	\$83.44	389711004	\$83.44	389712010	\$83.44
389701007	\$83.44	389711005	\$83.44	389712011	\$83.44
389701008	\$83.44	389711006	\$83.44	389712012	\$83.44
389701009	\$83.44	389711007	\$83.44	389712013	\$83.44
389701010	\$83.44	389711008	\$83.44	389712014	\$83.44
389701011	\$83.44	389711009	\$83.44	389712015	\$83.44
389701012	\$83.44	389711010	\$83.44	389712016	\$83.44
389701013	\$83.44	389711011	\$83.44	389712017	\$83.44
389701014	\$83.44	389711012	\$83.44	389720001	\$83.44
389701015	\$83.44	389711013	\$83.44	389720002	\$83.44
389701016	\$83.44	389711014	\$83.44	389720003	\$83.44
389701017	\$83.44	389711015	\$83.44	389720004	\$83.44
389701018	\$83.44	389711016	\$83.44	389720005	\$83.44
389701019	\$83.44	389711017	\$83.44	389720008	\$83.44
389701020	\$83.44	389711018	\$83.44	389720009	\$83.44
389701021	\$83.44	389711019	\$83.44	389720010	\$83.44
389701022	\$83.44	389711020	\$83.44	389720011	\$83.44
389701023	\$83.44	389711021	\$83.44	389720012	\$83.44
389701024	\$83.44	389711022	\$83.44	389720013	\$83.44
389701025	\$83.44	389711023	\$83.44	389720014	\$83.44
389701026	\$83.44	389711024	\$83.44	389720015	\$83.44
389701027	\$83.44	389711025	\$83.44	389720016	\$83.44
389701028	\$83.44	389711026	\$83.44	389720017	\$83.44
389701029	\$83.44	389711027	\$83.44	389720018	\$83.44
389701030	\$83.44	389711028	\$83.44	389720019	\$83.44
389701031	\$83.44	389711029	\$83.44	389720020	\$83.44
389701032	\$83.44	389711030	\$83.44	389720021	\$83.44
389701033	\$83.44	389711031	\$83.44	389720022	\$83.44
389701034	\$83.44	389711032	\$83.44	389720023	\$83.44
389701035	\$83.44	389711033	\$83.44	389720026	\$83.44
389710001	\$83.44	389711034	\$83.44	389720027	\$83.44
389710002	\$83.44	389711035	\$83.44	389720028	\$83.44
389710003	\$83.44	389711036	\$83.44	389720029	\$83.44
389710004	\$83.44	389711037	\$83.44	389720030	\$83.44
389710005	\$83.44	389712001	\$83.44	389720031	\$83.44
389710006	\$83.44	389712002	\$83.44	389720032	\$83.44

Assessment Roll

68-8757 - LMD 1 - Zone 7

Fiscal Year 2019-20



APN	Levy	APN	Levy	APN	Levy
389720033	\$83.44	389730009	\$83.44	389731021	\$83.44
389720034	\$83.44	389730010	\$83.44	389731022	\$83.44
389720035	\$83.44	389730011	\$83.44	389731023	\$83.44
389720036	\$83.44	389730012	\$83.44	389731024	\$83.44
389720037	\$83.44	389730013	\$83.44	389731025	\$83.44
389720038	\$83.44	389730014	\$83.44	389731026	\$83.44
389720039	\$83.44	389730015	\$83.44	389731027	\$83.44
389720040	\$83.44	389730016	\$83.44	389740001	\$83.44
389720041	\$83.44	389730017	\$83.44	389740002	\$83.44
389720042	\$83.44	389730018	\$83.44	389740003	\$83.44
389720043	\$83.44	389730019	\$83.44	389740004	\$83.44
389720044	\$83.44	389730020	\$83.44	389740005	\$83.44
389720045	\$83.44	389730021	\$83.44	389740006	\$83.44
389720046	\$83.44	389730022	\$83.44	389740007	\$83.44
389720047	\$83.44	389730023	\$83.44	389740008	\$83.44
389720048	\$83.44	389730024	\$83.44	389740009	\$83.44
389720049	\$83.44	389730025	\$83.44	389740010	\$83.44
389720050	\$83.44	389730026	\$83.44	389740011	\$83.44
389720053	\$83.44	389730027	\$83.44	389740012	\$83.44
389720054	\$83.44	389730028	\$83.44	389740013	\$83.44
389720055	\$83.44	389730029	\$83.44	389740014	\$83.44
389720056	\$83.44	389730030	\$83.44	389740015	\$83.44
389721001	\$83.44	389730031	\$83.44	389740016	\$83.44
389721002	\$83.44	389731001	\$83.44	389740017	\$83.44
389721003	\$83.44	389731002	\$83.44	389740018	\$83.44
389721004	\$83.44	389731003	\$83.44	389740019	\$83.44
389721005	\$83.44	389731004	\$83.44	389740020	\$83.44
389721006	\$83.44	389731005	\$83.44	389740021	\$83.44
389721007	\$83.44	389731006	\$83.44	389740022	\$83.44
389721008	\$83.44	389731007	\$83.44	389740023	\$83.44
389721009	\$83.44	389731008	\$83.44	389740024	\$83.44
389721010	\$83.44	389731009	\$83.44	389740025	\$83.44
389721011	\$83.44	389731010	\$83.44	389740026	\$83.44
389721012	\$83.44	389731011	\$83.44	389740027	\$83.44
389721013	\$83.44	389731012	\$83.44	389740028	\$83.44
389730001	\$83.44	389731013	\$83.44	389740029	\$83.44
389730002	\$83.44	389731014	\$83.44	389740030	\$83.44
389730003	\$83.44	389731015	\$83.44	389740031	\$83.44
389730004	\$83.44	389731016	\$83.44	389740032	\$83.44
389730005	\$83.44	389731017	\$83.44	389740033	\$83.44
389730006	\$83.44	389731018	\$83.44	389740034	\$83.44
389730007	\$83.44	389731019	\$83.44	389740035	\$83.44
389730008	\$83.44	389731020	\$83.44	389740036	\$83.44

Assessment Roll

68-8757 - LMD 1 - Zone 7

Fiscal Year 2019-20



APN	Levy	APN	Levy	APN	Levy
389740037	\$83.44	389751006	\$83.44	389752024	\$83.44
389740038	\$83.44	389751007	\$83.44	389752025	\$83.44
389740039	\$83.44	389751008	\$83.44	389752026	\$83.44
389740040	\$83.44	389751009	\$83.44	389752027	\$83.44
389740041	\$83.44	389751010	\$83.44	389752028	\$83.44
389740042	\$83.44	389751011	\$83.44	389752029	\$83.44
389740043	\$83.44	389751012	\$83.44	389752030	\$83.44
389740044	\$83.44	389751013	\$83.44	389752031	\$83.44
389740045	\$83.44	389751014	\$83.44	389752032	\$83.44
389740046	\$83.44	389751015	\$83.44	389752033	\$83.44
389740047	\$83.44	389751016	\$83.44	389752034	\$83.44
389740048	\$83.44	389751017	\$83.44	389752035	\$83.44
389740049	\$83.44	389751018	\$83.44	389752036	\$83.44
389740050	\$83.44	389751019	\$83.44	389752037	\$83.44
389740051	\$83.44	389751020	\$83.44	389752038	\$83.44
389740052	\$83.44	389751021	\$83.44	389752039	\$83.44
389740053	\$83.44	389751022	\$83.44	389752040	\$83.44
389740054	\$83.44	389751023	\$83.44	389752041	\$83.44
389740055	\$83.44	389751024	\$83.44	389752042	\$83.44
389740056	\$83.44	389751025	\$83.44	389752043	\$83.44
389740057	\$83.44	389752001	\$83.44	389752044	\$83.44
389740058	\$83.44	389752002	\$83.44	389752045	\$83.44
389740059	\$83.44	389752003	\$83.44	389760001	\$161.04
389740060	\$83.44	389752004	\$83.44	389761001	\$83.44
389740061	\$83.44	389752005	\$83.44	389761002	\$83.44
389740062	\$83.44	389752006	\$83.44	389761003	\$83.44
389740063	\$83.44	389752007	\$83.44	389761004	\$83.44
389740064	\$83.44	389752008	\$83.44	389761005	\$83.44
389740065	\$83.44	389752009	\$83.44	389761006	\$83.44
389740066	\$83.44	389752010	\$83.44	389761007	\$83.44
389740067	\$83.44	389752011	\$83.44	389761008	\$83.44
389740068	\$83.44	389752012	\$83.44	389761009	\$83.44
389750001	\$83.44	389752013	\$83.44	389761010	\$83.44
389750002	\$83.44	389752014	\$83.44	389761011	\$83.44
389750003	\$83.44	389752015	\$83.44	389761014	\$83.44
389750004	\$83.44	389752016	\$83.44	389761015	\$83.44
389750005	\$83.44	389752017	\$83.44	389761016	\$83.44
389750006	\$83.44	389752018	\$83.44	389761017	\$83.44
389751001	\$83.44	389752019	\$83.44	389761018	\$83.44
389751002	\$83.44	389752020	\$83.44	389761019	\$83.44
389751003	\$83.44	389752021	\$83.44	389761020	\$83.44
389751004	\$83.44	389752022	\$83.44	389762001	\$83.44
389751005	\$83.44	389752023	\$83.44	389762002	\$83.44

Assessment Roll

68-8757 - LMD 1 - Zone 7

Fiscal Year 2019-20



APN	Levy	APN	Levy	APN	Levy
389762003	\$83.44	389772004	\$83.44	389773001	\$83.44
389762004	\$83.44	389772005	\$83.44	389773002	\$83.44
389762005	\$83.44	389772006	\$83.44	389773003	\$83.44
389762006	\$83.44	389772007	\$83.44	389773004	\$83.44
389762007	\$83.44	389772008	\$83.44	389773005	\$83.44
389762008	\$83.44	389772009	\$83.44	389773006	\$83.44
389771001	\$83.44	389772010	\$83.44	389773007	\$83.44
389771002	\$83.44	389772011	\$83.44	389773008	\$83.44
389771003	\$83.44	389772012	\$83.44	389773009	\$83.44
389771004	\$83.44	389772013	\$83.44	389773010	\$83.44
389771005	\$83.44	389772014	\$83.44	389773011	\$83.44
389771006	\$83.44	389772015	\$83.44	389773012	\$83.44
389771007	\$83.44	389772016	\$83.44	389773013	\$83.44
389771008	\$83.44	389772017	\$83.44	389773014	\$83.44
389771009	\$83.44	389772018	\$83.44	389773015	\$83.44
389771010	\$83.44	389772019	\$83.44	389773016	\$83.44
389771011	\$83.44	389772020	\$83.44	389773017	\$83.44
389771012	\$83.44	389772021	\$83.44	389773018	\$83.44
389772001	\$83.44	389772022	\$83.44	389773019	\$83.44
389772002	\$83.44	389772023	\$83.44	389773020	\$83.44
389772003	\$83.44	389772024	\$83.44		
Totals		Parcels 578		Levy \$67,296.66	

Assessment Roll

68-8758 - LMD 1 - Zone 8

Fiscal Year 2019-20



APN	Levy	APN	Levy	APN	Levy
373225001	\$9.46	373225045	\$9.46	373226028	\$9.46
373225002	\$9.46	373225046	\$9.46	373226029	\$9.46
373225003	\$9.46	373225047	\$9.46	373226030	\$9.46
373225004	\$9.46	373225048	\$9.46	373226031	\$9.46
373225005	\$9.46	373225049	\$9.46	373226032	\$9.46
373225006	\$9.46	373225051	\$9.46	373226033	\$9.46
373225007	\$9.46	373225052	\$9.46	373226034	\$9.46
373225008	\$9.46	373225053	\$9.46	373226035	\$9.46
373225009	\$9.46	373225054	\$9.46	373226036	\$9.46
373225010	\$9.46	373225055	\$9.46	373226037	\$9.46
373225011	\$9.46	373225056	\$9.46	373226038	\$9.46
373225012	\$9.46	373225057	\$9.46	373226039	\$9.46
373225013	\$9.46	373225058	\$9.46	373226040	\$9.46
373225014	\$9.46	373225059	\$9.46	373226041	\$9.46
373225015	\$9.46	373225060	\$9.46	373226042	\$9.46
373225016	\$9.46	373225061	\$9.46	373226043	\$9.46
373225017	\$9.46	373225062	\$9.46	373226044	\$9.46
373225018	\$9.46	373226001	\$9.46	373226045	\$9.46
373225019	\$9.46	373226002	\$9.46	373226046	\$9.46
373225020	\$9.46	373226003	\$9.46	373226047	\$9.46
373225021	\$9.46	373226004	\$9.46	373226048	\$9.46
373225022	\$9.46	373226005	\$9.46	373226049	\$9.46
373225023	\$9.46	373226006	\$9.46	373226050	\$9.46
373225024	\$9.46	373226007	\$9.46	373226051	\$9.46
373225025	\$9.46	373226008	\$9.46	373226052	\$9.46
373225026	\$9.46	373226009	\$9.46	373226053	\$9.46
373225027	\$9.46	373226010	\$9.46	373226054	\$9.46
373225028	\$9.46	373226011	\$9.46	373226055	\$9.46
373225029	\$9.46	373226012	\$9.46	373226057	\$9.46
373225030	\$9.46	373226013	\$9.46	373226058	\$9.46
373225032	\$9.46	373226014	\$9.46	373226059	\$9.46
373225033	\$9.46	373226015	\$9.46	373226060	\$9.46
373225034	\$9.46	373226016	\$9.46	373226061	\$9.46
373225035	\$9.46	373226017	\$9.46	373226062	\$9.46
373225036	\$9.46	373226018	\$9.46	373226063	\$9.46
373225037	\$9.46	373226019	\$9.46	373226064	\$9.46
373225038	\$9.46	373226020	\$9.46	373226065	\$9.46
373225039	\$9.46	373226021	\$9.46	373226066	\$9.46
373225040	\$9.46	373226022	\$9.46	373226067	\$9.46
373225041	\$9.46	373226023	\$9.46	373226068	\$9.46
373225042	\$9.46	373226024	\$9.46	373226069	\$9.46
373225043	\$9.46	373226026	\$9.46	373226070	\$9.46
373225044	\$9.46	373226027	\$9.46	373226071	\$9.46

Assessment Roll

68-8758 - LMD 1 - Zone 8

Fiscal Year 2019-20



APN	Levy	APN	Levy	APN	Levy
373226072	\$9.46	373226076	\$9.46	373226080	\$9.46
373226073	\$9.46	373226077	\$9.46	373226081	\$9.46
373226074	\$9.46	373226078	\$9.46	373226082	\$9.46
373226075	\$9.46	373226079	\$9.46	373226083	\$9.46
Totals		Parcels	141	Levy	\$1,333.86

Assessment Roll

68-8761 - LMD 1 - Zone 11

Fiscal Year 2019-20



APN	Levy	APN	Levy	APN	Levy
371030035	\$12,764.14	371281007	\$182.92	371291008	\$182.92
371030038	\$3,621.80	371281008	\$182.92	371291009	\$182.92
371040014	\$3,501.08	371281009	\$182.92	371291010	\$182.92
371040015	\$3,566.94	371281010	\$182.92	371291011	\$182.92
371040016	\$2,963.30	371281011	\$182.92	371291012	\$182.92
371040017	\$4,469.64	371281012	\$182.92	371291013	\$182.92
371040018	\$1,086.54	371281013	\$182.92	371291014	\$182.92
371040020	\$268.88	371281014	\$182.92	371291015	\$182.92
371270006	\$474.66	371281015	\$182.92	371291016	\$182.92
371270007	\$1,105.74	371281016	\$182.92	371291017	\$182.92
371270023	\$3,259.62	371281017	\$182.92	371291018	\$182.92
371270024	\$2,897.44	371281018	\$182.92	371291019	\$182.92
371270025	\$1,676.46	371281019	\$182.92	371291020	\$182.92
371280001	\$182.92	371281020	\$182.92	371291021	\$182.92
371280002	\$182.92	371281021	\$182.92	371291022	\$182.92
371280003	\$182.92	371281022	\$182.92	371291023	\$182.92
371280004	\$182.92	371281023	\$182.92	371292001	\$182.92
371280005	\$182.92	371281024	\$182.92	371292002	\$182.92
371280006	\$182.92	371281025	\$182.92	371292003	\$182.92
371280007	\$182.92	371281026	\$182.92	371292004	\$182.92
371280008	\$182.92	371281027	\$182.92	371292005	\$182.92
371280009	\$182.92	371281028	\$182.92	371292006	\$182.92
371280010	\$182.92	371281029	\$182.92	371292007	\$182.92
371280011	\$182.92	371281030	\$182.92	371292008	\$182.92
371280012	\$182.92	371290001	\$182.92	371292009	\$182.92
371280013	\$182.92	371290002	\$182.92	371292010	\$182.92
371280014	\$182.92	371290003	\$182.92	371292011	\$182.92
371280015	\$182.92	371290004	\$182.92	371292012	\$182.92
371280016	\$182.92	371290005	\$182.92	371292013	\$182.92
371280017	\$182.92	371290006	\$182.92	371292014	\$182.92
371280018	\$182.92	371290007	\$182.92	371292015	\$182.92
371280019	\$182.92	371290008	\$182.92	371292016	\$182.92
371280020	\$182.92	371290009	\$182.92	371292017	\$182.92
371280021	\$182.92	371290010	\$182.92	371292018	\$182.92
371280022	\$182.92	371290011	\$182.92	371292019	\$182.92
371280023	\$182.92	371290012	\$182.92	371292020	\$182.92
371280024	\$182.92	371291001	\$182.92	371292021	\$182.92
371281001	\$182.92	371291002	\$182.92	371292022	\$182.92
371281002	\$182.92	371291003	\$182.92	371292023	\$182.92
371281003	\$182.92	371291004	\$182.92	371292024	\$182.92
371281004	\$182.92	371291005	\$182.92	371292025	\$182.92
371281005	\$182.92	371291006	\$182.92	371292026	\$182.92
371281006	\$182.92	371291007	\$182.92	371292027	\$182.92

Assessment Roll

68-8761 - LMD 1 - Zone 11

Fiscal Year 2019-20



APN	Levy	APN	Levy	APN	Levy
371292028	\$182.92	371301012	\$182.92	371310021	\$182.92
371292029	\$182.92	371301013	\$182.92	371310022	\$182.92
371292030	\$182.92	371301014	\$182.92	371310023	\$182.92
371300001	\$182.92	371301015	\$182.92	371310024	\$182.92
371300002	\$182.92	371301016	\$182.92	371310025	\$182.92
371300003	\$182.92	371302001	\$182.92	371310026	\$182.92
371300004	\$182.92	371302002	\$182.92	371310027	\$182.92
371300005	\$182.92	371302003	\$182.92	371311001	\$182.92
371300006	\$182.92	371302004	\$182.92	371311002	\$182.92
371300007	\$182.92	371302005	\$182.92	371311003	\$182.92
371300008	\$182.92	371302006	\$182.92	371311004	\$182.92
371300009	\$182.92	371302007	\$182.92	371311005	\$182.92
371300010	\$182.92	371302008	\$182.92	371311006	\$182.92
371300011	\$182.92	371303001	\$182.92	371311007	\$182.92
371300012	\$182.92	371303002	\$182.92	371311008	\$182.92
371300013	\$182.92	371303003	\$182.92	371311009	\$182.92
371300014	\$182.92	371303004	\$182.92	371311010	\$182.92
371300015	\$182.92	371303005	\$182.92	371311011	\$182.92
371300016	\$182.92	371303006	\$182.92	371311012	\$182.92
371300017	\$182.92	371303007	\$182.92	371311013	\$182.92
371300018	\$182.92	371303008	\$182.92	371311014	\$182.92
371300019	\$182.92	371303009	\$182.92	371311015	\$182.92
371300020	\$182.92	371303010	\$182.92	371311016	\$182.92
371300021	\$182.92	371310001	\$182.92	371311017	\$182.92
371300022	\$182.92	371310002	\$182.92	371311018	\$182.92
371300023	\$182.92	371310003	\$182.92	371312001	\$182.92
371300024	\$182.92	371310004	\$182.92	371312002	\$182.92
371300025	\$182.92	371310005	\$182.92	371312003	\$182.92
371300026	\$182.92	371310006	\$182.92	371312004	\$182.92
371300027	\$182.92	371310007	\$182.92	371312005	\$182.92
371300028	\$182.92	371310008	\$182.92	371312006	\$182.92
371300029	\$182.92	371310009	\$182.92	371312007	\$182.92
371301001	\$182.92	371310010	\$182.92	371312008	\$182.92
371301002	\$182.92	371310011	\$182.92	371312009	\$182.92
371301003	\$182.92	371310012	\$182.92	371313001	\$182.92
371301004	\$182.92	371310013	\$182.92	371313002	\$182.92
371301005	\$182.92	371310014	\$182.92	371313003	\$182.92
371301006	\$182.92	371310015	\$182.92	371313004	\$182.92
371301007	\$182.92	371310016	\$182.92	371313005	\$182.92
371301008	\$182.92	371310017	\$182.92	371313006	\$182.92
371301009	\$182.92	371310018	\$182.92	371313007	\$182.92
371301010	\$182.92	371310019	\$182.92	371313008	\$182.92
371301011	\$182.92	371310020	\$182.92	371313009	\$182.92

Assessment Roll

68-8761 - LMD 1 - Zone 11

Fiscal Year 2019-20



APN	Levy	APN	Levy	APN	Levy
371313010	\$182.92	371321005	\$182.92	371330001	\$182.92
371314001	\$182.92	371321006	\$182.92	371330002	\$182.92
371314002	\$182.92	371321007	\$182.92	371330003	\$182.92
371314003	\$182.92	371321008	\$182.92	371330004	\$182.92
371314004	\$182.92	371322001	\$182.92	371330005	\$182.92
371314005	\$182.92	371322002	\$182.92	371330006	\$182.92
371314006	\$182.92	371322003	\$182.92	371330007	\$182.92
371314007	\$182.92	371322004	\$182.92	371330008	\$182.92
371314008	\$182.92	371322005	\$182.92	371330009	\$182.92
371320001	\$182.92	371322006	\$182.92	371330010	\$182.92
371320002	\$182.92	371322007	\$182.92	371330011	\$182.92
371320003	\$182.92	371322008	\$182.92	371330012	\$182.92
371320004	\$182.92	371322009	\$182.92	371330013	\$182.92
371320005	\$182.92	371322010	\$182.92	371330014	\$182.92
371320006	\$182.92	371322011	\$182.92	371330015	\$182.92
371320007	\$182.92	371322012	\$182.92	371330016	\$182.92
371320008	\$182.92	371322013	\$182.92	371330017	\$182.92
371320009	\$182.92	371322014	\$182.92	371330018	\$182.92
371320011	\$182.92	371323001	\$182.92	371330019	\$182.92
371320012	\$182.92	371323002	\$182.92	371330020	\$182.92
371320013	\$182.92	371323003	\$182.92	371330021	\$182.92
371320014	\$182.92	371323004	\$182.92	371330022	\$182.92
371320015	\$182.92	371323005	\$182.92	371330023	\$182.92
371320016	\$182.92	371323006	\$182.92	371330024	\$182.92
371320017	\$182.92	371323007	\$182.92	371330025	\$182.92
371320018	\$182.92	371323008	\$182.92	371330026	\$182.92
371320019	\$182.92	371323009	\$182.92	371330027	\$182.92
371320020	\$182.92	371323010	\$182.92	371330028	\$182.92
371320021	\$182.92	371323011	\$182.92	371330029	\$182.92
371320022	\$182.92	371323012	\$182.92	371330030	\$182.92
371320023	\$182.92	371324001	\$182.92	371330031	\$182.92
371320024	\$182.92	371324002	\$182.92	371330032	\$182.92
371320025	\$182.92	371324003	\$182.92	371330033	\$182.92
371320026	\$182.92	371324004	\$182.92	371330034	\$182.92
371320027	\$182.92	371324005	\$182.92	371330035	\$182.92
371320028	\$182.92	371324006	\$182.92	371330036	\$182.92
371320029	\$182.92	371324007	\$182.92	371330037	\$182.92
371320030	\$182.92	371324009	\$182.92	371331001	\$182.92
371320031	\$182.92	371324010	\$182.92	371331002	\$182.92
371321001	\$182.92	371324011	\$182.92	371331003	\$182.92
371321002	\$182.92	371324012	\$182.92	371331004	\$182.92
371321003	\$182.92	371324013	\$182.92	371331005	\$182.92
371321004	\$182.92	371324014	\$182.92	371331006	\$182.92

Assessment Roll

68-8761 - LMD 1 - Zone 11

Fiscal Year 2019-20



APN	Levy	APN	Levy	APN	Levy
371331007	\$182.92	371340013	\$182.92	371341007	\$182.92
371331008	\$182.92	371340014	\$182.92	371341008	\$182.92
371331009	\$182.92	371340015	\$182.92	371341009	\$182.92
371331010	\$182.92	371340016	\$182.92	371341010	\$182.92
371331011	\$182.92	371340017	\$182.92	371341011	\$182.92
371331012	\$182.92	371340018	\$182.92	371341012	\$182.92
371331013	\$182.92	371340019	\$182.92	371342001	\$182.92
371331014	\$182.92	371340020	\$182.92	371342002	\$182.92
371331015	\$182.92	371340021	\$182.92	371342003	\$182.92
371332001	\$182.92	371340022	\$182.92	371342004	\$182.92
371332002	\$182.92	371340023	\$182.92	371342005	\$182.92
371332003	\$182.92	371340024	\$182.92	371342006	\$182.92
371332004	\$182.92	371340025	\$182.92	371342007	\$182.92
371332005	\$182.92	371340026	\$182.92	371342008	\$182.92
371332006	\$182.92	371340027	\$182.92	371342009	\$182.92
371333001	\$182.92	371340028	\$182.92	371342010	\$182.92
371333002	\$182.92	371340029	\$182.92	371342011	\$182.92
371333003	\$182.92	371340030	\$182.92	371342012	\$182.92
371333004	\$182.92	371340031	\$182.92	371342013	\$182.92
371333005	\$182.92	371340032	\$182.92	371342014	\$182.92
371333006	\$182.92	371340033	\$182.92	371342015	\$182.92
371333007	\$182.92	371340034	\$182.92	371342016	\$182.92
371333008	\$182.92	371340035	\$182.92	371342017	\$182.92
371333009	\$182.92	371340036	\$182.92	371350001	\$182.92
371333010	\$182.92	371340037	\$182.92	371350002	\$182.92
371333011	\$182.92	371340038	\$182.92	371350003	\$182.92
371333012	\$182.92	371340039	\$182.92	371350004	\$182.92
371333013	\$182.92	371340040	\$182.92	371350005	\$182.92
371333014	\$182.92	371340041	\$182.92	371350006	\$182.92
371333015	\$182.92	371340042	\$182.92	371350007	\$182.92
371333016	\$182.92	371340043	\$182.92	371350008	\$182.92
371340001	\$182.92	371340044	\$182.92	371350009	\$182.92
371340002	\$182.92	371340045	\$182.92	371350010	\$182.92
371340003	\$182.92	371340046	\$182.92	371350011	\$182.92
371340004	\$182.92	371340047	\$182.92	371350012	\$182.92
371340005	\$182.92	371340048	\$182.92	371350013	\$182.92
371340006	\$182.92	371340049	\$182.92	371350014	\$182.92
371340007	\$182.92	371341001	\$182.92	371350015	\$182.92
371340008	\$182.92	371341002	\$182.92	371350016	\$182.92
371340009	\$182.92	371341003	\$182.92	371350017	\$182.92
371340010	\$182.92	371341004	\$182.92	371350018	\$182.92
371340011	\$182.92	371341005	\$182.92	371350019	\$182.92
371340012	\$182.92	371341006	\$182.92	371350020	\$182.92

Assessment Roll

68-8761 - LMD 1 - Zone 11

Fiscal Year 2019-20



APN	Levy	APN	Levy	APN	Levy
371350021	\$182.92	371351043	\$182.92	371360043	\$182.92
371351001	\$182.92	371360001	\$182.92	371360044	\$182.92
371351002	\$182.92	371360002	\$182.92	371360045	\$182.92
371351003	\$182.92	371360003	\$182.92	371361001	\$182.92
371351004	\$182.92	371360004	\$182.92	371361002	\$182.92
371351005	\$182.92	371360005	\$182.92	371361003	\$182.92
371351006	\$182.92	371360006	\$182.92	371361004	\$182.92
371351007	\$182.92	371360007	\$182.92	371361005	\$182.92
371351008	\$182.92	371360008	\$182.92	371361006	\$182.92
371351009	\$182.92	371360009	\$182.92	371361007	\$182.92
371351010	\$182.92	371360010	\$182.92	371361008	\$182.92
371351011	\$182.92	371360011	\$182.92	371361009	\$182.92
371351012	\$182.92	371360012	\$182.92	371361010	\$182.92
371351013	\$182.92	371360013	\$182.92	371361011	\$182.92
371351014	\$182.92	371360014	\$182.92	371361012	\$182.92
371351015	\$182.92	371360015	\$182.92	371361013	\$182.92
371351016	\$182.92	371360016	\$182.92	371361014	\$182.92
371351017	\$182.92	371360017	\$182.92	371361015	\$182.92
371351018	\$182.92	371360018	\$182.92	371361016	\$182.92
371351019	\$182.92	371360019	\$182.92	371361017	\$182.92
371351020	\$182.92	371360020	\$182.92	371361018	\$182.92
371351021	\$182.92	371360021	\$182.92	371361019	\$182.92
371351022	\$182.92	371360022	\$182.92	371361020	\$182.92
371351023	\$182.92	371360023	\$182.92	371361021	\$182.92
371351024	\$182.92	371360024	\$182.92	371361022	\$182.92
371351025	\$182.92	371360025	\$182.92	371361023	\$182.92
371351026	\$182.92	371360026	\$182.92	371361024	\$182.92
371351027	\$182.92	371360027	\$182.92	371361025	\$182.92
371351028	\$182.92	371360028	\$182.92	371370001	\$182.92
371351029	\$182.92	371360029	\$182.92	371370002	\$182.92
371351030	\$182.92	371360030	\$182.92	371370003	\$182.92
371351031	\$182.92	371360031	\$182.92	371370004	\$182.92
371351032	\$182.92	371360032	\$182.92	371370005	\$182.92
371351033	\$182.92	371360033	\$182.92	371370006	\$182.92
371351034	\$182.92	371360034	\$182.92	371370007	\$182.92
371351035	\$182.92	371360035	\$182.92	371370008	\$182.92
371351036	\$182.92	371360036	\$182.92	371370009	\$182.92
371351037	\$182.92	371360037	\$182.92	371370010	\$182.92
371351038	\$182.92	371360038	\$182.92	371370011	\$182.92
371351039	\$182.92	371360039	\$182.92	371370012	\$182.92
371351040	\$182.92	371360040	\$182.92	371370013	\$182.92
371351041	\$182.92	371360041	\$182.92	371370014	\$182.92
371351042	\$182.92	371360042	\$182.92	371370015	\$182.92

Assessment Roll

68-8761 - LMD 1 - Zone 11

Fiscal Year 2019-20



APN	Levy	APN	Levy	APN	Levy
371370016	\$182.92	371373001	\$182.92	371382002	\$182.92
371370017	\$182.92	371373002	\$182.92	371382003	\$182.92
371370018	\$182.92	371373003	\$182.92	371382004	\$182.92
371370019	\$182.92	371373004	\$182.92	371382005	\$182.92
371370020	\$182.92	371373005	\$182.92	371382006	\$182.92
371370021	\$182.92	371373006	\$182.92	371382007	\$182.92
371370022	\$182.92	371380001	\$182.92	371382008	\$182.92
371370023	\$182.92	371380002	\$182.92	371382009	\$182.92
371370024	\$182.92	371380003	\$182.92	371382010	\$182.92
371370025	\$182.92	371380004	\$182.92	371382011	\$182.92
371370026	\$182.92	371380005	\$182.92	371382012	\$182.92
371370027	\$182.92	371380006	\$182.92	371382013	\$182.92
371370028	\$182.92	371380007	\$182.92	371382014	\$182.92
371370029	\$182.92	371380008	\$182.92	371382015	\$182.92
371370030	\$182.92	371380009	\$182.92	371382016	\$182.92
371370031	\$182.92	371380010	\$182.92	371382017	\$182.92
371370032	\$182.92	371380011	\$182.92	371390001	\$182.92
371370033	\$182.92	371380012	\$182.92	371390002	\$182.92
371370034	\$182.92	371380013	\$182.92	371390003	\$182.92
371370035	\$182.92	371380014	\$182.92	371390004	\$182.92
371370036	\$182.92	371380015	\$182.92	371390005	\$182.92
371370037	\$182.92	371380016	\$182.92	371390006	\$182.92
371370038	\$182.92	371380017	\$182.92	371390007	\$182.92
371370039	\$182.92	371380018	\$182.92	371390008	\$182.92
371371001	\$182.92	371380019	\$182.92	371390009	\$182.92
371371002	\$182.92	371380020	\$182.92	371390010	\$182.92
371371003	\$182.92	371380021	\$182.92	371390011	\$182.92
371371004	\$182.92	371381001	\$182.92	371390012	\$182.92
371371005	\$182.92	371381002	\$182.92	371390013	\$182.92
371371006	\$182.92	371381003	\$182.92	371390014	\$182.92
371371007	\$182.92	371381004	\$182.92	371390015	\$182.92
371371008	\$182.92	371381005	\$182.92	371390016	\$182.92
371371009	\$182.92	371381006	\$182.92	371390017	\$182.92
371371010	\$182.92	371381007	\$182.92	371390018	\$182.92
371371011	\$182.92	371381008	\$182.92	371390019	\$182.92
371372001	\$182.92	371381009	\$182.92	371390020	\$182.92
371372002	\$182.92	371381010	\$182.92	371390021	\$182.92
371372003	\$182.92	371381011	\$182.92	371390022	\$182.92
371372004	\$182.92	371381012	\$182.92	371391001	\$182.92
371372005	\$182.92	371381013	\$182.92	371391002	\$182.92
371372006	\$182.92	371381014	\$182.92	371391003	\$182.92
371372007	\$182.92	371381015	\$182.92	371391004	\$182.92
371372008	\$182.92	371382001	\$182.92	371391005	\$182.92

Assessment Roll

68-8761 - LMD 1 - Zone 11

Fiscal Year 2019-20



APN	Levy	APN	Levy	APN	Levy
371391006	\$182.92	371400012	\$182.92	371400055	\$182.92
371391007	\$182.92	371400013	\$182.92	371400056	\$182.92
371391008	\$182.92	371400014	\$182.92	371400057	\$182.92
371391009	\$182.92	371400015	\$182.92	371400058	\$182.92
371391010	\$182.92	371400016	\$182.92	371400059	\$182.92
371391011	\$182.92	371400017	\$182.92	371400060	\$182.92
371391012	\$182.92	371400018	\$182.92	371400061	\$182.92
371391013	\$182.92	371400019	\$182.92	371400062	\$182.92
371391014	\$182.92	371400020	\$182.92	371400063	\$182.92
371391015	\$182.92	371400021	\$182.92	371411001	\$182.92
371391016	\$182.92	371400022	\$182.92	371411002	\$182.92
371391017	\$182.92	371400023	\$182.92	371411003	\$182.92
371391018	\$182.92	371400024	\$182.92	371411004	\$182.92
371391019	\$182.92	371400025	\$182.92	371411005	\$182.92
371391020	\$182.92	371400026	\$182.92	371411006	\$182.92
371391021	\$182.92	371400027	\$182.92	371411007	\$182.92
371391022	\$182.92	371400028	\$182.92	371411008	\$182.92
371391023	\$182.92	371400029	\$182.92	371411009	\$182.92
371391024	\$182.92	371400030	\$182.92	371411010	\$182.92
371391025	\$182.92	371400031	\$182.92	371411011	\$182.92
371391026	\$182.92	371400032	\$182.92	371411012	\$182.92
371391027	\$182.92	371400033	\$182.92	371411013	\$182.92
371391028	\$182.92	371400034	\$182.92	371411014	\$182.92
371391029	\$182.92	371400035	\$182.92	371411015	\$182.92
371391030	\$182.92	371400036	\$182.92	371411016	\$182.92
371391031	\$182.92	371400037	\$182.92	371411017	\$182.92
371392001	\$182.92	371400038	\$182.92	371411018	\$182.92
371392002	\$182.92	371400039	\$182.92	371411019	\$182.92
371392003	\$182.92	371400040	\$182.92	371411020	\$182.92
371392004	\$182.92	371400041	\$182.92	371411021	\$182.92
371392005	\$182.92	371400042	\$182.92	371411022	\$182.92
371392006	\$182.92	371400043	\$182.92	371411023	\$182.92
371400001	\$182.92	371400044	\$182.92	371411024	\$182.92
371400002	\$182.92	371400045	\$182.92	371411025	\$182.92
371400003	\$182.92	371400046	\$182.92	371411026	\$182.92
371400004	\$182.92	371400047	\$182.92	371411027	\$182.92
371400005	\$182.92	371400048	\$182.92	371411028	\$182.92
371400006	\$182.92	371400049	\$182.92	371412001	\$182.92
371400007	\$182.92	371400050	\$182.92	371412002	\$182.92
371400008	\$182.92	371400051	\$182.92	371412003	\$182.92
371400009	\$182.92	371400052	\$182.92	371412004	\$182.92
371400010	\$182.92	371400053	\$182.92	371412005	\$182.92
371400011	\$182.92	371400054	\$182.92	371412006	\$182.92

Assessment Roll

68-8761 - LMD 1 - Zone 11

Fiscal Year 2019-20



APN	Levy	APN	Levy	APN	Levy
371412007	\$182.92	371421020	\$182.92	371422012	\$182.92
371412008	\$182.92	371421021	\$182.92	371422013	\$182.92
371412009	\$182.92	371421022	\$182.92	371422014	\$182.92
371412010	\$182.92	371421023	\$182.92	371422015	\$182.92
371412011	\$182.92	371421024	\$182.92	371422016	\$182.92
371412012	\$182.92	371421025	\$182.92	371422017	\$182.92
371413001	\$182.92	371421026	\$182.92	371423001	\$182.92
371413002	\$182.92	371421027	\$182.92	371423002	\$182.92
371413003	\$182.92	371421028	\$182.92	371423003	\$182.92
371413004	\$182.92	371421029	\$182.92	371423004	\$182.92
371413005	\$182.92	371421030	\$182.92	371423005	\$182.92
371413006	\$182.92	371421031	\$182.92	371423007	\$182.92
371413007	\$182.92	371421032	\$182.92	371423008	\$182.92
371413008	\$182.92	371421033	\$182.92	371423009	\$182.92
371413009	\$182.92	371421034	\$182.92	371423010	\$182.92
371413010	\$182.92	371421035	\$182.92	371423011	\$182.92
371413011	\$182.92	371421036	\$182.92	371424001	\$182.92
371413012	\$182.92	371421037	\$182.92	371424002	\$182.92
371413013	\$182.92	371421038	\$182.92	371424003	\$182.92
371413014	\$182.92	371421039	\$182.92	371424004	\$182.92
371413015	\$182.92	371421040	\$182.92	371424005	\$182.92
371413016	\$182.92	371421041	\$182.92	371424006	\$182.92
371413017	\$182.92	371421042	\$182.92	371424007	\$182.92
371413018	\$182.92	371421043	\$182.92	371424008	\$182.92
371413019	\$182.92	371421044	\$182.92	371424009	\$182.92
371421001	\$182.92	371421045	\$182.92	371424010	\$182.92
371421002	\$182.92	371421046	\$182.92	371424011	\$182.92
371421003	\$182.92	371421047	\$182.92	371424012	\$182.92
371421004	\$182.92	371421048	\$182.92	371424013	\$182.92
371421005	\$182.92	371421049	\$182.92	371424014	\$182.92
371421006	\$182.92	371421050	\$182.92	371425001	\$182.92
371421007	\$182.92	371421051	\$182.92	371425002	\$182.92
371421008	\$182.92	371422001	\$182.92	371425003	\$182.92
371421009	\$182.92	371422002	\$182.92	371425004	\$182.92
371421010	\$182.92	371422003	\$182.92	371430001	\$182.92
371421012	\$182.92	371422004	\$182.92	371430002	\$182.92
371421013	\$182.92	371422005	\$182.92	371430003	\$182.92
371421014	\$182.92	371422006	\$182.92	371430004	\$182.92
371421015	\$182.92	371422007	\$182.92	371430005	\$182.92
371421016	\$182.92	371422008	\$182.92	371430006	\$182.92
371421017	\$182.92	371422009	\$182.92	371430007	\$182.92
371421018	\$182.92	371422010	\$182.92	371430008	\$182.92
371421019	\$182.92	371422011	\$182.92	371430009	\$182.92

Assessment Roll

68-8761 - LMD 1 - Zone 11

Fiscal Year 2019-20



APN	Levy	APN	Levy	APN	Levy
371430010	\$182.92	371432001	\$182.92	371441004	\$182.92
371430011	\$182.92	371432002	\$182.92	371441005	\$182.92
371430012	\$182.92	371432003	\$182.92	371441006	\$182.92
371430013	\$182.92	371432004	\$182.92	371441007	\$182.92
371430014	\$182.92	371432005	\$182.92	371441008	\$182.92
371430015	\$182.92	371432006	\$182.92	371441009	\$182.92
371430016	\$182.92	371440001	\$182.92	371441010	\$182.92
371430017	\$182.92	371440002	\$182.92	371441011	\$182.92
371430018	\$182.92	371440003	\$182.92	371441012	\$182.92
371430019	\$182.92	371440004	\$182.92	371441013	\$182.92
371430020	\$182.92	371440005	\$182.92	371441014	\$182.92
371430021	\$182.92	371440006	\$182.92	371441015	\$182.92
371430022	\$182.92	371440007	\$182.92	371441016	\$182.92
371430023	\$182.92	371440008	\$182.92	371441017	\$182.92
371430024	\$182.92	371440009	\$182.92	371441018	\$182.92
371431001	\$182.92	371440010	\$182.92	371441019	\$182.92
371431002	\$182.92	371440011	\$182.92	371441020	\$182.92
371431003	\$182.92	371440012	\$182.92	371441021	\$182.92
371431004	\$182.92	371440013	\$182.92	371441022	\$182.92
371431005	\$182.92	371440014	\$182.92	371441023	\$182.92
371431006	\$182.92	371440015	\$182.92	371441024	\$182.92
371431007	\$182.92	371440016	\$182.92	371442001	\$182.92
371431008	\$182.92	371440017	\$182.92	371442002	\$182.92
371431009	\$182.92	371440018	\$182.92	371442003	\$182.92
371431010	\$182.92	371440019	\$182.92	371442004	\$182.92
371431011	\$182.92	371440020	\$182.92	371442005	\$182.92
371431012	\$182.92	371440021	\$182.92	371442006	\$182.92
371431013	\$182.92	371440022	\$182.92	371442007	\$182.92
371431014	\$182.92	371440023	\$182.92	371442008	\$182.92
371431015	\$182.92	371440024	\$182.92	371442009	\$182.92
371431016	\$182.92	371440025	\$182.92	371442010	\$182.92
371431017	\$182.92	371440026	\$182.92	371442011	\$182.92
371431018	\$182.92	371440027	\$182.92	371442012	\$182.92
371431019	\$182.92	371441001	\$182.92	371442013	\$182.92
371431020	\$182.92	371441002	\$182.92	371442014	\$182.92
371431021	\$182.92	371441003	\$182.92		
Totals		Parcels 1,139		Levy \$247,624.16	

Assessment Roll

68-8764 - LMD 1 - Zone 14

Fiscal Year 2019-20



APN	Levy	APN	Levy	APN	Levy
347511048	\$96.08	347533009	\$96.08	347540022	\$96.08
347511049	\$96.08	347533010	\$96.08	347540023	\$96.08
347511050	\$96.08	347533011	\$96.08	347540024	\$96.08
347511051	\$96.08	347533012	\$96.08	347540025	\$96.08
347511052	\$96.08	347533013	\$96.08	347540026	\$96.08
347511053	\$96.08	347533014	\$96.08	347540027	\$96.08
347511054	\$96.08	347533015	\$96.08	347540028	\$96.08
347511055	\$96.08	347533016	\$96.08	347540029	\$96.08
347511056	\$96.08	347533017	\$96.08	347540030	\$96.08
347511057	\$96.08	347533018	\$96.08	347540031	\$96.08
347530001	\$96.08	347533019	\$96.08	347540032	\$96.08
347530002	\$96.08	347533020	\$96.08	347540033	\$96.08
347530003	\$96.08	347533021	\$96.08	347540034	\$96.08
347531002	\$96.08	347533022	\$96.08	347540035	\$96.08
347531003	\$96.08	347533023	\$96.08	347540036	\$96.08
347531004	\$96.08	347533024	\$96.08	347541001	\$96.08
347531005	\$96.08	347533025	\$96.08	347541002	\$96.08
347531006	\$96.08	347533026	\$96.08	347541003	\$96.08
347531007	\$96.08	347533027	\$96.08	347541004	\$96.08
347531008	\$96.08	347534001	\$96.08	347541005	\$96.08
347532001	\$96.08	347534002	\$96.08	347541006	\$96.08
347532002	\$96.08	347534003	\$96.08	347541007	\$96.08
347532003	\$96.08	347534004	\$96.08	347541008	\$96.08
347532004	\$96.08	347534005	\$96.08	347541009	\$96.08
347532005	\$96.08	347540003	\$96.08	347541010	\$96.08
347532006	\$96.08	347540004	\$96.08	347541011	\$96.08
347532007	\$96.08	347540005	\$96.08	347541012	\$96.08
347532008	\$96.08	347540006	\$96.08	347541013	\$96.08
347532009	\$96.08	347540007	\$96.08	347541014	\$96.08
347532010	\$96.08	347540008	\$96.08	347541015	\$96.08
347532011	\$96.08	347540009	\$96.08	347541016	\$96.08
347532012	\$96.08	347540010	\$96.08	347541017	\$96.08
347532013	\$96.08	347540011	\$96.08	347541018	\$96.08
347532014	\$96.08	347540012	\$96.08	347541019	\$96.08
347532015	\$96.08	347540013	\$96.08	347541020	\$96.08
347533001	\$96.08	347540014	\$96.08	347541021	\$96.08
347533002	\$96.08	347540015	\$96.08	347541022	\$96.08
347533003	\$96.08	347540016	\$96.08	347541023	\$96.08
347533004	\$96.08	347540017	\$96.08	347541024	\$96.08
347533005	\$96.08	347540018	\$96.08	347541025	\$96.08
347533006	\$96.08	347540019	\$96.08	347542001	\$96.08
347533007	\$96.08	347540020	\$96.08	347542002	\$96.08
347533008	\$96.08	347540021	\$96.08	347542003	\$96.08

Assessment Roll

68-8764 - LMD 1 - Zone 14

Fiscal Year 2019-20



APN	Levy	APN	Levy	APN	Levy
347542004	\$96.08	347550014	\$96.08	347550035	\$96.08
347542005	\$96.08	347550015	\$96.08	347550036	\$96.08
347542006	\$96.08	347550016	\$96.08	347550037	\$96.08
347542007	\$96.08	347550017	\$96.08	347550038	\$96.08
347542008	\$96.08	347550018	\$96.08	347550039	\$96.08
347542009	\$96.08	347550019	\$96.08	347550040	\$96.08
347542010	\$96.08	347550020	\$96.08	347550041	\$96.08
347542011	\$96.08	347550021	\$96.08	347550042	\$96.08
347550001	\$96.08	347550022	\$96.08	347550043	\$96.08
347550002	\$96.08	347550023	\$96.08	347550044	\$96.08
347550003	\$96.08	347550024	\$96.08	347550045	\$96.08
347550004	\$96.08	347550025	\$96.08	347550046	\$96.08
347550005	\$96.08	347550026	\$96.08	347550047	\$96.08
347550006	\$96.08	347550027	\$96.08	347550048	\$96.08
347550007	\$96.08	347550028	\$96.08	347551001	\$96.08
347550008	\$96.08	347550029	\$96.08	347551002	\$96.08
347550009	\$96.08	347550030	\$96.08	347551003	\$96.08
347550010	\$96.08	347550031	\$96.08	347551004	\$96.08
347550011	\$96.08	347550032	\$96.08	347551005	\$96.08
347550012	\$96.08	347550033	\$96.08		
347550013	\$96.08	347550034	\$96.08		
Totals		Parcels 190		Levy \$18,255.20	

Assessment Roll

68-8765 - LMD 1 - Zone 15

Fiscal Year 2019-20



APN	Levy	APN	Levy	APN	Levy
347590001	\$176.78	347590026	\$176.78	347590051	\$176.78
347590002	\$176.78	347590027	\$176.78	347590052	\$176.78
347590003	\$176.78	347590028	\$176.78	347590053	\$176.78
347590004	\$176.78	347590029	\$176.78	347590054	\$176.78
347590005	\$176.78	347590030	\$176.78	347590055	\$176.78
347590006	\$176.78	347590031	\$176.78	347590056	\$176.78
347590007	\$176.78	347590032	\$176.78	347590057	\$176.78
347590008	\$176.78	347590033	\$176.78	347590058	\$176.78
347590009	\$176.78	347590034	\$176.78	347590059	\$176.78
347590010	\$176.78	347590035	\$176.78	347590060	\$176.78
347590011	\$176.78	347590036	\$176.78	347590061	\$176.78
347590012	\$176.78	347590037	\$176.78	347590062	\$176.78
347590013	\$176.78	347590038	\$176.78	347590063	\$176.78
347590014	\$176.78	347590039	\$176.78	347590064	\$176.78
347590015	\$176.78	347590040	\$176.78	347590065	\$176.78
347590016	\$176.78	347590041	\$176.78	347590066	\$176.78
347590017	\$176.78	347590042	\$176.78	347590067	\$176.78
347590018	\$176.78	347590043	\$176.78	347590068	\$176.78
347590019	\$176.78	347590044	\$176.78	347590069	\$176.78
347590020	\$176.78	347590045	\$176.78	347590070	\$176.78
347590021	\$176.78	347590046	\$176.78	347590071	\$176.78
347590022	\$176.78	347590047	\$176.78	347590072	\$176.78
347590023	\$176.78	347590048	\$176.78	347590073	\$176.78
347590024	\$176.78	347590049	\$176.78	347590074	\$176.78
347590025	\$176.78	347590050	\$176.78	347590075	\$176.78
Totals		Parcels 75	Levy \$13,258.50		

Assessment Roll

68-8766 - LMD 1 - Zone 16

Fiscal Year 2019-20



APN	Levy	APN	Levy	APN	Levy
347120034	\$7,156.92	377373011	\$1,470.60		
Totals		Parcels 2		Levy	\$8,627.52

Assessment Roll

68-8767 - LMD 1 - Zone 17

Fiscal Year 2019-20



APN	Levy	APN	Levy	APN	Levy
349600001	\$112.30	349610008	\$112.30	349612002	\$112.30
349600002	\$112.30	349610009	\$112.30	349612003	\$112.30
349600003	\$112.30	349610010	\$112.30	349612004	\$112.30
349600004	\$112.30	349610011	\$112.30	349612005	\$112.30
349600005	\$112.30	349610012	\$112.30	349612006	\$112.30
349600006	\$112.30	349610013	\$112.30	349612007	\$112.30
349600007	\$112.30	349610014	\$112.30	349612008	\$112.30
349600008	\$112.30	349610015	\$112.30	349612009	\$112.30
349600009	\$112.30	349610016	\$112.30	349612010	\$112.30
349600010	\$112.30	349610017	\$112.30	349612011	\$112.30
349600011	\$112.30	349611001	\$112.30	349612012	\$112.30
349600012	\$112.30	349611002	\$112.30	349612013	\$112.30
349600013	\$112.30	349611003	\$112.30	349612014	\$112.30
349610001	\$112.30	349611004	\$112.30	349612015	\$112.30
349610002	\$112.30	349611005	\$112.30	349612016	\$112.30
349610003	\$112.30	349611006	\$112.30	349612017	\$112.30
349610004	\$112.30	349611007	\$112.30	349612018	\$112.30
349610005	\$112.30	349611008	\$112.30	349612019	\$112.30
349610006	\$112.30	349611009	\$112.30	349612020	\$112.30
349610007	\$112.30	349612001	\$112.30	349612021	\$112.30
Totals		Parcels 60		Levy \$6,738.00	

Assessment Roll

68-8768 - LMD 1 - Zone 18

Fiscal Year 2019-20



APN	Levy	APN	Levy	APN	Levy
394220001	\$149.18	394220033	\$149.18	394261003	\$149.18
394220002	\$149.18	394220034	\$149.18	394261004	\$149.18
394220003	\$149.18	394220035	\$149.18	394261005	\$149.18
394220004	\$149.18	394220036	\$149.18	394261006	\$149.18
394220005	\$149.18	394220037	\$149.18	394261007	\$149.18
394220006	\$149.18	394220038	\$149.18	394261008	\$149.18
394220007	\$149.18	394220039	\$149.18	394261009	\$149.18
394220008	\$149.18	394221001	\$149.18	394261010	\$149.18
394220009	\$149.18	394221002	\$149.18	394262001	\$149.18
394220010	\$149.18	394221003	\$149.18	394262002	\$149.18
394220011	\$149.18	394221004	\$149.18	394262003	\$149.18
394220012	\$149.18	394221005	\$149.18	394262004	\$149.18
394220013	\$149.18	394260001	\$149.18	394262005	\$149.18
394220014	\$149.18	394260002	\$149.18	394262006	\$149.18
394220015	\$149.18	394260003	\$149.18	394262007	\$149.18
394220016	\$149.18	394260004	\$149.18	394262008	\$149.18
394220017	\$149.18	394260005	\$149.18	394262009	\$149.18
394220018	\$149.18	394260006	\$149.18	394262010	\$149.18
394220019	\$149.18	394260007	\$149.18	394262011	\$149.18
394220020	\$149.18	394260008	\$149.18	394262012	\$149.18
394220021	\$149.18	394260009	\$149.18	394262013	\$149.18
394220022	\$149.18	394260010	\$149.18	394262014	\$149.18
394220023	\$149.18	394260011	\$149.18	394262015	\$149.18
394220024	\$149.18	394260012	\$149.18	394262016	\$149.18
394220025	\$149.18	394260013	\$149.18	394262017	\$149.18
394220026	\$149.18	394260014	\$149.18	394262018	\$149.18
394220027	\$149.18	394260015	\$149.18	394262019	\$149.18
394220028	\$149.18	394260016	\$149.18	394262020	\$149.18
394220029	\$149.18	394260017	\$149.18	394262021	\$149.18
394220030	\$149.18	394260018	\$149.18	394262022	\$149.18
394220031	\$149.18	394261001	\$149.18		
394220032	\$149.18	394261002	\$149.18		

Totals

Parcels 94

Levy \$14,022.92

Assessment Roll

68-8769 - LMD 1 - Zone 19

Fiscal Year 2019-20



APN	Levy	APN	Levy	APN	Levy
394190001	\$62.80	394192018	\$62.80	394251014	\$62.80
394190002	\$62.80	394192019	\$62.80	394251015	\$62.80
394190003	\$62.80	394192020	\$62.80	394251016	\$62.80
394190004	\$62.80	394192021	\$62.80	394251017	\$62.80
394190005	\$62.80	394192022	\$62.80	394251018	\$62.80
394190006	\$62.80	394192023	\$62.80	394251019	\$62.80
394190007	\$62.80	394192024	\$62.80	394251020	\$62.80
394190008	\$62.80	394192025	\$62.80	394251021	\$62.80
394190009	\$62.80	394192027	\$62.80	394251022	\$62.80
394190010	\$62.80	394192028	\$62.80	394252001	\$62.80
394190011	\$62.80	394192029	\$62.80	394252002	\$62.80
394191001	\$62.80	394192030	\$62.80	394252003	\$62.80
394191002	\$62.80	394192031	\$62.80	394252004	\$62.80
394191003	\$62.80	394192032	\$62.80	394252005	\$62.80
394191004	\$62.80	394192033	\$62.80	394252006	\$62.80
394191005	\$62.80	394250001	\$62.80	394252007	\$62.80
394191006	\$62.80	394250002	\$62.80	394252008	\$62.80
394191007	\$62.80	394250003	\$62.80	394252009	\$62.80
394191008	\$62.80	394250004	\$62.80	394252010	\$62.80
394192001	\$62.80	394250005	\$62.80	394252011	\$62.80
394192002	\$62.80	394250006	\$62.80	394252012	\$62.80
394192003	\$62.80	394250007	\$62.80	394252013	\$62.80
394192004	\$62.80	394251001	\$62.80	394252014	\$62.80
394192005	\$62.80	394251002	\$62.80	394252015	\$62.80
394192006	\$62.80	394251003	\$62.80	394252016	\$62.80
394192007	\$62.80	394251004	\$62.80	394252017	\$62.80
394192008	\$62.80	394251005	\$62.80	394252018	\$62.80
394192009	\$62.80	394251006	\$62.80	394252019	\$62.80
394192010	\$62.80	394251007	\$62.80	394252020	\$62.80
394192011	\$62.80	394251008	\$62.80	394252021	\$62.80
394192012	\$62.80	394251009	\$62.80	394252022	\$62.80
394192014	\$62.80	394251010	\$62.80	394252023	\$62.80
394192015	\$62.80	394251011	\$62.80	394252024	\$62.80
394192016	\$62.80	394251012	\$62.80	394252025	\$62.80
394192017	\$62.80	394251013	\$62.80	394252026	\$62.80
Totals		Parcels 105		Levy \$6,594.00	

Assessment Roll

68-8770 - LMD 1 - Zone 20

Fiscal Year 2019-20



APN	Levy	APN	Levy	APN	Levy
363350001	\$507.16	363350009	\$507.16	363350017	\$507.16
363350002	\$507.16	363350010	\$507.16	363350018	\$507.16
363350003	\$507.16	363350011	\$507.16	363350019	\$507.16
363350004	\$507.16	363350012	\$507.16	363350020	\$507.16
363350005	\$507.16	363350013	\$507.16	363350022	\$507.16
363350006	\$507.16	363350014	\$507.16	363350023	\$844.42
363350007	\$507.16	363350015	\$507.16	363350024	\$798.78
363350008	\$507.16	363350016	\$507.16		
Totals		Parcels 23		Levy	\$12,293.56

Assessment Roll

68-8771 - LMD 1 - Zone 21

Fiscal Year 2019-20



APN	Levy	APN	Levy	APN	Levy
379150053	\$189.16	379500004	\$189.16	379501007	\$189.16
379150054	\$189.16	379500005	\$189.16	379501008	\$189.16
379150055	\$189.16	379500006	\$189.16	379501009	\$189.16
379150056	\$189.16	379500007	\$189.16	379501010	\$189.16
379150057	\$189.16	379500008	\$189.16	379501011	\$189.16
379150058	\$189.16	379500009	\$189.16	379501012	\$189.16
379151001	\$189.16	379500010	\$189.16	379501013	\$189.16
379151002	\$189.16	379500011	\$189.16	379501014	\$189.16
379151003	\$189.16	379500012	\$189.16	379501015	\$189.16
379151004	\$189.16	379500013	\$189.16	379501016	\$189.16
379151005	\$189.16	379500014	\$189.16	379501017	\$189.16
379151006	\$189.16	379500015	\$189.16	379501018	\$189.16
379151007	\$189.16	379500016	\$189.16	379501019	\$189.16
379151008	\$189.16	379500017	\$189.16	379501020	\$189.16
379151009	\$189.16	379500018	\$189.16	379501021	\$189.16
379151010	\$189.16	379500019	\$189.16	379501022	\$189.16
379151011	\$189.16	379500020	\$189.16	379501023	\$189.16
379151012	\$189.16	379500021	\$189.16	379501024	\$189.16
379151013	\$189.16	379500022	\$189.16	379501025	\$189.16
379151014	\$189.16	379500023	\$189.16	379501026	\$189.16
379151015	\$189.16	379500024	\$189.16	379501027	\$189.16
379151016	\$189.16	379501001	\$189.16	379501028	\$189.16
379151017	\$189.16	379501002	\$189.16	379501029	\$189.16
379151018	\$189.16	379501003	\$189.16	379501030	\$189.16
379500001	\$189.16	379501004	\$189.16	379501031	\$189.16
379500002	\$189.16	379501005	\$189.16	379501032	\$189.16
379500003	\$189.16	379501006	\$189.16	379501033	\$189.16
Totals		Parcels 81	Levy \$15,321.96		

Assessment Roll

68-8772 - LMD 1 - Zone 22

Fiscal Year 2019-20



APN	Levy	APN	Levy	APN	Levy
377160049	\$6,458.68				
Totals		Parcels	1	Levy	\$6,458.68

Assessment Roll

68-8773 - LMD 1 - Zone 23

Fiscal Year 2019-20



APN	Levy	APN	Levy	APN	Levy
363164001	\$1,116.32	363164003	\$1,116.32	363164005	\$1,116.32
363164002	\$1,116.32	363164004	\$1,116.32		
Totals		Parcels	5	Levy	\$5,581.60

Assessment Roll

68-8774 - LMD 1 - Zone 24

Fiscal Year 2019-20



APN	Levy	APN	Levy	APN	Levy
394200001	\$62.80	394202019	\$62.80	394210023	\$62.80
394200002	\$62.80	394202020	\$62.80	394210024	\$62.80
394200003	\$62.80	394202021	\$62.80	394210025	\$62.80
394200004	\$62.80	394202022	\$62.80	394210026	\$62.80
394200005	\$62.80	394202023	\$62.80	394210027	\$62.80
394200006	\$62.80	394202024	\$62.80	394210028	\$62.80
394200007	\$62.80	394202025	\$62.80	394210029	\$62.80
394200008	\$62.80	394202026	\$62.80	394210030	\$62.80
394201001	\$62.80	394202027	\$62.80	394210031	\$62.80
394201002	\$62.80	394202028	\$62.80	394210032	\$62.80
394201003	\$62.80	394202029	\$62.80	394210033	\$62.80
394201004	\$62.80	394202030	\$62.80	394210034	\$62.80
394201005	\$62.80	394202031	\$62.80	394210035	\$62.80
394201006	\$62.80	394202032	\$62.80	394210036	\$62.80
394201007	\$62.80	394210001	\$62.80	394211001	\$62.80
394201008	\$62.80	394210002	\$62.80	394211002	\$62.80
394201009	\$62.80	394210003	\$62.80	394211003	\$62.80
394201010	\$62.80	394210004	\$62.80	394211004	\$62.80
394202001	\$62.80	394210005	\$62.80	394211005	\$62.80
394202002	\$62.80	394210006	\$62.80	394211006	\$62.80
394202003	\$62.80	394210007	\$62.80	394211007	\$62.80
394202004	\$62.80	394210008	\$62.80	394211008	\$62.80
394202005	\$62.80	394210009	\$62.80	394211009	\$62.80
394202006	\$62.80	394210010	\$62.80	394211011	\$62.80
394202007	\$62.80	394210011	\$62.80	394211012	\$62.80
394202008	\$62.80	394210012	\$62.80	394211013	\$62.80
394202009	\$62.80	394210013	\$62.80	394211014	\$62.80
394202010	\$62.80	394210014	\$62.80	394211015	\$62.80
394202011	\$62.80	394210015	\$62.80	394211016	\$62.80
394202012	\$62.80	394210016	\$62.80	394211017	\$62.80
394202013	\$62.80	394210017	\$62.80	394211018	\$62.80
394202014	\$62.80	394210018	\$62.80	394211019	\$62.80
394202015	\$62.80	394210019	\$62.80	394211020	\$62.80
394202016	\$62.80	394210020	\$62.80	394211021	\$62.80
394202017	\$62.80	394210021	\$62.80	394211022	\$62.80
394202018	\$62.80	394210022	\$62.80		
Totals		Parcels 107		Levy \$6,719.60	

Assessment Roll

68-8775 - LMD 1 - Zone 25

Fiscal Year 2019-20



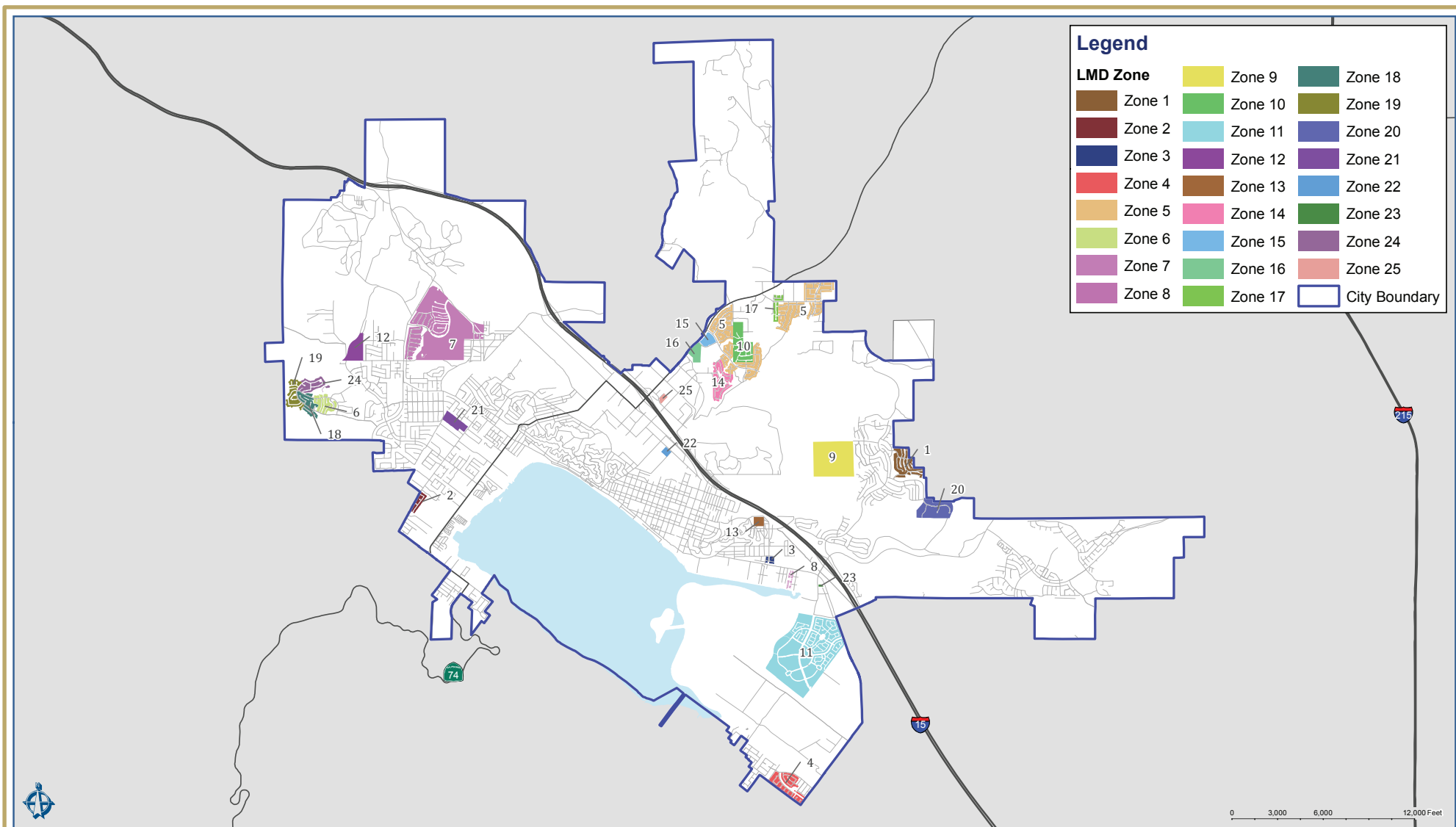
APN	Levy	APN	Levy	APN	Levy
377090042	\$1,661.22				
Totals		Parcels	1	Levy	\$1,661.22

APPENDIX B

District Diagram



SPICER CONSULTING
G R O U P



LANDSCAPE MAINTENANCE DISTRICT NO. 1
 DISTRICT DIAGRAM
 CITY OF LAKE ELSINORE



SPICER CONSULTING
GROUP