

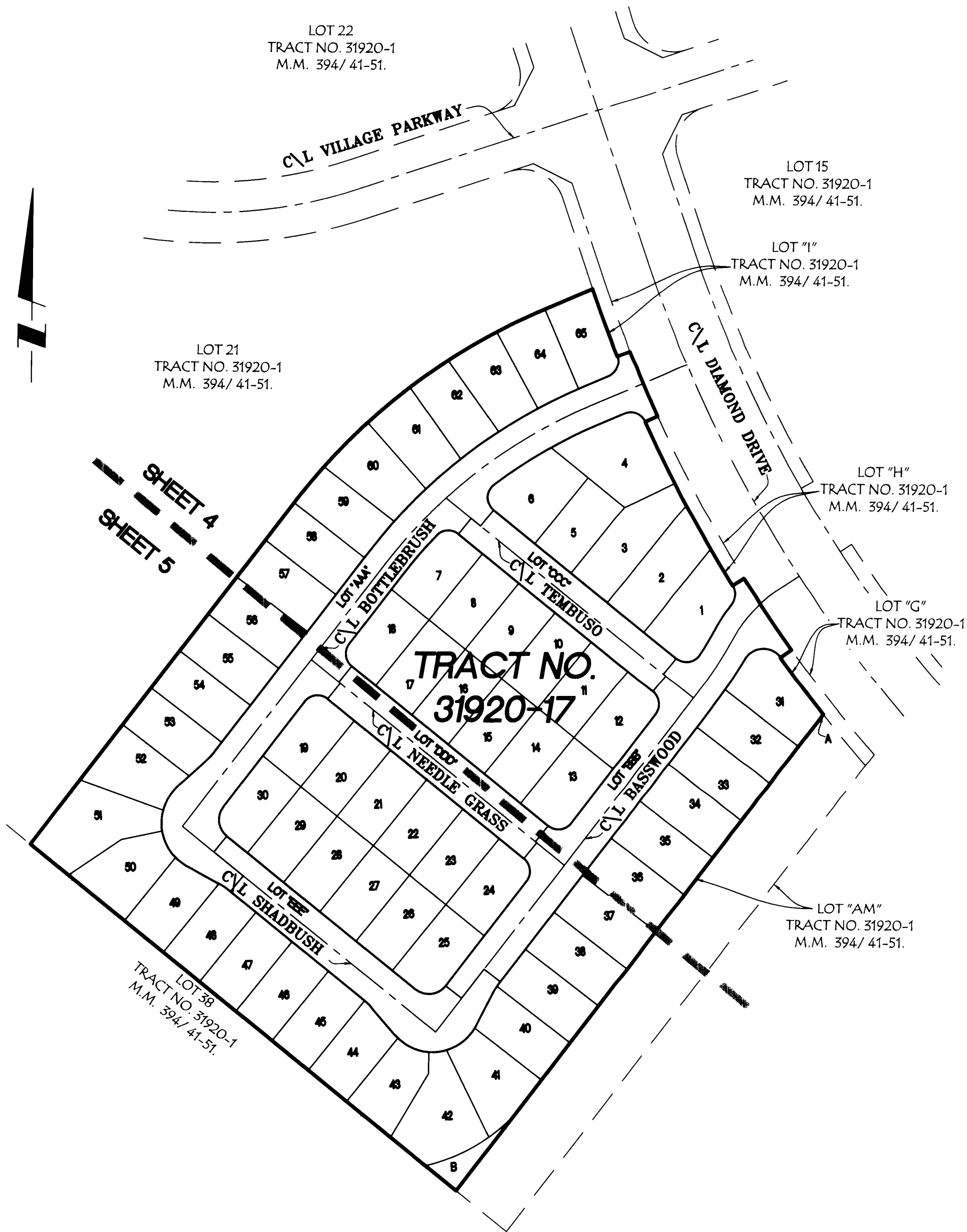
TRACT NO. 31920-17

BEING A SUBDIVISION OF LOT 20 OF TRACT NO. 31920-1, PER MAP FILED IN BOOK 394 OF MAPS, AT PAGES 41 THROUGH 51, INCLUSIVE, RECORDS OF RIVERSIDE COUNTY, CALIFORNIA.

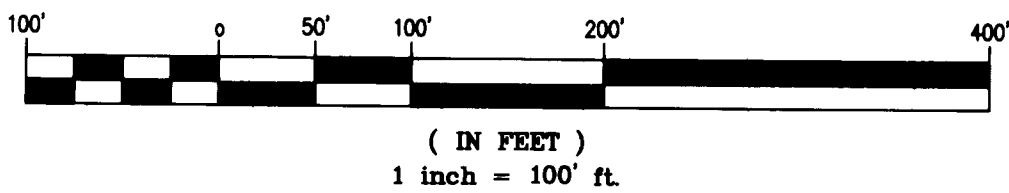
WILSON MIKAMI CORPORATION

RICHARD A. TETREULT P.L.S. 7418

INDEX SHEET



GRAPHIC SCALE



EASEMENT NOTES:

- ① INDICATES A 4' WIDE P.U.E. DEDICATED HEREON TO THE CITY OF LAKE ELSINORE.
- Ⓐ INDICATES AN EASEMENT TO THE CITY OF LAKE ELSINORE, FOR STORM DRAIN PURPOSES, RECORDED AUGUST 26, 2015, AS DOCUMENT NO. 2015-0380650, OF OFFICIAL RECORDS.