

City 78/74

## BOUNDARIES - POTENTIAL ANNEXATION AREA

### COMMUNITY FACILITIES DISTRICT NO. 2015-2 (MAINTENANCE SERVICES) CITY OF LAKE ELSINORE COUNTY OF RIVERSIDE, STATE OF CALIFORNIA

I HEREBY CERTIFY THAT THE WITHIN MAP SHOWING THE PROPOSED BOUNDARIES OF THE POTENTIAL ANNEXATION AREA OF COMMUNITY FACILITIES DISTRICT NO. 2015-2 (MAINTENANCE SERVICES), CITY OF LAKE ELSINORE, COUNTY OF RIVERSIDE, STATE OF CALIFORNIA, WAS APPROVED BY THE CITY COUNCIL OF THE CITY OF MENIFEE AT A REGULAR MEETING THEREOF, HELD ON 28<sup>TH</sup> DAY OF August, 2015, BY ITS RESOLUTION NO. 2015-066.

Diana Giron, Acting City Clerk  
CITY CLERK  
CITY OF LAKE ELSINORE

FILED IN THE OFFICE OF THE CITY CLERK, CITY OF LAKE ELSINORE THIS 14<sup>TH</sup> DAY OF August, 2015.

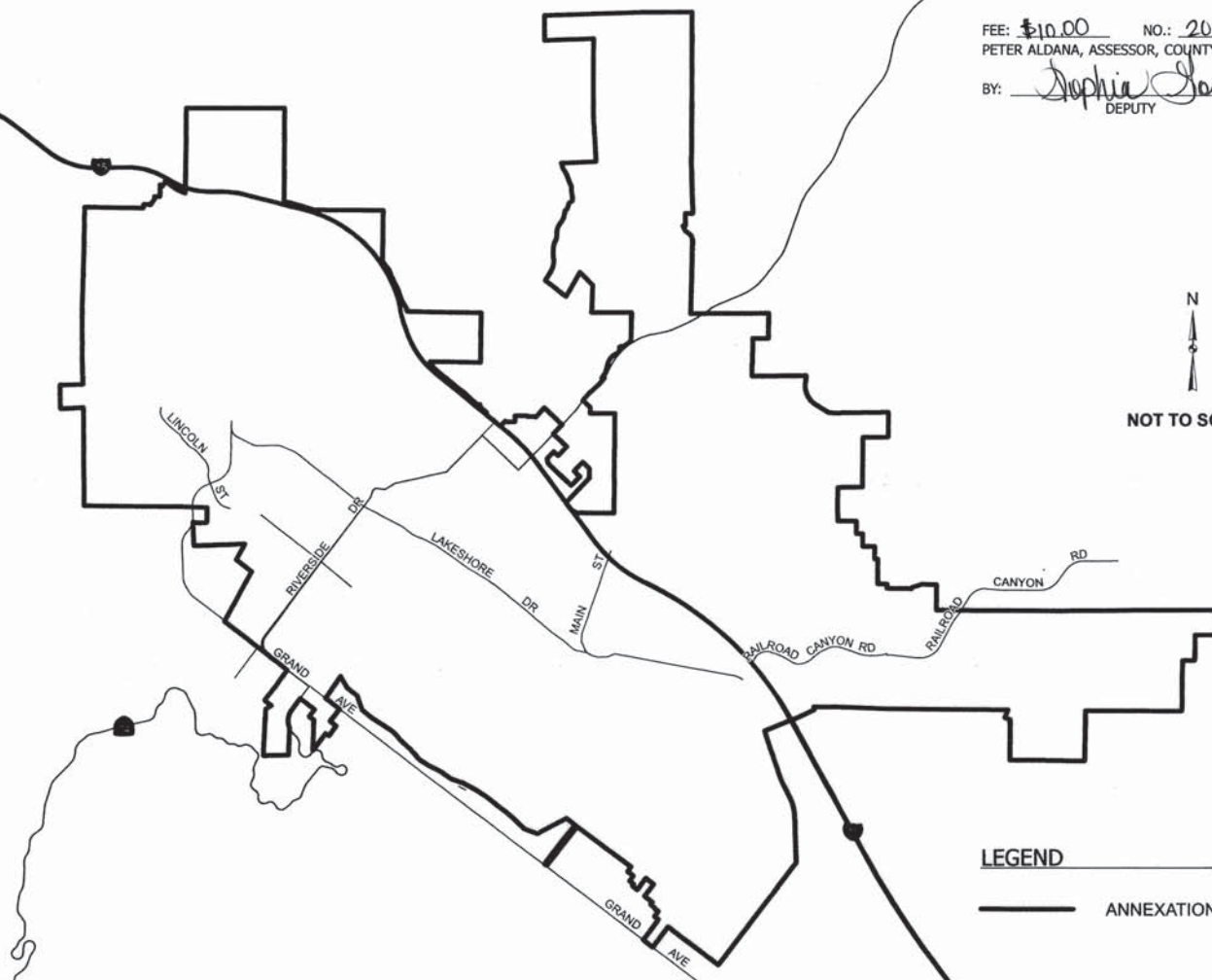
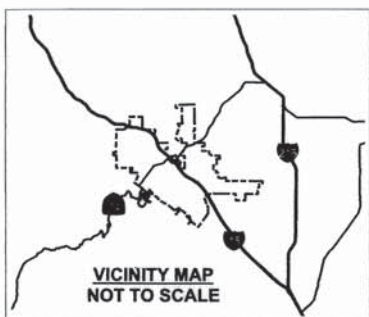
Diana Giron, Acting City Clerk  
CITY CLERK  
CITY OF LAKE ELSINORE

RECORDED THIS 19<sup>TH</sup> DAY OF August, 2015  
AT THE HOUR OF 12:45 O'CLOCK P.M. IN BOOK 78  
PAGE 74 OF MAPS OF ASSESSMENT AND COMMUNITY  
FACILITIES DISTRICTS IN THE OFFICE OF THE COUNTY  
RECORDER, IN THE COUNTY OF RIVERSIDE, STATE OF  
CALIFORNIA.

FEE: \$10.00 NO.: 2015-0369598  
PETER ALDANA, ASSESSOR, COUNTY CLERK, RECORDER

BY: Sophia Gomez  
DEPUTY

N  
↑  
NOT TO SCALE



LEGEND  
— ANNEXATION AREA BOUNDARY