

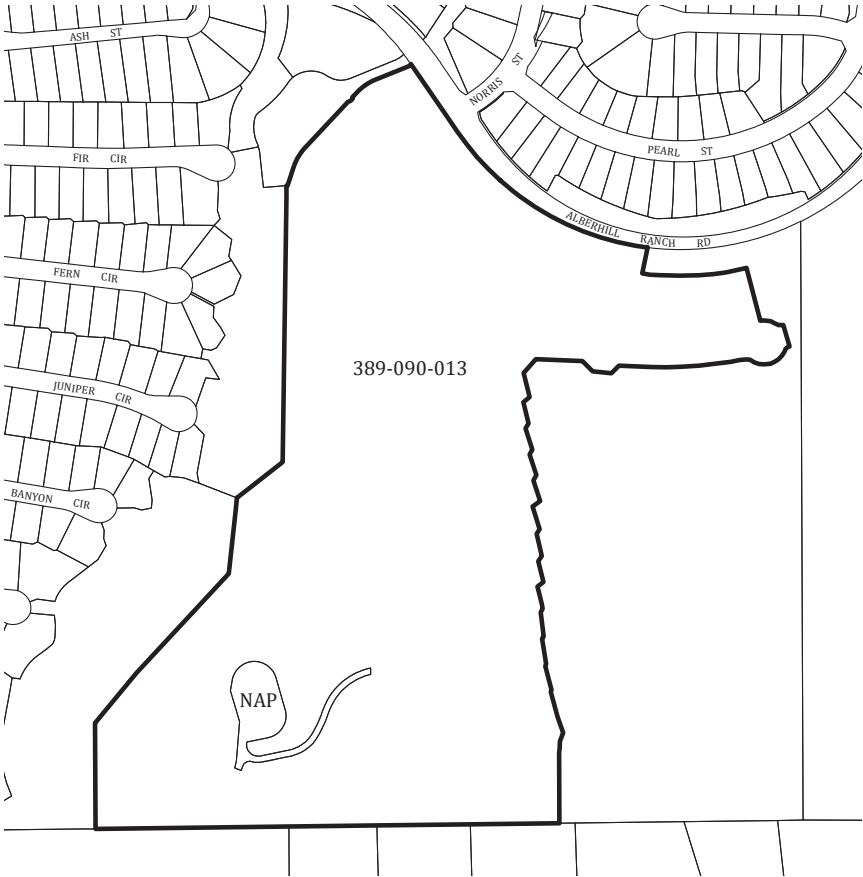
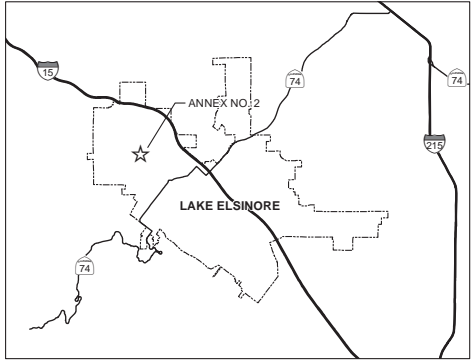
**ANNEXATION MAP NO. 2**  
**COMMUNITY FACILITIES DISTRICT NO. 2015-1**  
**(SAFETY SERVICES)**  
**CITY OF LAKE ELSINORE,**  
**COUNTY OF RIVERSIDE, STATE OF CALIFORNIA**

THIS MAP SHOWS THE BOUNDARIES OF AREAS TO BE ANNEXED TO COMMUNITY FACILITIES DISTRICT NO. 2015-1 (SAFETY SERVICES), OF THE CITY OF LAKE ELSINORE, COUNTY OF RIVERSIDE, STATE OF CALIFORNIA.

THE BOUNDARIES OF WHICH COMMUNITY FACILITIES DISTRICT ARE SHOWN AND DESCRIBED ON THE MAP THEREOF WHICH WAS PREVIOUSLY RECORDED ON MARCH 14, 2016 IN BOOK 79 OF MAPS OF ASSESSMENT AND COMMUNITY FACILITIES DISTRICT AT PAGES 45-46 AND AS INSTRUMENT NO. 2016-00978338 IN THE OFFICE OF THE COUNTY RECORDER OF THE COUNTY OF RIVERSIDE, STATE OF CALIFORNIA.

I HEREBY CERTIFY THAT THE WITHIN MAP SHOWING PROPOSED BOUNDARIES OF COMMUNITY FACILITIES DISTRICT NO. 2015-1 (SAFETY SERVICES), CITY OF LAKE ELSINORE, COUNTY OF RIVERSIDE, STATE OF CALIFORNIA, WAS APPROVED BY THE CITY COUNCIL OF THE CITY OF LAKE ELSINORE AT A REGULAR MEETING THEREOF, HELD ON \_\_\_\_ DAY OF \_\_\_\_, 20\_\_\_\_, BY RESOLUTION NO. \_\_\_\_\_

\_\_\_\_\_  
CITY CLERK  
CITY OF LAKE ELSINORE



RECORDED THIS \_\_\_\_ DAY OF \_\_\_\_, 20\_\_\_\_ AT  
THE HOUR OF \_\_\_\_ O'CLOCK \_\_M IN BOOK \_\_\_\_  
PAGE \_\_\_\_ OF MAPS OF ASSESSMENT AND COMMUNITY  
FACILITIES DISTRICTS IN THE OFFICE OF THE COUNTY  
RECORDER, IN THE COUNTY OF RIVERSIDE, STATE OF  
CALIFORNIA.

FEE: \_\_\_\_\_ NO.: \_\_\_\_\_  
PETER ALDANA, ASSESSOR, COUNTY CLERK, RECORDER

BY: \_\_\_\_\_  
DEPUTY

- LEGEND**
- ANNEXATION AREA BOUNDARY
  - PARCEL LINE
  - XXX-XXX-XXX ASSESSOR PARCEL NUMBER
  - NAP NOT A PART



THIS ANNEXATION MAP CORRECTLY SHOWS THE LOT OR PARCEL OF LAND INCLUDED WITHIN THE BOUNDARIES OF THE COMMUNITY FACILITIES DISTRICT. FOR DETAILS CONCERNING THE LINES AND DIMENSIONS OF LOTS OR PARCEL REFER TO THE COUNTY ASSESSOR MAPS FOR FISCAL YEAR 2016-17.

